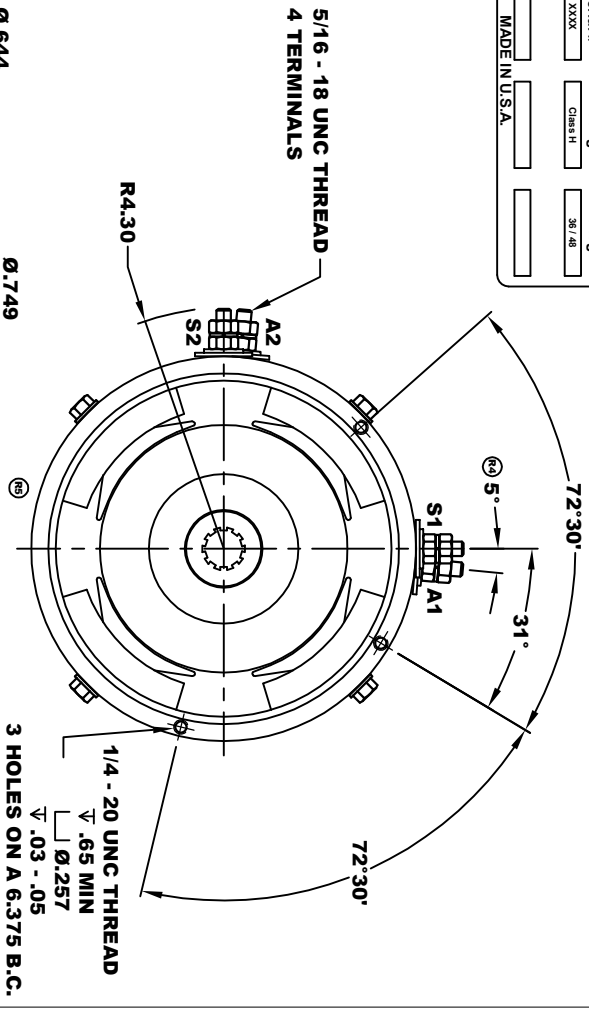
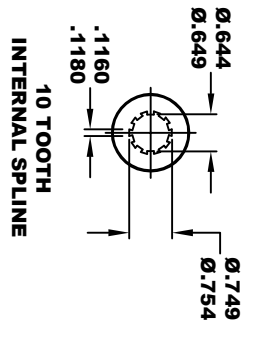
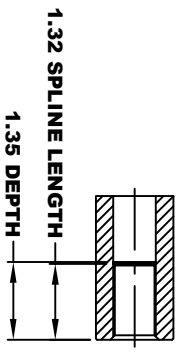
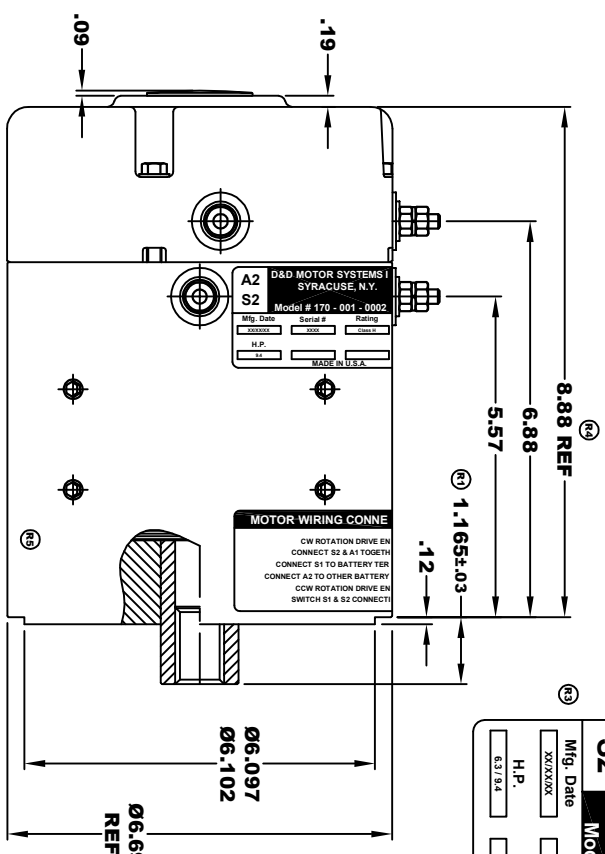


**TORQUE SPECIFICATION FOR
POWER CABLE SECURING TOP NUTS
5/16-18 UNC - 110 IN / LBS MAX**

D&D MOTOR SYSTEMS INC.			
SYRACUSE N.Y.			
A2	A1	S2	S1
Model # 170 - 001 - 0002			
Mfg. Date	Serial #	Rating	Voltage
XX/XX/XX	XXX	CHRS H	38 / 48
H.P.			
6.3 / 8.4			
MADE IN U.S.A.			

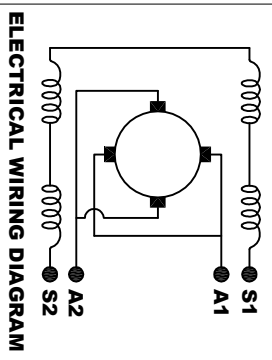


**MOTOR WEIGHT 46 LBS
CLASS "H" INSULATION
PERFORMANCE SPEC: 1**

D & D MOTOR SYSTEMS INC

MOTOR OUTLINE

SIZE	DRAWN DATE	RELEASE DATE	DWG NO. / PART NO.	REV
B	12-17-01	1-15-02	170 - 001 - 0002	R5
SCALE	STF	DRAWN BY	MJG	ES-3
				REV DATE
				5-18-05



MOTOR WIRING CONNECTIONS:
CW ROTATION DRIVE END
 CONNECT S2 & A1 TOGETHER
 CONNECT S1 TO BATTERY TERMINAL
CCW ROTATION DRIVE END
 CONNECT A2 TO OTHER BATTERY TERMINAL
 SWITCH S1 & S2 CONNECTIONS

THIS PRINT IS THE PROPERTY OF D&D MOTOR SYSTEMS INC.
 DO NOT SCALE
 WORK TO DIMENSIONS
 TOLERANCES UNLESS OTHERWISE SPECIFIED ARE AS FOLLOWS
 .XX- .01
 .XXX- .005
 .XX ROUGH CASTING .03
 HOLES .001 / +.006
 ANGLES -0°30'