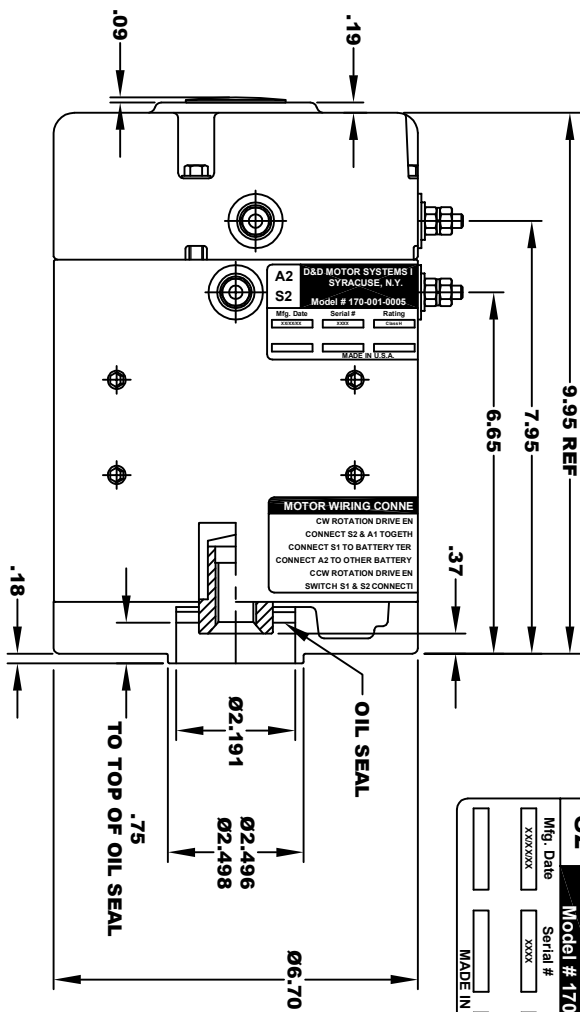
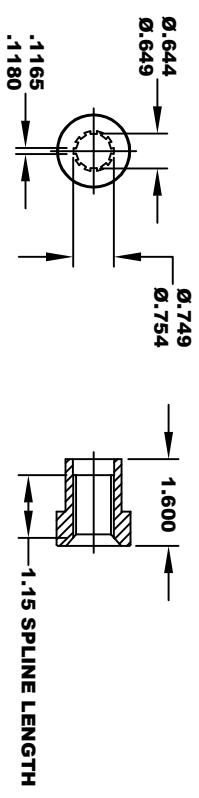


A2		D&D MOTOR SYSTEMS INC.		A1	
S2		SYRACUSE N.Y.		S1	
Model # 170-001-0005					
Mfg. Date	Serial #	Rating	Voltage		
XXXXXX	XXXX	GLASS H	24V - 48V		
MADE IN U.S.A.					

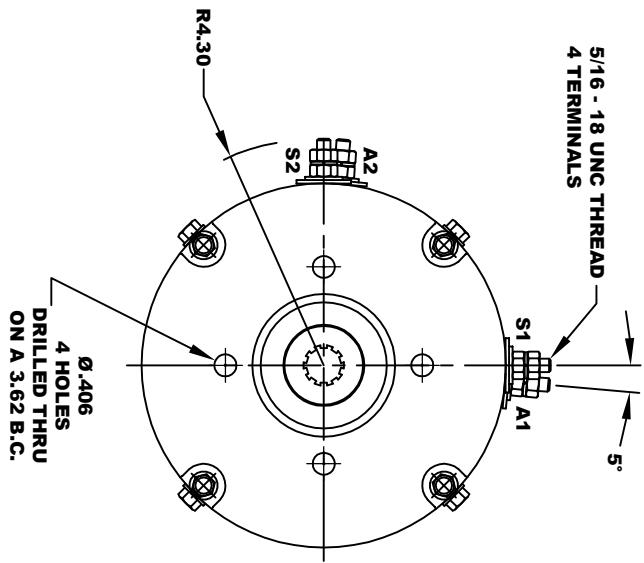


**10 TOOTH
INTERNAL SPLINE
HARDNESS OF SPLINE
TO BE R/C 46 - 53 (.02 DEPTH MIN)**

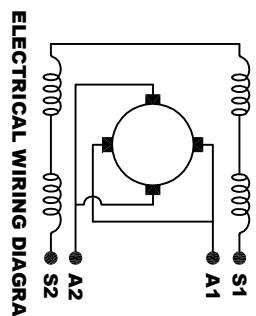


**MOTOR WEIGHT: 48 LBS
CLASS "H" INSULATION
PERFORMANCE SPEC: 1**

**TORQUE SPECIFICATION FOR
POWER CABLE SECURING TOP NUTS
5/16-18 UNC - 110 IN / LBS MAX**



**MOTOR WIRING CONNECTIONS:
CW ROTATION DRIVE END
CONNECT S2 & A1 TOGETHER
CONNECT S1 TO BATTERY TERMINAL
CCW ROTATION DRIVE END
CONNECT A2 TO OTHER BATTERY TERMINAL
CONNECT S1 & S2 CONNECTIONS**



THIS PRINT IS THE PROPERTY OF D&D MOTOR SYSTEMS INC.
DO NOT SCALE
WORK TO DIMENSIONS
TOLERANCES UNLESS OTHERWISE SPECIFIED ARE AS FOLLOWS
-XXX----- .01
-XXX----- .005
-XX ROUGH CASTING ----- .03
HOLES ----- .001 / +.006
ANGLES ----- 0°30"

D & D MOTOR SYSTEMS INC			
MOTOR OUTLINE			
SIZE	DRAWN DATE	RELEASE DATE	DWG NO. / PART NO.
B	9-11-02	2-15-24	170-001-0005
SCALE	DRAWN BY	REV	DATE
STF	MJG	ES-36	