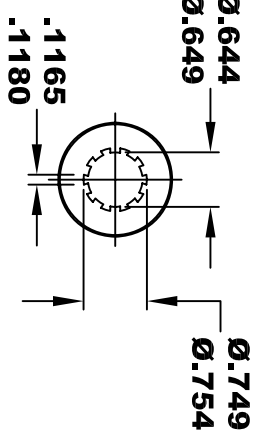
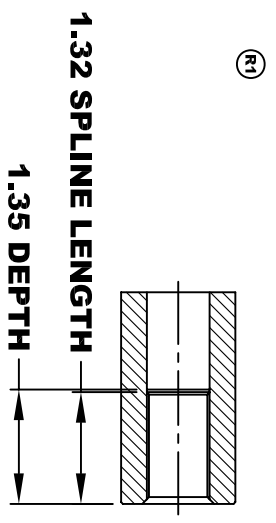
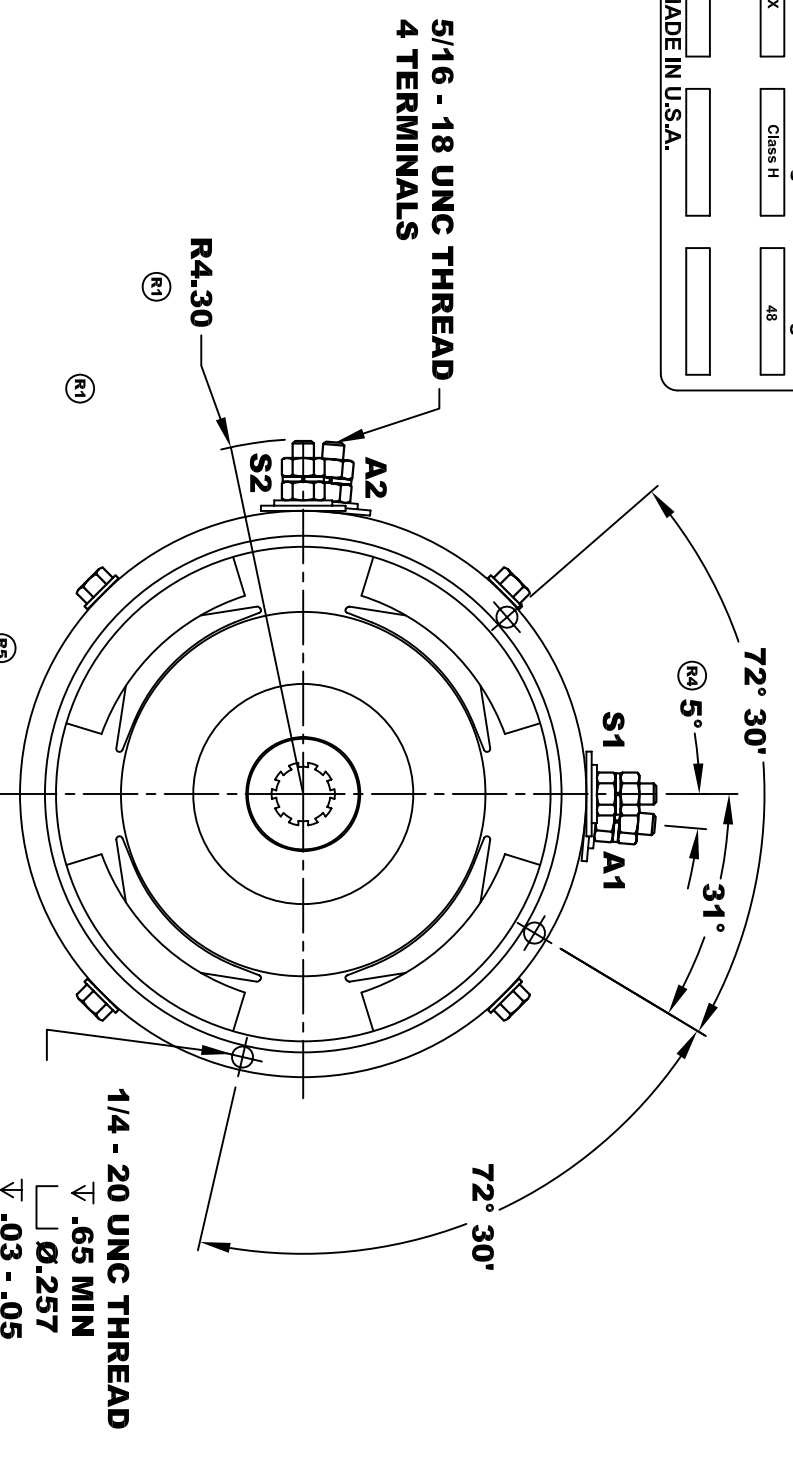
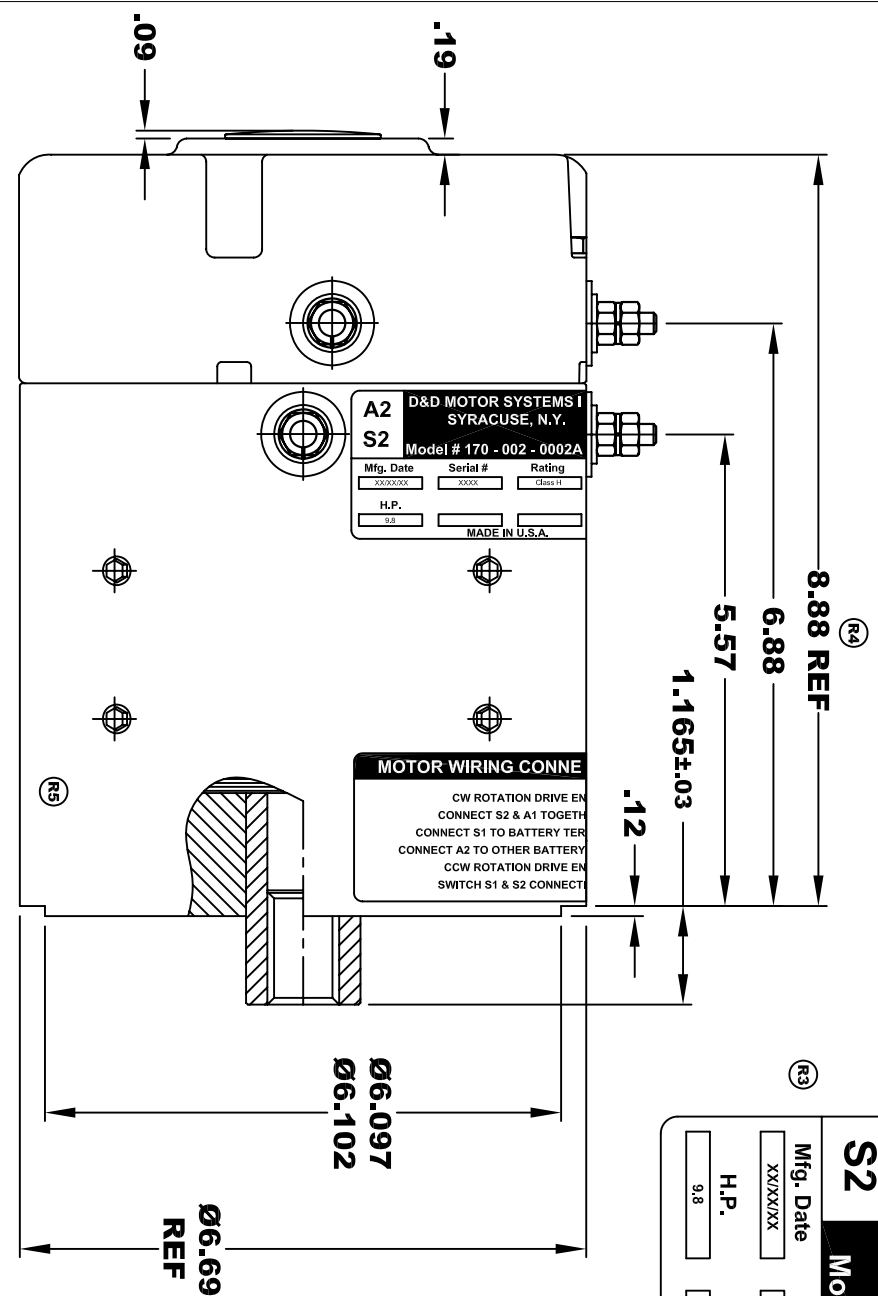


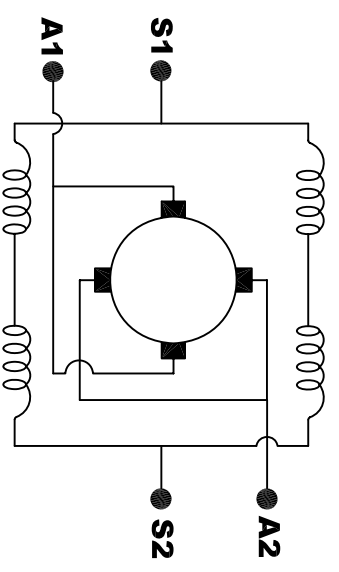
A2	D&D MOTOR SYSTEMS INC.			A1
S2	SYRACUSE, N.Y.			S1
Model # 170 - 002 - 0002A				
Mfg. Date	Serial #	Rating	Voltage	
XX/XX/XX	XXXX	Class H	48	
H.P.	MADE IN U.S.A.			
9.8				

**TORQUE SPECIFICATION FOR
POWER CABLE SECURING TOP NUTS
5/16-18 UNC - 110 IN / LBS MAX**



**10 TOOTH
INTERNAL SPLINE**

**MOTOR WEIGHT 46 LBS
CLASS "H" INSULATION
PERFORMANCE SPEC: 2**



ELECTRICAL WIRING DIAGRAM

**MOTOR WIRING CONNECTIONS:
CW ROTATION DRIVE END
CONNECT S2 & A1 TOGETHER
CONNECT S1 TO BATTERY TERMINAL
CONNECT A2 TO OTHER BATTERY TERMINAL
CCW ROTATION DRIVE END
SWITCH S1 & S2 CONNECTIONS**

THIS PRINT IS THE PROPERTY OF D&D MOTOR SYSTEMS INC.
DO NOT SCALE
WORK TO DIMENSIONS
TOLERANCES UNLESS OTHERWISE SPECIFIED ARE AS FOLLOWS

.XXX	.005
.XX	.01
.XX ROUGH CASTING	.03
HOLES	-.001 / +.006
ANGLES	0°30"

D & D MOTOR SYSTEMS INC		MOTOR OUTLINE	
SIZE	DRAWN DATE	RELEASE DATE	DWG NO. / PART NO.
B	12-3-01	4-8-02	170 - 002 - 0002A
SCALE	STF	DRAWN BY	REV DATE
		MJG	ES-6A 5-18-05