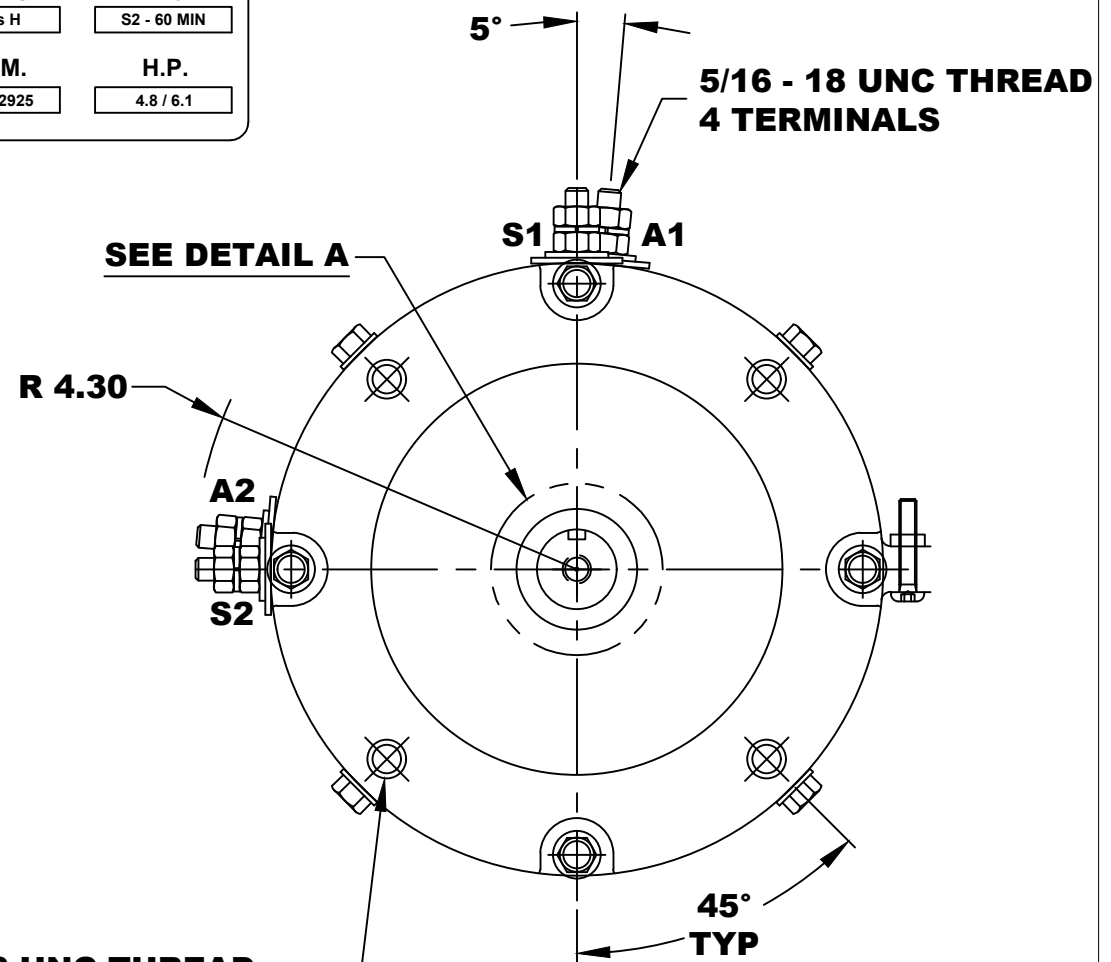
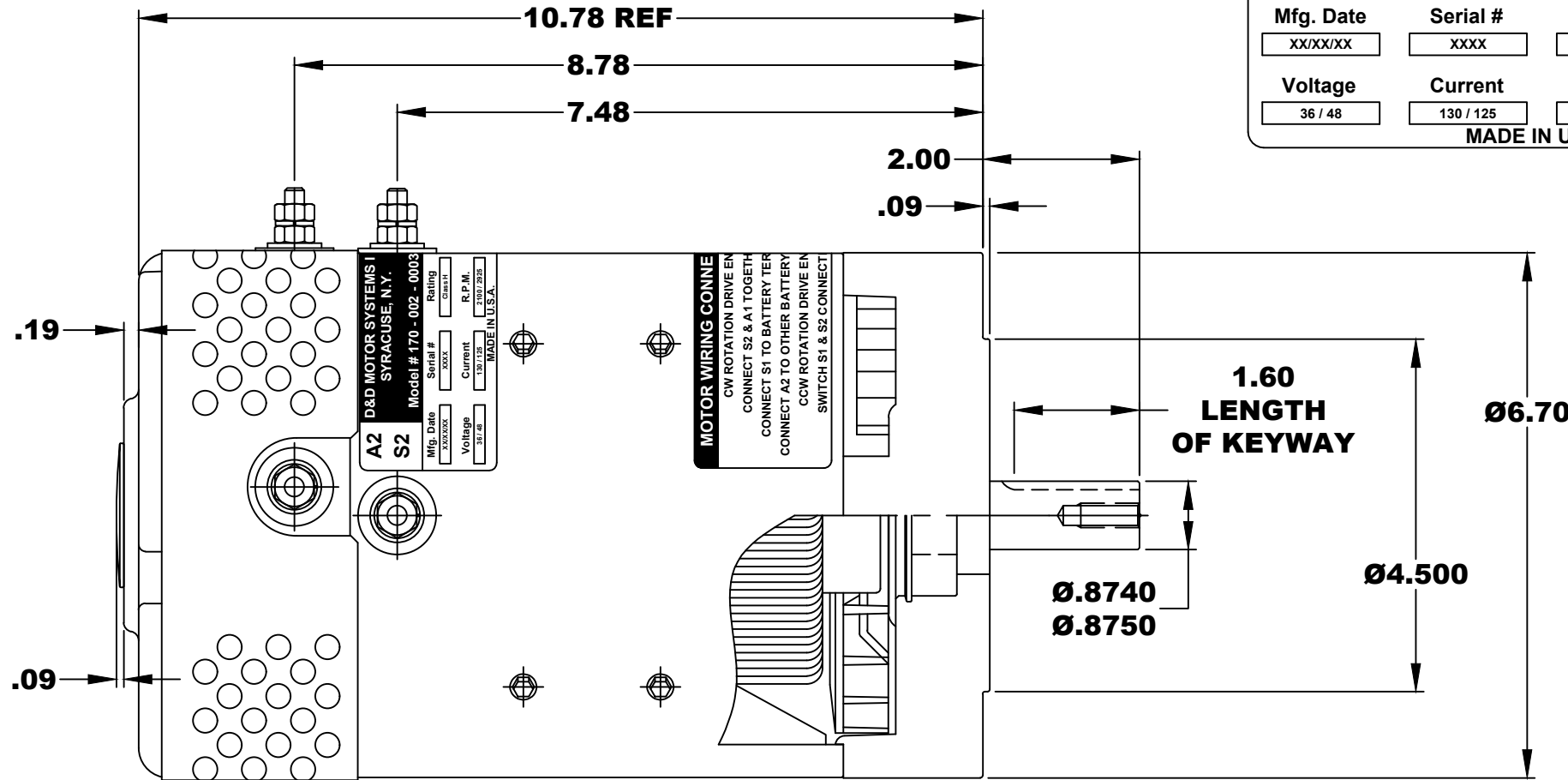
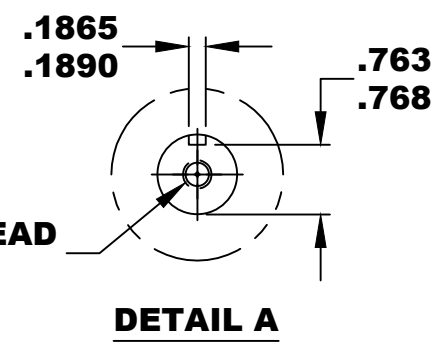


A2	D&D MOTOR SYSTEMS INC.		A1
S2	SYRACUSE N.Y.		S1
Model # 170 - 002 - 0003			
Mfg. Date	Serial #	Rating	Duty
XX/XX/XX	XXXX	Class H	S2 - 60 MIN
Voltage	Current	R.P.M.	H.P.
36 / 48	130 / 125	2100 / 2925	4.8 / 6.1
MADE IN U.S.A.			

**TORQUE SPECIFICATION FOR
POWER CABLE SECURING TOP NUTS
5/16-18 UNC - 110 IN / LBS MAX**

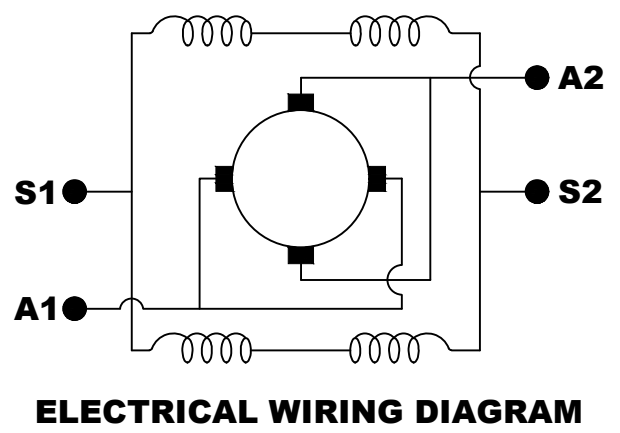


**3/8 - 16 UNC THREAD
▽ .65 MINIMUM
.03 -.05 x 45° CHAMFER
4 PLACES, ON A Ø5.875 B. C.**



**5/16 x 18 UNC THREAD
▽ .75**

**MOTOR WEIGHT: 50 LBS
CLASS "H" INSULATION
PERFORMANCE SPEC: 2 / K-254**



**MOTOR WIRING CONNECTIONS:
CW ROTATION DRIVE END
CONNECT S2 & A1 TOGETHER
CONNECT S1 TO BATTERY TERMINAL
CCW ROTATION DRIVE END
SWITCH S1 & S2 CONNECTIONS**

THIS PRINT IS THE PROPERTY OF D&D MOTOR SYSTEMS INC.

DO NOT SCALE
WORK TO DIMENSIONS
TOLERANCES UNLESS OTHERWISE SPECIFIED ARE AS FOLLOWS

.XX	.01
.XXX	.005
.XX ROUGH CASTING	.03
HOLES	-.001 / +.006
ANGLES	0°30"

D & D MOTOR SYSTEMS INC				
MOTOR OUTLINE				
SIZE	DRAWN DATE	RELEASE DATE	DWG NO. / PART NO.	REV
B	5-23-02	9-16-21	170 - 002 - 0003	
SCALE	STF	DRAWN BY	ES-22-2	REV DATE