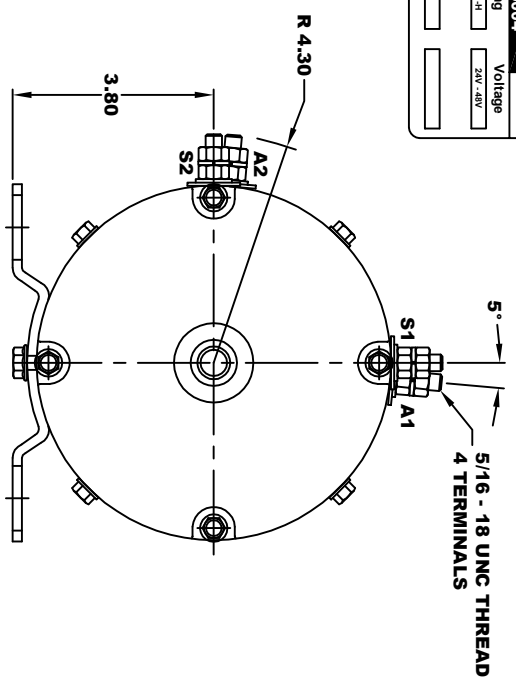
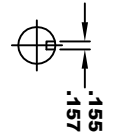
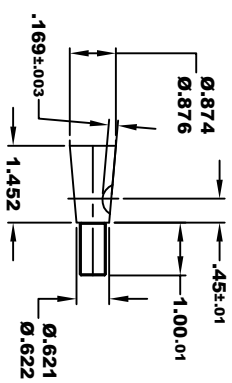
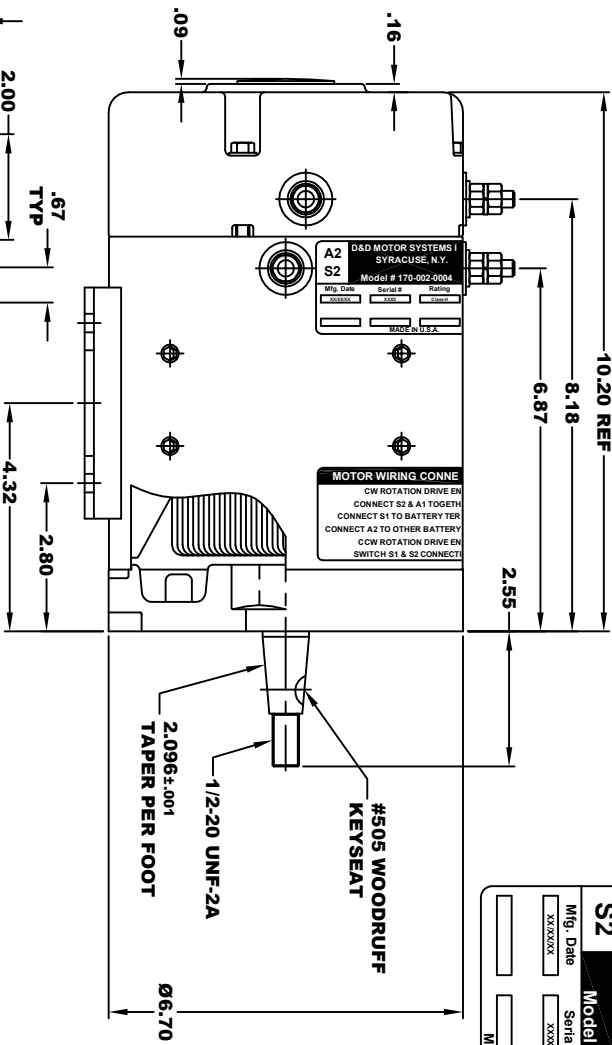
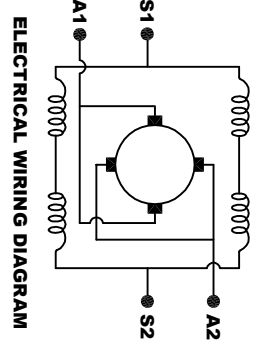


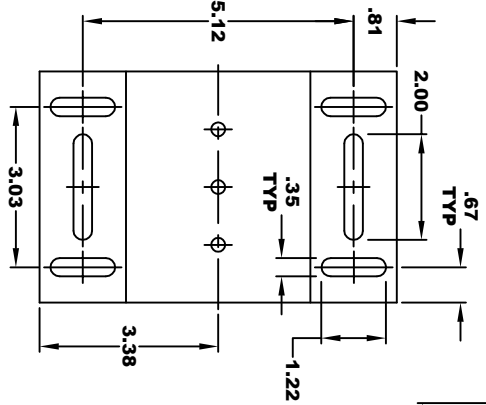
A2		D&D MOTOR SYSTEMS INC.		A1	
S2		SYRACUSE N.Y.		S1	
Model # 170-002-0004					
Mfg. Date	Serial #	Rating	Voltage		
XX/XX/XX	XXXX	CLASS "H"	24V .48V		
MADE IN U.S.A.					



TORQUE SPECIFICATION FOR POWER CABLE SECURING TOP NUTS
5/16-18 UNC - 110 IN / LBS MAX



MOTOR WIRING CONNECTIONS:
CW ROTATION DRIVE END
CONNECT S2 & A1 TOGETHER
CONNECT S1 TO OTHER BATTERY TERMINAL
CCW ROTATION DRIVE END
CONNECT A2 TO OTHER BATTERY TERMINAL
CONNECT S1 & S2 CONNECTIONS



NOTE:
G.E. PART NUMBER: 5BC48JB500
AMD PART NUMBER: A10-4015

MOTOR WEIGHT: 52 LBS
CLASS "H" INSULATION
PERFORMANCE SPEC: 2

THIS PRINT IS THE PROPERTY OF D&D MOTOR SYSTEMS INC.
DO NOT SCALE
WORK TO DIMENSIONS
TOLERANCES UNLESS OTHERWISE SPECIFIED ARE AS FOLLOWS
XX- .01
XXX- .005
XX-ROUGH CASTING- .03
HOLES- .001 / +.006
ANGLES- 0°-30°

D & D MOTOR SYSTEMS INC			
MOTOR OUTLINE			
SIZE	DRAWN DATE	RELEASE DATE	DWG NO. / PART NO.
B	5-25-16	11-06-23	170-002-0004
SCALE	DRAWN BY	MJG	ES-29C-2
			REV DATE