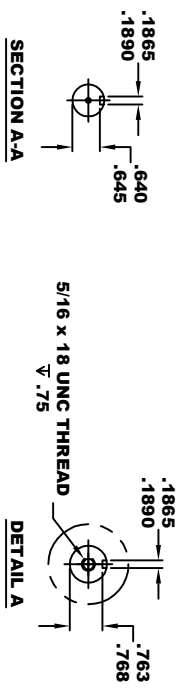
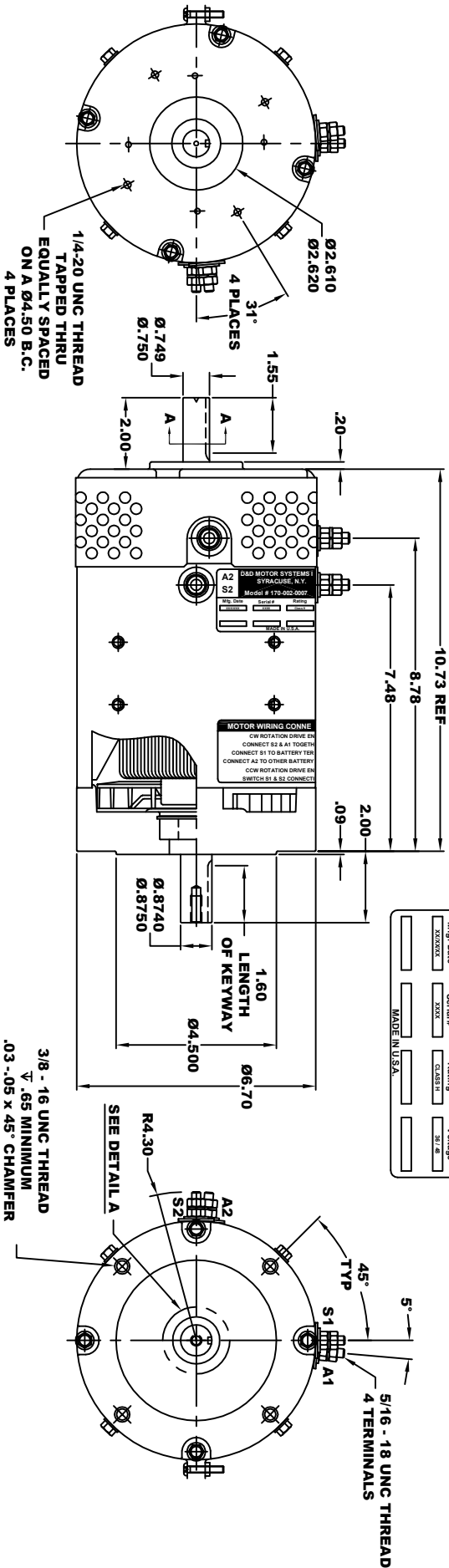


D&D MOTOR SYSTEMS INC. SYRACUSE N.Y.		Model # 170-002-0007	
A2	S2	A1	S1
Mfg. Date	Serial #	Rating	Voltage
XXXXXX	XXXX	CLASS H	31.8
MADE IN U.S.A.			

**TORQUE SPECIFICATION FOR  
POWER CABLE SECURING TOP NUTS**  
5/16-18 UNC - 110 IN / LBS MAX



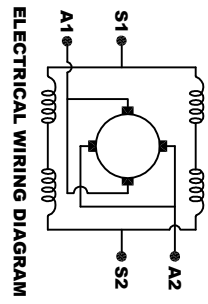
**MOTOR WEIGHT: 51 LBS**  
**CLASS "H" INSULATION**  
**PERFORMANCE SPEC: 2**

**D & D MOTOR SYSTEMS INC**

**MOTOR OUTLINE**

SIZE	DRAWN DATE	RELEASE DATE	DWG NO. / PART NO.	REV
B	11-7-02	6-12-24	170-002-0007	
SCALE	STF	DRAWN BY	MJG	ES-44
				REV DATE

THIS PRINT IS THE PROPERTY OF D&D MOTOR SYSTEMS INC.  
DO NOT SCALE  
WORK TO DIMENSIONS  
TOLERANCES UNLESS OTHERWISE SPECIFIED ARE AS FOLLOWS  
XX----- .01  
XXX----- .005  
XX X ROUGH CASTING ----- .03  
HOLES ----- .001 / +.006  
ANGLES ----- 0°-30°



**MOTOR WIRING CONNECTIONS:**  
**CW ROTATION DRIVE END**  
**CONNECT S2 & A1 TOGETHER**  
**CONNECT S1 TO BATTERY TERMINAL**  
**CCW ROTATION DRIVE END**  
**CONNECT A2 TO OTHER BATTERY TERMINAL**  
**CONNECT S1 & S2 CONNECTIONS**

**ELECTRICAL WIRING DIAGRAM**