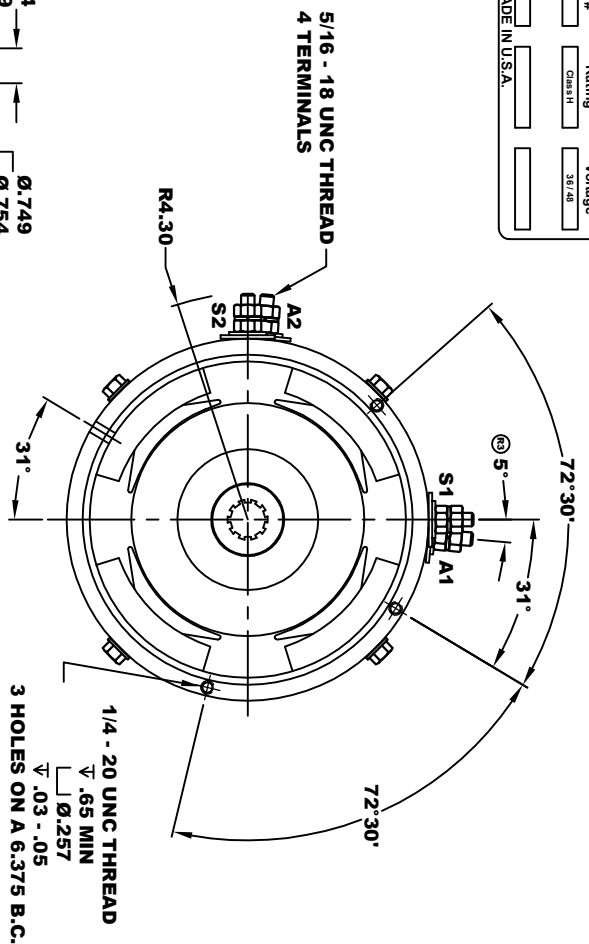
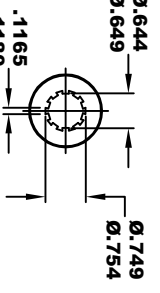
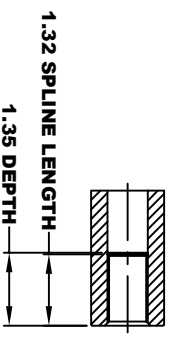
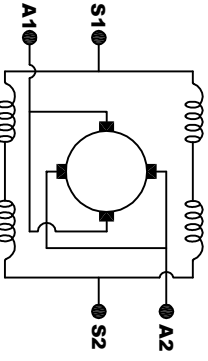


A2	D&D MOTOR SYSTEMS INC.	A1
S2	SYRACUSE N.Y.	S1
Model # 170 - 004 - 0002		
Mfg. Date	Serial #	Rating
XXXXXX	XXXX	Class H
H.P.		Voltage
5.9/102		58 / 48
MADE IN U.S.A.		



**TORQUE SPECIFICATION FOR
POWER CABLE SECURING TOP NUTS
5/16-18 UNC - 110 IN / LBS MAX**

**MOTOR WEIGHT 58 LBS
CLASS "H" INSULATION
PERFORMANCE SPEC: 6**



ELECTRICAL WIRING DIAGRAM

MOTOR WIRING CONNECTIONS:
CW ROTATION DRIVE END
 CONNECT S2 & A1 TOGETHER
 CONNECT S1 TO BATTERY TERMINAL
CCW ROTATION DRIVE END
 CONNECT A2 TO OTHER BATTERY TERMINAL
 SWITCH S1 & S2 CONNECTIONS

THIS PRINT IS THE PROPERTY OF D&D MOTOR SYSTEMS INC.
 DO NOT SCALE
 WORK TO DIMENSIONS
 TOLERANCES UNLESS OTHERWISE SPECIFIED ARE AS FOLLOWS
 .XX .01
 .XXX .005
 .XX ROUNG CASTING .03
 HOLES .001 / +.006
 ANGLES 0°-30°

D & D MOTOR SYSTEMS INC			
MOTOR OUTLINE			
SIZE	DRAWN DATE	RELEASE DATE	DWG NO. / PART NO.
B	2-6-02	2-8-02	170 - 004 - 0002
SCALE	STF	DRAWN BY	REV
		MJG	ES-5A
			12-1-10