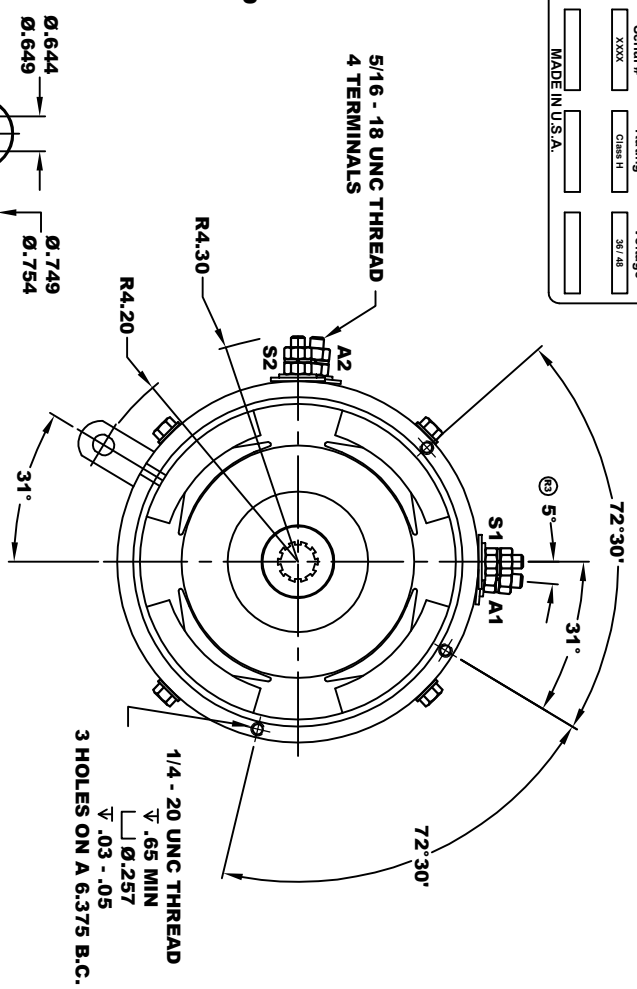
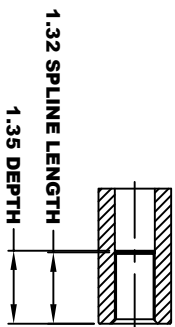
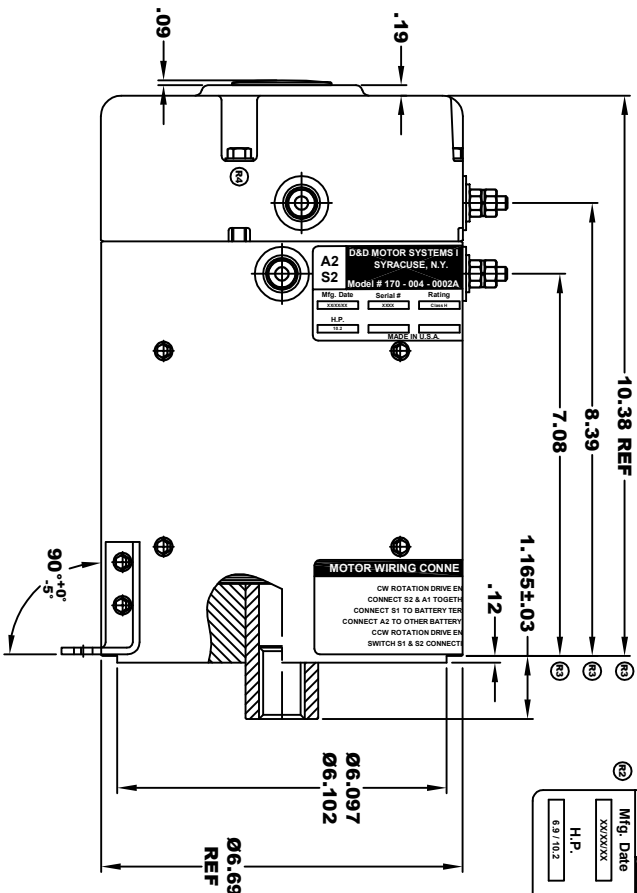
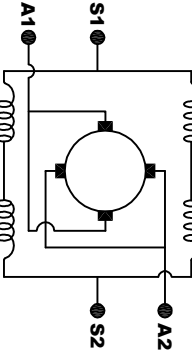


<b>A2</b>	<b>A1</b>		
<b>S2</b>	<b>S1</b>		
D&D MOTOR SYSTEMS INC. SYRACUSE N. Y.			
Model # 170 - 004 - 0002A			
Mfg. Date	Serial #	Rating	Voltage
XXXXXX	XXXX	Class H	38 / 48
H.P.			
6.3 / 10.2			
MADE IN U.S.A.			



**TORQUE SPECIFICATION FOR  
POWER CABLE SECURING TOP NUTS  
5/16-18 UNC - 110 IN / LBS MAX**

**MOTOR WEIGHT 58 LBS  
CLASS "H" INSULATION  
PERFORMANCE SPEC: 6**



**ELECTRICAL WIRING DIAGRAM**

**MOTOR WIRING CONNECTIONS:  
CW ROTATION DRIVE END  
CONNECT S2 & A1 TOGETHER  
CONNECT S1 TO BATTERY TERMINAL  
CONNECT A2 TO OTHER BATTERY TERMINAL  
CCW ROTATION DRIVE END  
SWITCH S1 & S2 CONNECTIONS**

THIS PRINT IS THE PROPERTY OF D&D MOTOR SYSTEMS INC.  
DO NOT SCALE  
WORK TO DIMENSIONS  
TOLERANCES UNLESS OTHERWISE SPECIFIED ARE AS FOLLOWS  
XX----- .01  
XXX----- .005  
XX X ROUGH CASTING ----- .03  
HOLES ----- .001 / +.006  
ANGLES ----- 0°-30°

D & D MOTOR SYSTEMS INC			
<b>MOTOR OUTLINE</b>			
SIZE	DRAWN DATE	RELEASE DATE	DWG NO. / PART NO.
B	5-21-02	5-21-02	170 - 004 - 0002A
SCALE	STF	DRAWN BY	REV DATE
		MJG	12-1-10