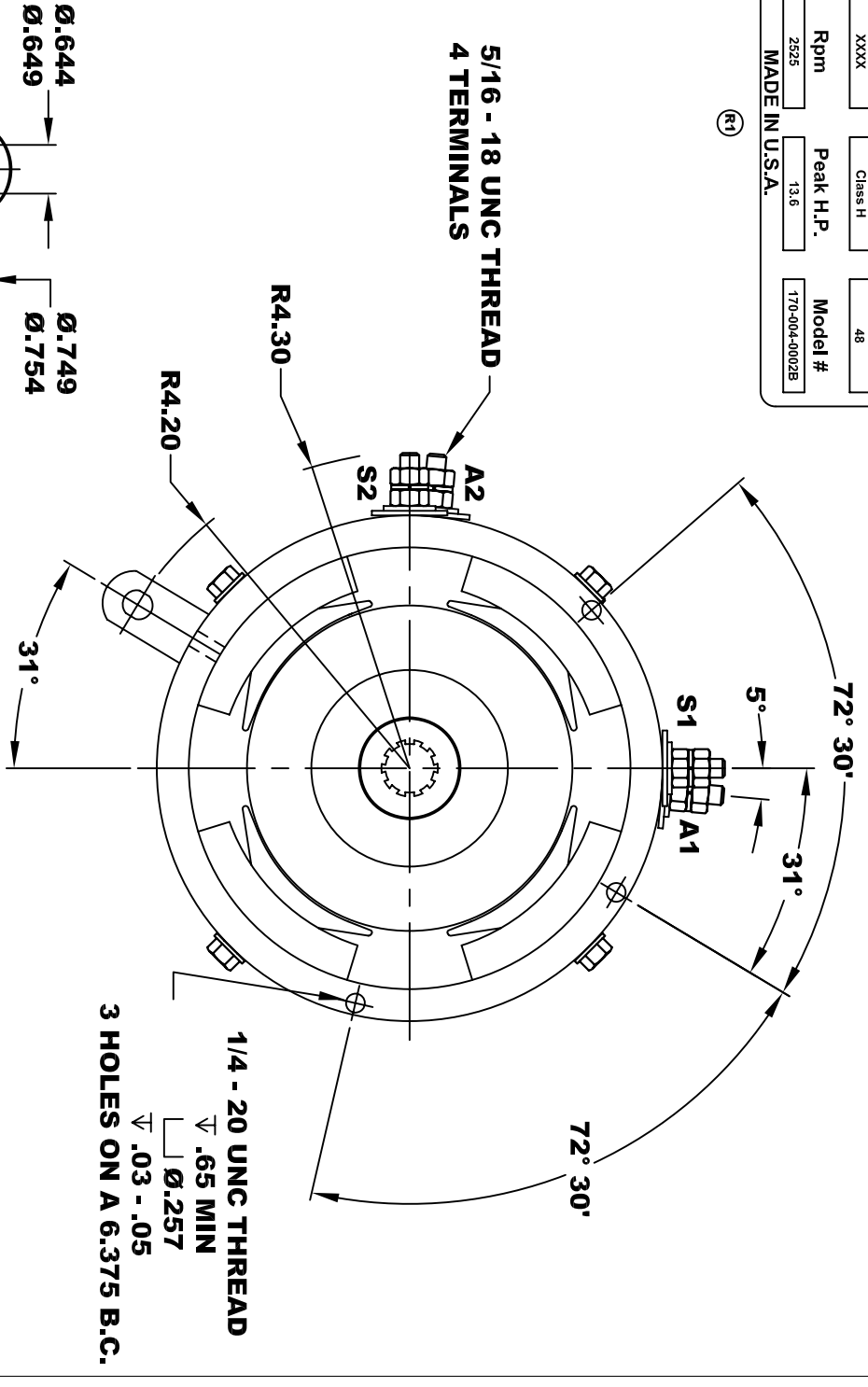
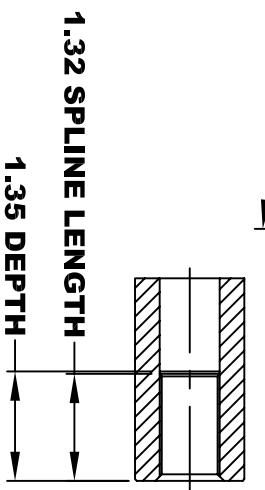
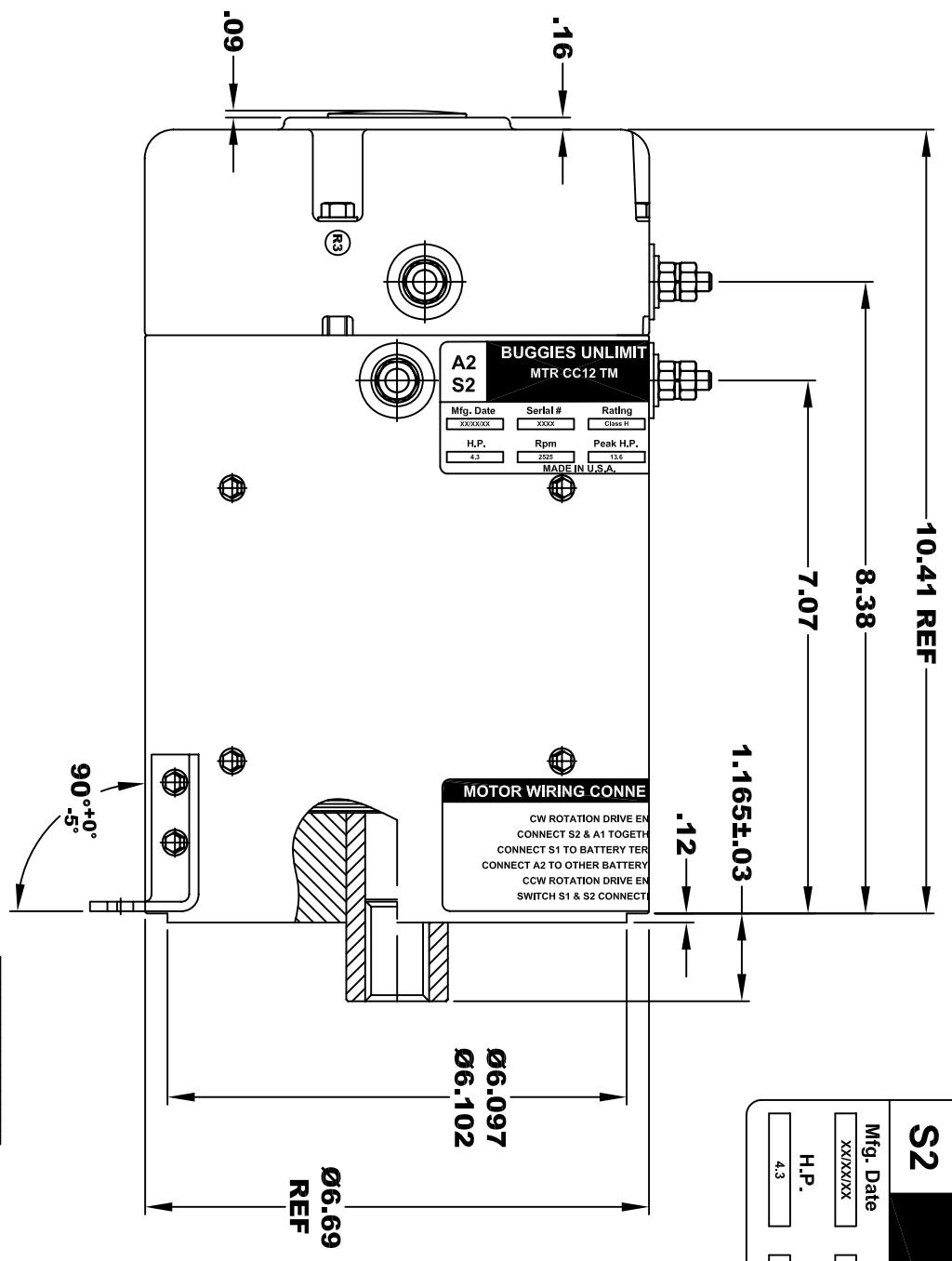


A2		BUGGIES UNLIMITED		A1	
S2		MTR CC12 TM		S1	
Mfg. Date	Serial #	Rating	Voltage		
XXXXXX	XXXX	Class H	48		
H.P.	Rpm	Peak H.P.	Model #		
4.3	2525	13.6	170-004-0002B		
MADE IN U.S.A.					



MOTOR WEIGHT 58 LBS
CLASS "H" INSULATION
PERFORMANCE SPEC: 6

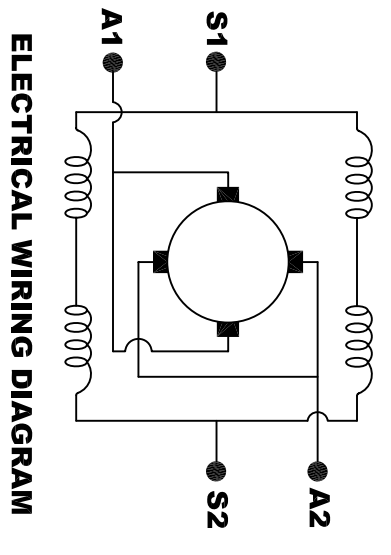
D & D MOTOR SYSTEMS INC

MOTOR OUTLINE

THIS PRINT IS THE PROPERTY OF D&D MOTOR SYSTEMS INC.
DO NOT SCALE
WORK TO DIMENSIONS
TOLERANCES UNLESS OTHERWISE SPECIFIED ARE AS FOLLOWS

.XXX .005
.XX .01
.XX ROUGH CASTING .03
HOLES -.001 / +.006
ANGLES 0°30"

SIZE	DRAWN DATE	RELEASE DATE	DWG NO. / PART NO.	REV
B	10-2-07	10-2-07	170 - 004 - 0002B	R3
SCALE	STF	DRAWN BY	MJG	REV DATE
				12-1-10



MOTOR WIRING CONNECTIONS:
CW ROTATION DRIVE END
CONNECT S2 & A1 TOGETHER
CONNECT S1 TO BATTERY TERMINAL
CONNECT A2 TO OTHER BATTERY TERMINAL
CCW ROTATION DRIVE END
SWITCH S1 & S2 CONNECTIONS