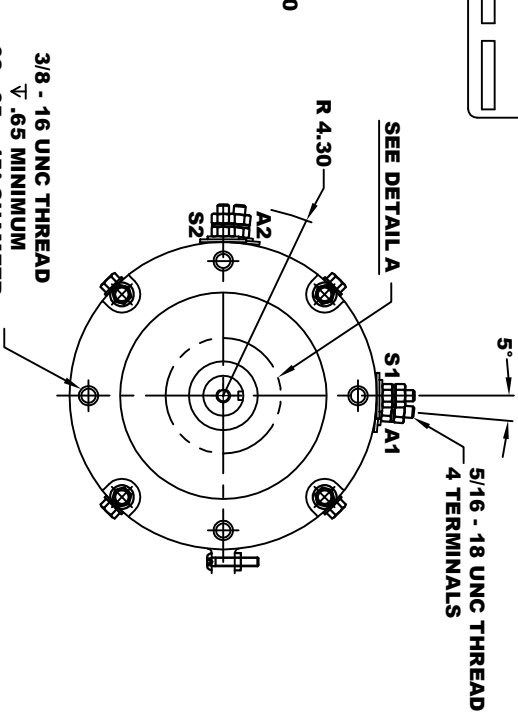
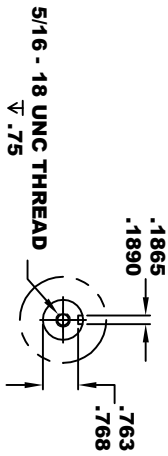
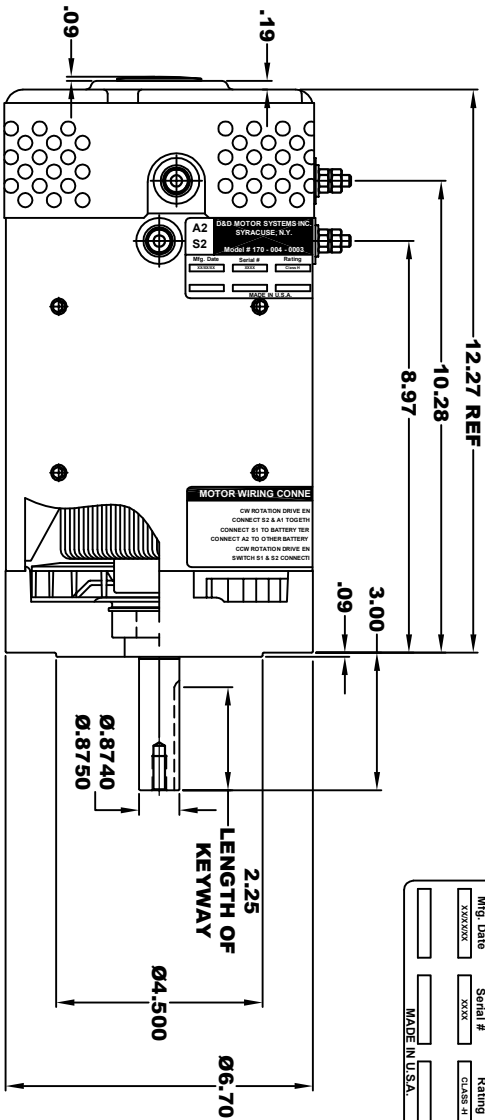


<b>D&amp;D MOTOR SYSTEMS INC.</b>			
SYRACUSE, N.Y.			
<b>A2</b>	<b>A1</b>		
<b>S2</b>	<b>S1</b>		
Model # 170 - 004 - 0003			
Mfg. Date	Serial #	Rating	Voltage
XXXXXX	XXXX	CLASS II	48/72
MADE IN U.S.A.			

**TORQUE SPECIFICATION FOR  
POWER CABLE SECURING TOP NUTS**  
5/16-18 UNC - 110 IN / LBS MAX



**3/8 - 16 UNC THREAD**  
V .65 MINIMUM  
.03-.05 x 45° CHAMFER  
4 PLACES, ON A Ø5.875 B. C.

**MOTOR WEIGHT: 63 LBS**  
**CLASS "H" INSULATION**  
**PERFORMANCE SPEC: 6**

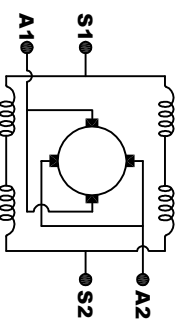
**D & D MOTOR SYSTEMS INC**

**MOTOR OUTLINE**

SIZE	DRAWN DATE	RELEASE DATE	DWG NO. / PART NO.	REV
B	5-27-08	5-27-08	170 - 004 - 0003	
SCALE	STF	DRAWN BY	MJG	REV DATE

THIS PRINT IS THE PROPERTY OF D&D MOTOR SYSTEMS INC.  
DO NOT SCALE  
WORK TO DIMENSIONS  
TOLERANCES UNLESS OTHERWISE SPECIFIED ARE AS FOLLOWS  
XX .01  
XXX .005  
XXX .03  
XX XX ROUGH CASTING .001 / +.006  
ANGLES -0.30°

**MOTOR WIRING CONNECTIONS:**  
**CW ROTATION DRIVE END**  
**CONNECT S2 & A1 TOGETHER**  
**CONNECT S1 TO BATTERY TERMINAL**  
**CONNECT A2 TO OTHER BATTERY TERMINAL**  
**CCW ROTATION DRIVE END**  
**SWITCH S1 & S2 CONNECTIONS**



**ELECTRICAL WIRING DIAGRAM**