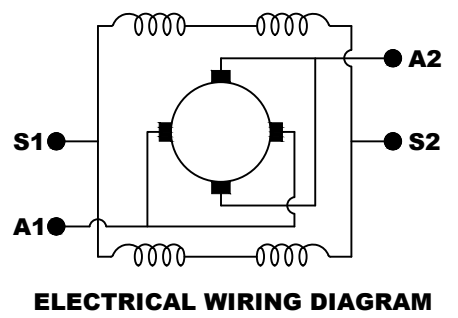
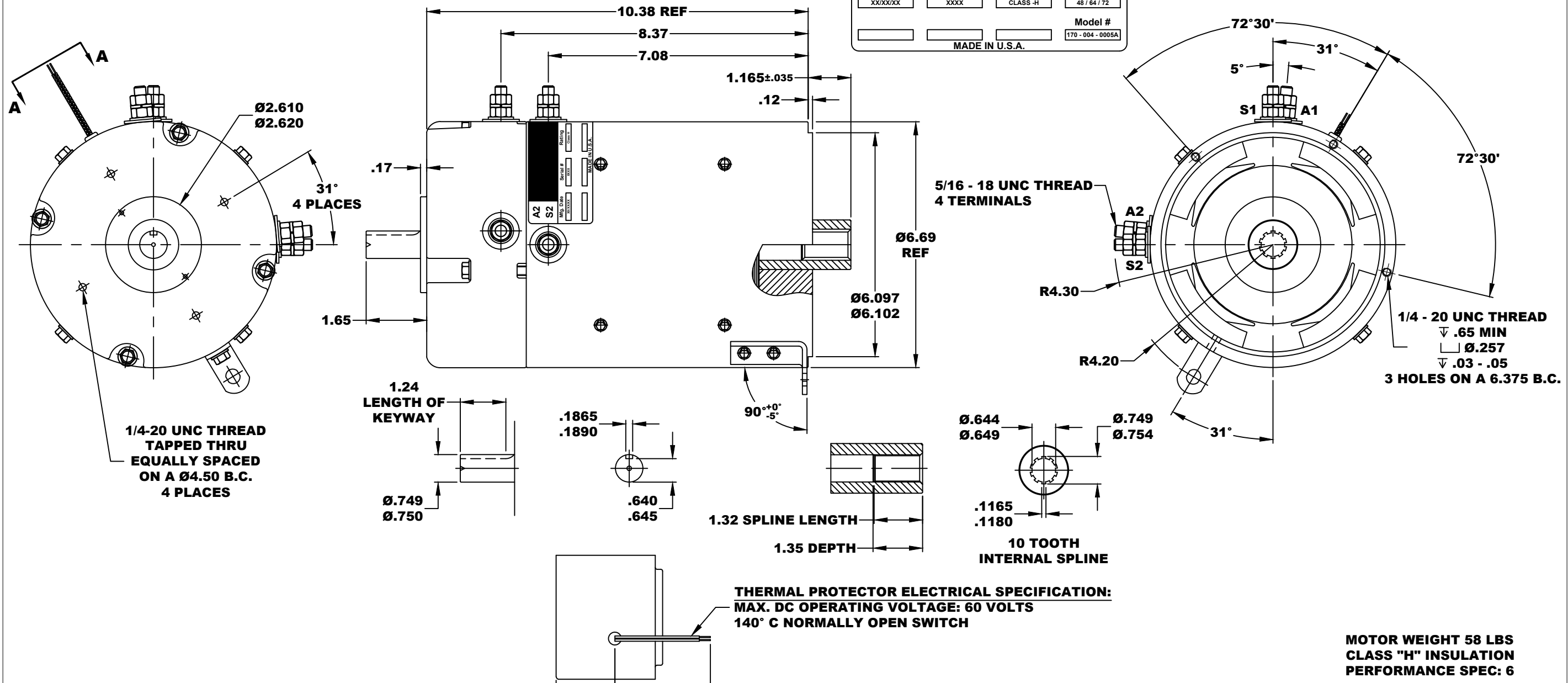


| | | | |
|----------------|----------|-------------------|--------------|
| A2 | | A1 | |
| S2 | | S1 | |
| Mfg. Date | Serial # | Rating | Voltage |
| XXXX/XX | XXXX | CLASS-H | 48 / 64 / 72 |
| | | Model # | |
| | | 170 - 004 - 0005A | |
| MADE IN U.S.A. | | | |

**TORQUE SPECIFICATION FOR
POWER CABLE SECURING TOP NUTS
5/16-18 UNC - 110 IN LBS MAX**



**MOTOR WIRING CONNECTIONS:
CW ROTATION DRIVE END
CONNECT S2 & A1 TOGETHER
CONNECT S1 TO BATTERY TERMINAL
CCW ROTATION DRIVE END
SWITCH S1 & S2 CONNECTIONS**

THIS PRINT IS THE PROPERTY OF D&D MOTOR SYSTEMS INC.

**DO NOT SCALE
WORK TO DIMENSIONS**

TOLERANCES UNLESS OTHERWISE SPECIFIED ARE AS FOLLOWS

.XX _____ .01

.XXX _____ .005

.XX ROUGH CASTING _____ .03

HOLES _____ -.001 / +.006

ANGLES _____ 0°30'

D & D MOTOR SYSTEMS INC

MOTOR OUTLINE

| | | | | |
|-------|------------|--------------|--------------------|-----|
| SIZE | DRAWN DATE | RELEASE DATE | DWG NO. / PART NO. | REV |
| B | 3-17-11 | 3-17-11 | 170 - 004 - 0005A | |
| SCALE | DRAWN BY | REV DATE | | |
| STF | MJG | | | |

**MOTOR WEIGHT 58 LBS
CLASS "H" INSULATION
PERFORMANCE SPEC: 6**