

**A2** Stealth Mfg.  
Austell, GA 30168  
tel 678-293-1050

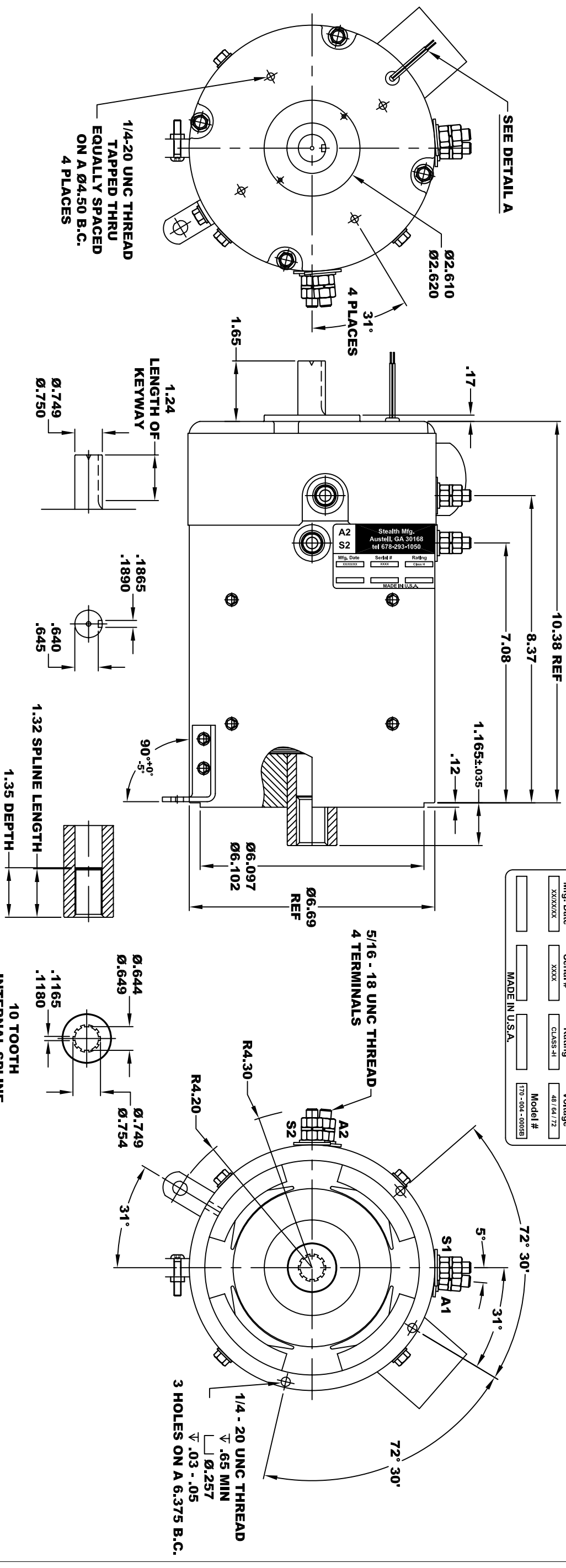
**S2**

Mfg. Date: XXX/XX/XX  
Serial #: XXXX  
Rating: CLASS #1  
Voltage: 48 / 64 / 72  
Model #: 170-004-0005B  
MADE IN U.S.A.

**A1**

**S1**

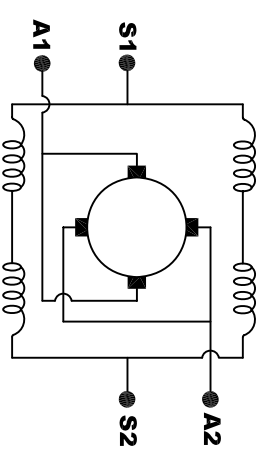
**TORQUE SPECIFICATION FOR  
POWER CABLE SECURING TOP NUTS**  
5/16-18 UNC - 110 IN LBS MAX



**THERMAL PROTECTOR ELECTRICAL SPECIFICATION:**  
MAX. DC OPERATING VOLTAGE: 60 VOLTS  
120° C NORMALLY OPEN SWITCH

**DETAIL A**

**MOTOR WEIGHT 58 LBS**  
**CLASS "H" INSULATION**  
**PERFORMANCE SPEC: 6**



**MOTOR WIRING CONNECTIONS:**  
CW ROTATION DRIVE END  
CONNECT S2 & A1 TOGETHER  
CONNECT S1 TO BATTERY TERMINAL  
CCW ROTATION DRIVE END  
CONNECT A2 TO OTHER BATTERY TERMINAL  
SWITCH S1 & S2 CONNECTIONS

THIS PRINT IS THE PROPERTY OF D&D MOTOR SYSTEMS INC.  
DO NOT SCALE  
WORK TO DIMENSIONS  
TOLERANCES UNLESS OTHERWISE SPECIFIED ARE AS FOLLOWS  
.XX \_\_\_\_\_ .01  
.XXX \_\_\_\_\_ .005  
.XX ROUGH CASTING \_\_\_\_\_ .03  
HOLES \_\_\_\_\_ -.001 / +.006  
ANGLES \_\_\_\_\_ 0°30"

**D & D MOTOR SYSTEMS INC**

**MOTOR OUTLINE**

SIZE	DRAWN DATE	RELEASE DATE	DWG NO. / PART NO.	REV
B	5-5-11	5-5-11	170 - 004 - 0005B	
SCALE	STF	DRAWN BY	MJG	REV DATE