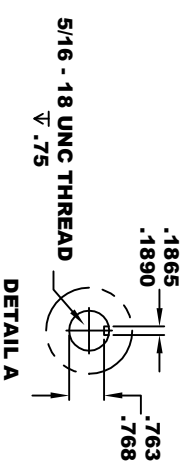
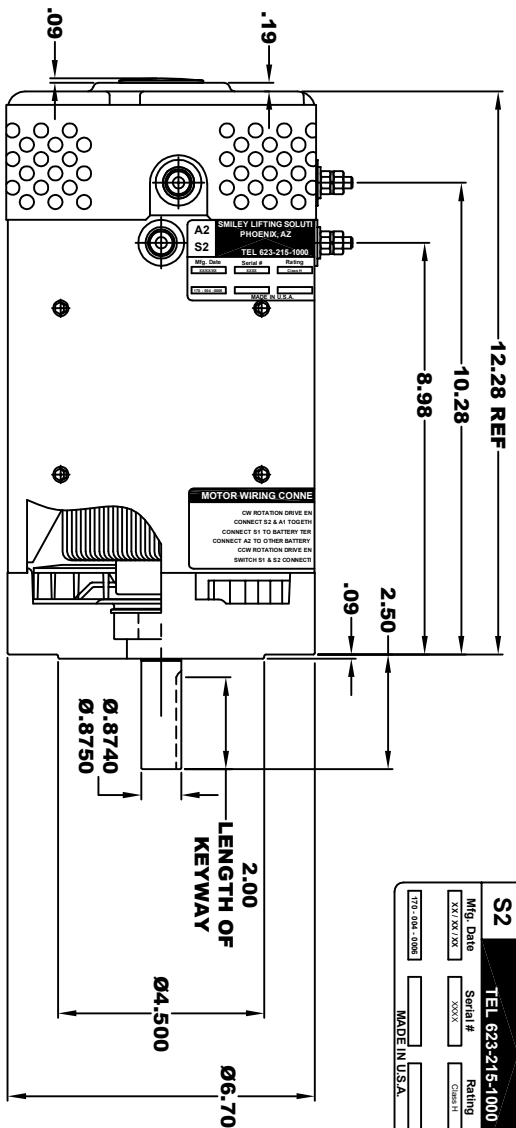
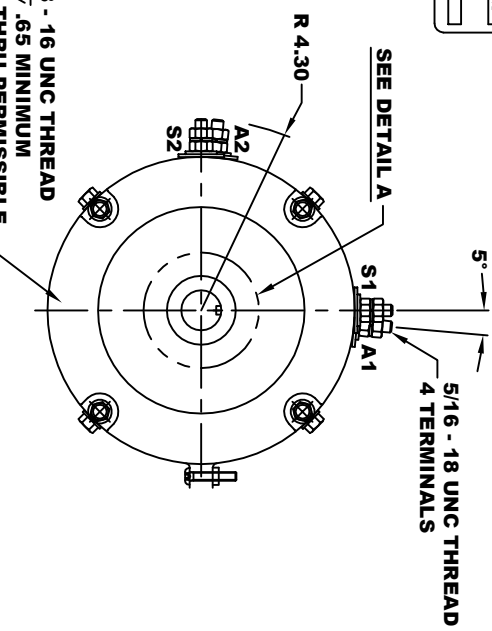


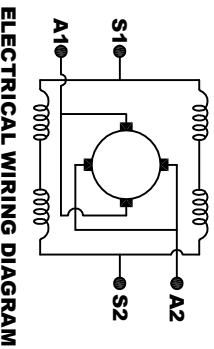
A2		SMILEY LIFTING SOLUTIONS		A1	
PHOENIX, AZ		TEL 623-215-1000		S1	
Mfg. Date	Serial #	Rating	Voltage		
XX/XX/XX	XXXX		30/40/72		
TEL 623-215-1000		MADE IN U.S.A.			



Ø 3/8 - 16 UNC THREAD
 .65 MINIMUM
 BREAK THRU PERMISSIBLE
 .03-.05 x 45° CHAMFER
 4 PLACES, ON A Ø5.875 B. C. (H)



**TORQUE SPECIFICATION FOR
 POWER CABLE SECURING TOP NUTS**
 5/16-18 UNC - 110 IN / LBS MAX



MOTOR WIRING CONNECTIONS:
 CW ROTATION DRIVE END
 CONNECT S2 & A1 TOGETHER
 CONNECT S1 TO BATTERY TERMINAL
 CCW ROTATION DRIVE END
 CONNECT A2 TO OTHER BATTERY TERMINAL
 SWITCH S1 & S2 CONNECTIONS

THIS PRINT IS THE PROPERTY OF D&D MOTOR SYSTEMS INC.
 DO NOT SCALE
 WORK TO DIMENSIONS
 TOLERANCES UNLESS OTHERWISE SPECIFIED ARE AS FOLLOWS
 .XX .01
 .XXX .005
 .XX ROUNG CASTING .03
 HOLES .001 / +.006
 ANGLES 0-30°

D & D MOTOR SYSTEMS INC		MOTOR OUTLINE	
SIZE	DRAWN DATE	RELEASE DATE	DRG NO. / PART NO.
B	7-19-17	8-9-21	170-004-0006
SCALE	DRAWN BY	AGD	REV DATE
STF			2-20-23
			REV R1

MOTOR WEIGHT: 63 LBS
 CLASS "H" INSULATION
 PERFORMANCE SPEC: 6