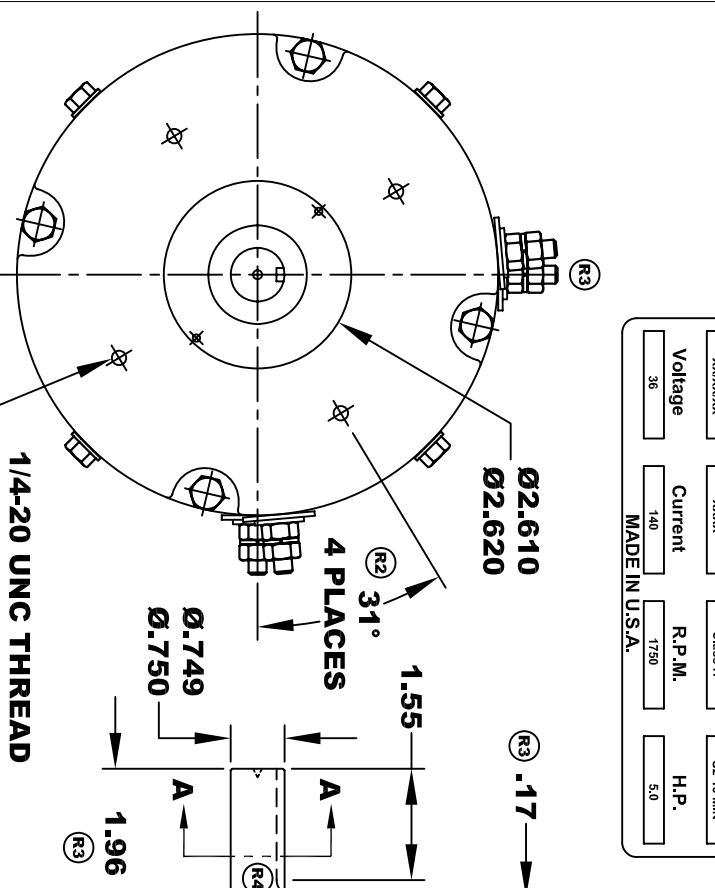
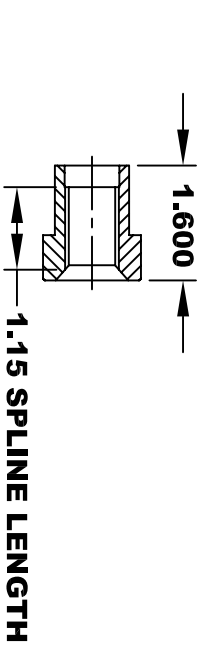


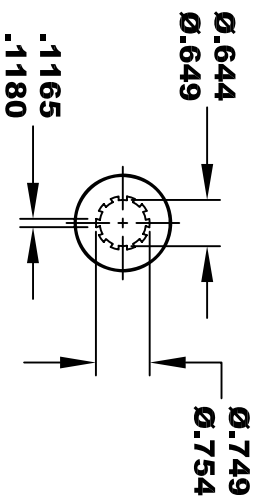
<b>A2</b>		<b>DAMASCUS CORPORATION</b>		<b>A1</b>	
<b>S2</b>		<b>Model # 170 - 005 - 0001</b>		<b>S1</b>	
<b>DC Part # EO200</b>					
Mfg. Date	Serial #	Rating	Duty		
XXXXXX	XXXX	Class H	S2-10 MIN		
Voltage	Current	R.P.M.	H.P.		
36	140	1750	5.0		
MADE IN U.S.A.					



1/4-20 UNC THREAD  
TAPPED THRU  
EQUALLY SPACED  
ON A Ø4.50 B.C.  
4 PLACES

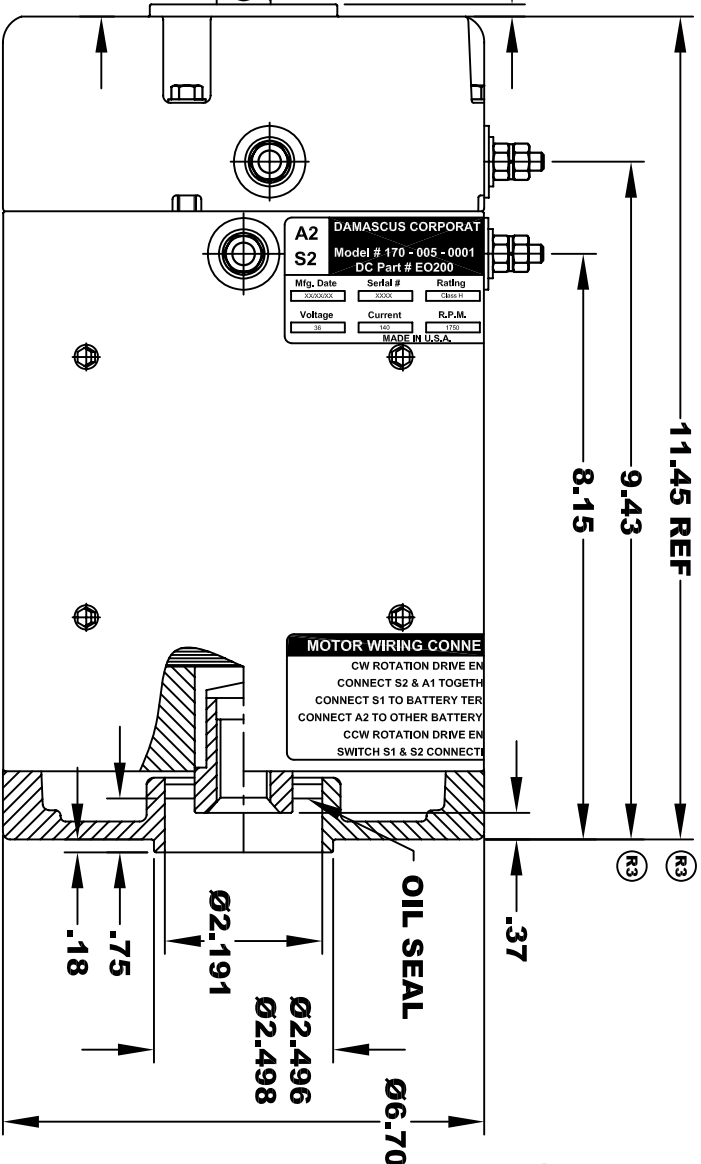


1.15 SPLINE LENGTH



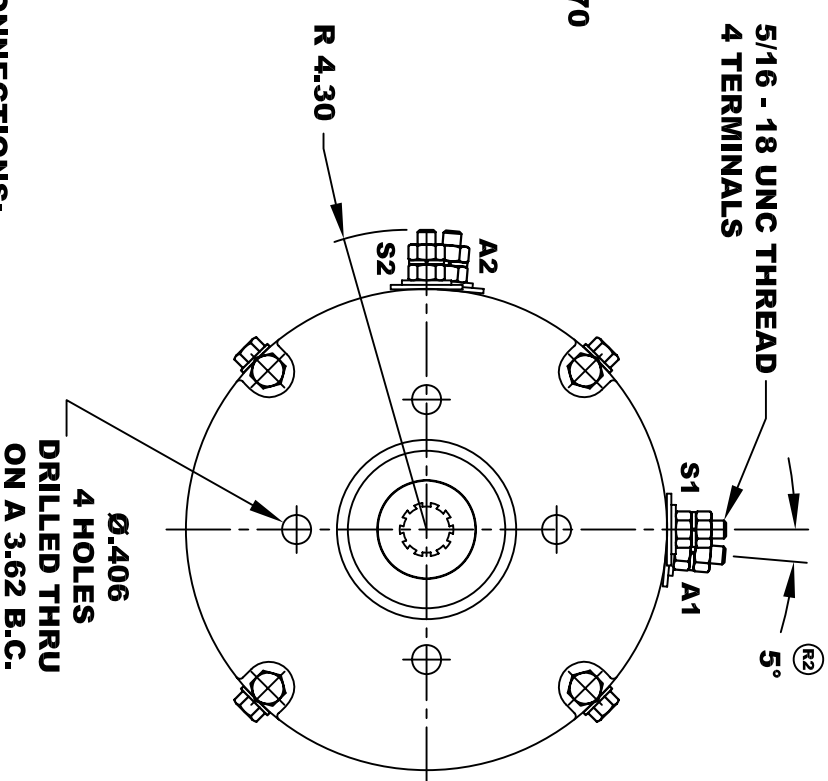
10 TOOTH

INTERNAL SPLINE  
HARDNESS OF SPLINE  
TO BE R/C 46 - 53 (.02 DEPTH MIN)

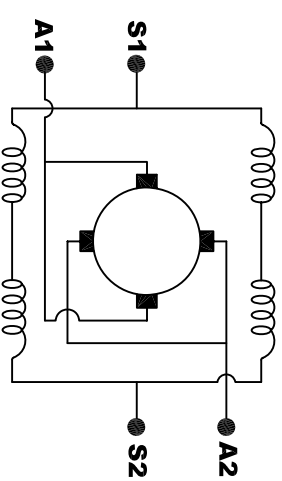


TORQUE SPECIFICATION FOR  
POWER CABLE SECURING TOP NUTS  
5/16-18 UNC - 110 IN / LBS MAX

5/16 - 18 UNC THREAD  
4 TERMINALS



Ø.406  
4 HOLES  
DRILLED THRU  
ON A 3.62 B.C.

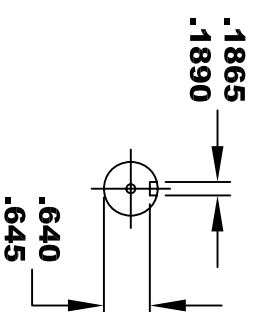


ELECTRICAL WIRING DIAGRAM

**MOTOR WIRING CONNECTIONS:**  
CW ROTATION DRIVE END  
CONNECT S2 & A1 TOGETHER  
CONNECT S1 TO BATTERY TERMINAL  
CCW ROTATION DRIVE END  
CONNECT A2 TO OTHER BATTERY TERMINAL  
CONNECT A1 TO OTHER BATTERY TERMINAL  
SWITCH S1 & S2 CONNECTIONS

MOTOR WEIGHT: 57 LBS  
CLASS "H" INSULATION  
PERFORMANCE SPEC: 9

SECTION A-A



THIS PRINT IS THE PROPERTY OF D&D MOTOR SYSTEMS INC.  
DO NOT SCALE  
WORK TO DIMENSIONS  
TOLERANCES UNLESS OTHERWISE SPECIFIED ARE AS FOLLOWS  
.XX \_\_\_\_\_ .01  
.XXX \_\_\_\_\_ .005  
.XX ROUGH CASTING \_\_\_\_\_ .03  
HOLES \_\_\_\_\_ -.001 / +.006  
ANGLES \_\_\_\_\_ 0°30"

D & D MOTOR SYSTEMS INC  
MOTOR OUTLINE

SIZE	DRAWN DATE	RELEASE DATE	DWG NO. / PART NO.	REV
B	3-29-02	6-3-02	170 - 005 - 0001	R4
SCALE	STF	DRAWN BY	MJG	ES-11A
				REV DATE
				3-27-06