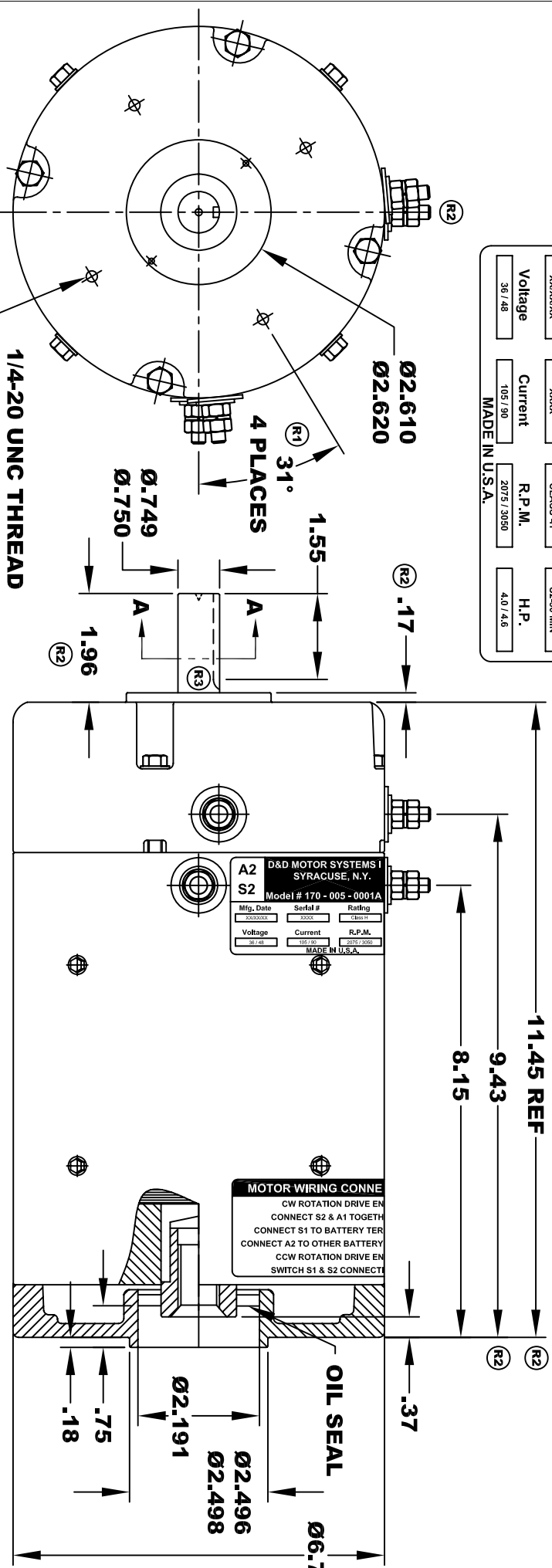
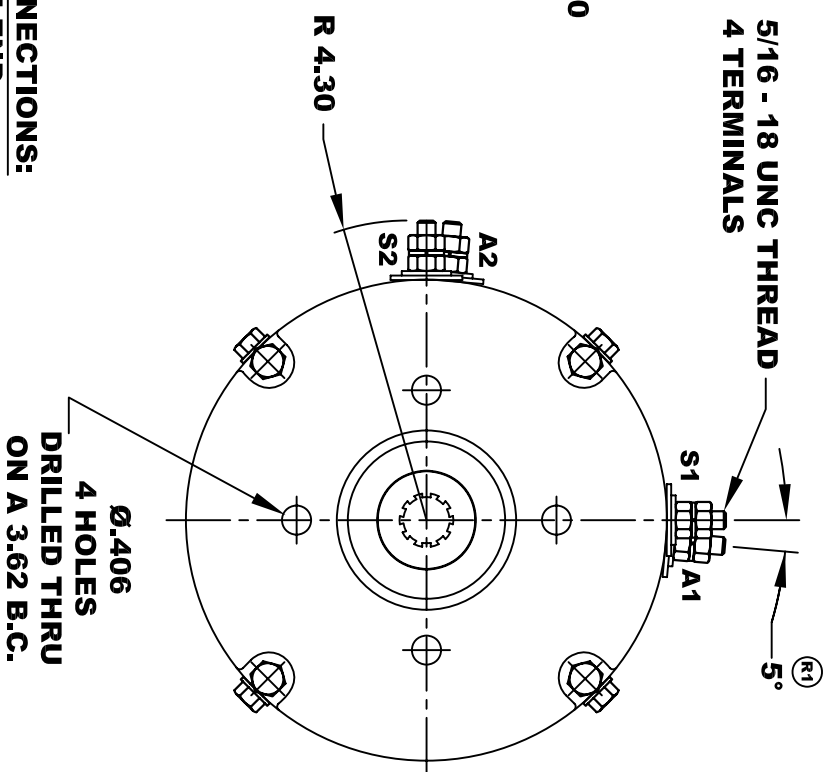


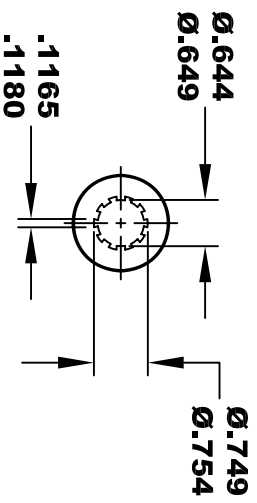
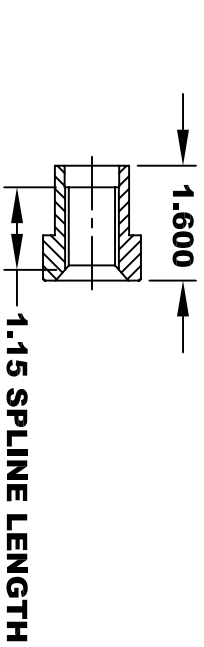
D&D MOTOR SYSTEMS INC.				A1	
SYRACUSE N.Y.				S1	
Model # 170 - 005 - 0001A					
A2	S2	Mfg. Date	Serial #	Rating	Duty
		XXXXXX	XXXX	CLASS -I	S2-30 MIN
Voltage		Current		R.P.M.	H.P.
36 / 48		105 / 90		2075 / 3050	4.0 / 4.6
MADE IN U.S.A.					



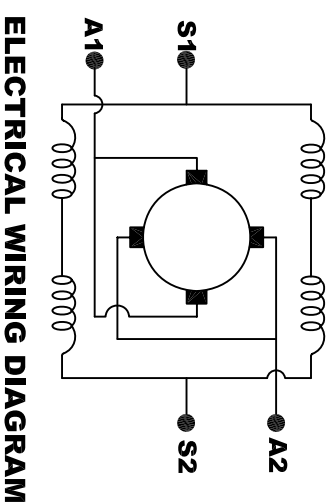
**TORQUE SPECIFICATION FOR
POWER CABLE SECURING TOP NUTS
5/16-18 UNC - 110 IN / LBS MAX**



**1/4-20 UNC THREAD
TAPPED THRU
EQUALLY SPACED
ON A Ø4.50 B.C.
4 PLACES**



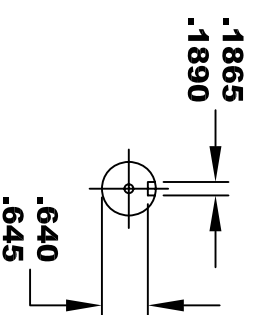
**INTERNAL SPLINE
HARDNESS OF SPLINE
TO BE R/C 46 - 53 (.02 DEPTH MIN)**



**MOTOR WIRING CONNECTIONS:
CW ROTATION DRIVE END
CONNECT S2 & A1 TOGETHER
CONNECT S1 TO BATTERY TERMINAL
CONNECT A2 TO OTHER BATTERY TERMINAL
CCW ROTATION DRIVE END
SWITCH S1 & S2 CONNECTIONS**

**MOTOR WEIGHT: 57 LBS
CLASS "H" INSULATION
PERFORMANCE SPEC: 9**

SECTION A-A



**THIS PRINT IS THE PROPERTY OF D&D MOTOR SYSTEMS INC.
DO NOT SCALE
WORK TO DIMENSIONS
TOLERANCES UNLESS OTHERWISE SPECIFIED ARE AS FOLLOWS**

.XXX _____ .005
.XX _____ .01
.XX ROUGH CASTING _____ .03
HOLES _____ -.001 / +.006
ANGLES _____ 0°30"

D & D MOTOR SYSTEMS INC

MOTOR OUTLINE

SIZE	DRAWN DATE	RELEASE DATE	DWG NO. / PART NO.	REV
B	10-3-03	10-3-03	170 - 005 - 0001A	R3
SCALE	STF	DRAWN BY	MJG	REV DATE
				3-27-06