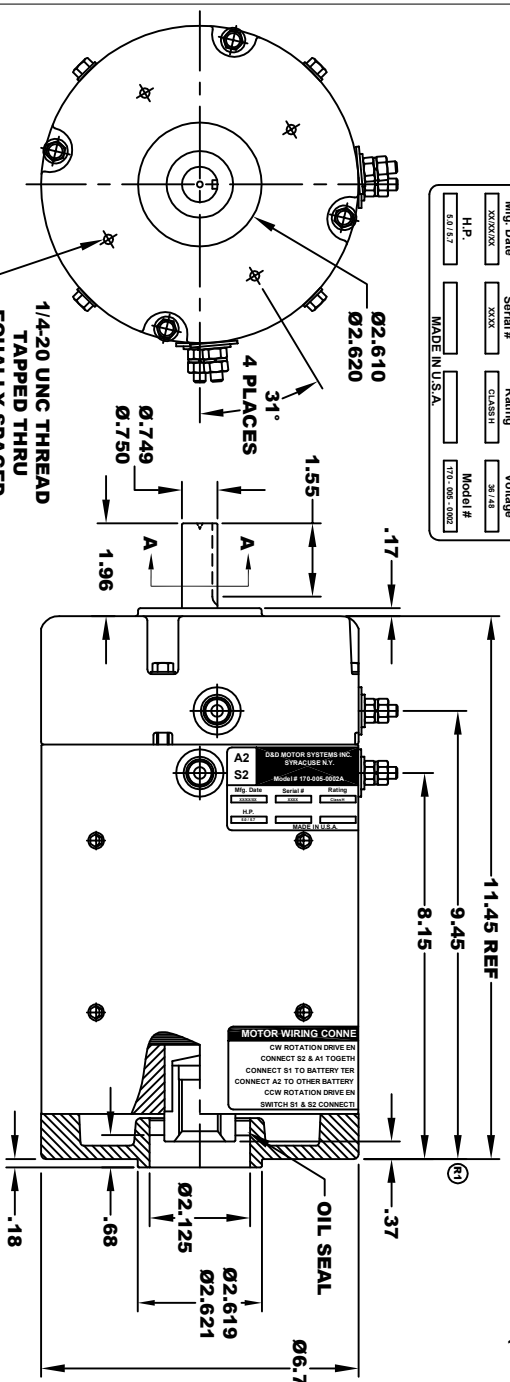
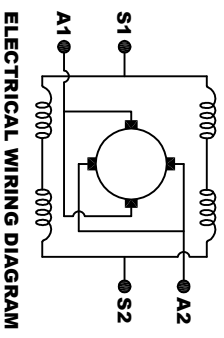
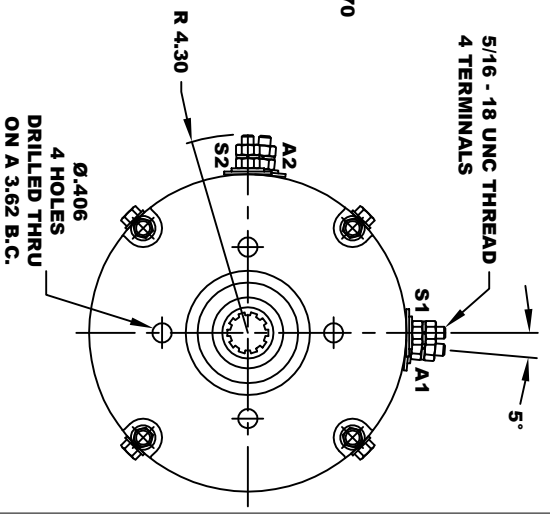


A2	D&D MOTOR SYSTEMS INC.	A1
S2	SYRACUSE N.Y.	S1
Model # 170-005-0002A		
Mfg. Date	Rating	Voltage
XXXXXX	CLASS H	30.7 AS
Serial #	CLASS H	Model #
XXXX	CLASS H	170-005-0002
H.P.	MADE IN U.S.A.	
0.0157		



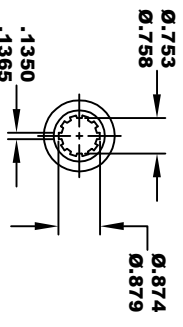
**TORQUE SPECIFICATION FOR
POWER CABLE SECURING TOP NUTS**
5/16-18 UNC (A1 / A2) - 110 IN / LBS MAX
1/4-20 UNC (F1 / F2) - 50 IN / LBS MAX



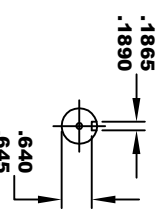
MOTOR WIRING CONNECTIONS:
CW ROTATION DRIVE END
CONNECT S2 & A1 TOGETHER
CONNECT S1 TO BATTERY TERMINAL
CONNECT A2 TO OTHER BATTERY TERMINAL
CCW ROTATION DRIVE END
SWITCH S1 & S2 CONNECTIONS

MOTOR WEIGHT: 61 LBS
CLASS "H" INSULATION
PERFORMANCE SPEC: 9

**10 TOOTH
INTERNAL SPLINE
HARDNESS OF SPLINE
TO BE R/C 46 - 53 (.02 DEPTH MIN)**



SECTION A-A



THIS PRINT IS THE PROPERTY OF D&D MOTOR SYSTEMS INC.
DO NOT SCALE
WORK TO DIMENSIONS
TOLERANCES UNLESS OTHERWISE SPECIFIED ARE AS FOLLOWS
XX .01
XXX .005
XX X .03
XX X .001 / ±.006
ANGLES .030°

D & D MOTOR SYSTEMS INC			
MOTOR OUTLINE			
SIZE	DRAWN DATE	RELEASE DATE	DWG NO. / PART NO.
B	8-29-07	11-18-22	170-005-0002A
SCALE	STF	DRAWN BY	REV DATE
		MJG	ES-40E-9 11-18-22