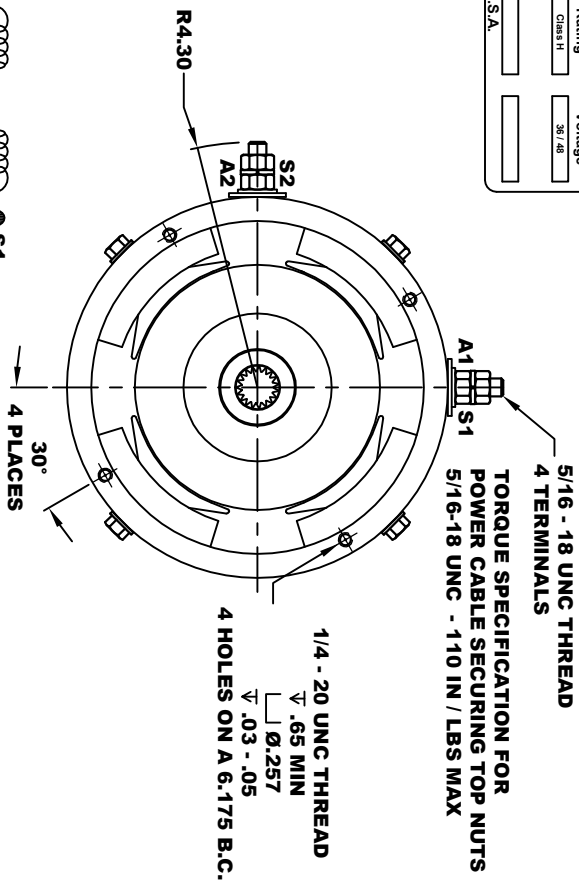
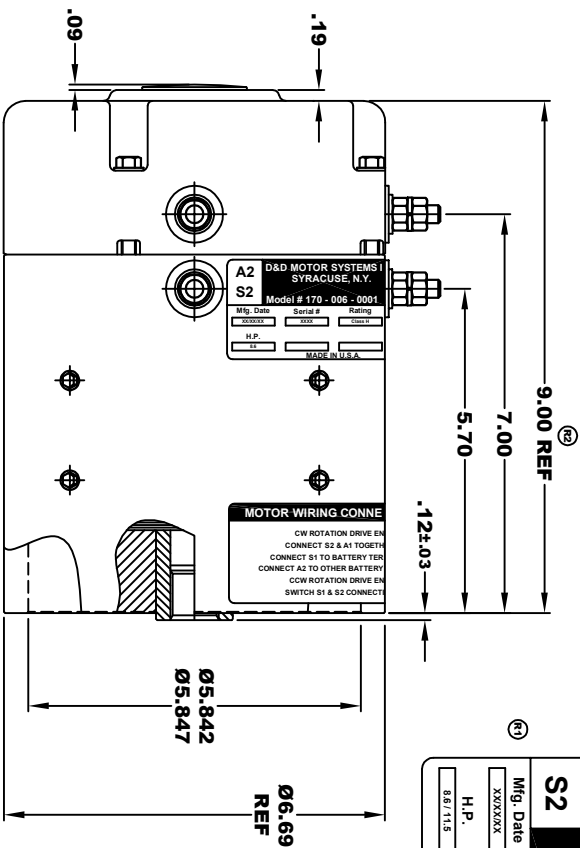
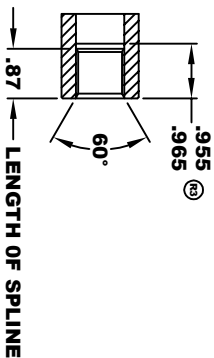


<b>D&amp;D MOTOR SYSTEMS INC.</b>			
SYRACUSE, N.Y.			
<b>A2</b>	<b>S2</b>	<b>A1</b>	<b>S1</b>
Model # 170 - 006 - 0001			
Mfg. Date	Serial #	Rating	Voltage
XXXXXX	XXXX	Class H	36 / 48
H.P.			
8.0 / 11.5			
MADE IN U.S.A.			

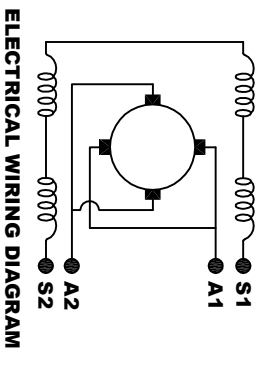


**INTERNAL INVOLUTE SPLINE SPECIFICATION  
CLASS 5 FILLET ROOT SIDE FIT (PER A.N.S.I. B92.1)**

NO. OF TEETH	19
SPLINE PITCH	24 / 48
PRESSURE ANGLE	45°
BASE Ø	.5597 REF
PITCH Ø	.7916 REF
MAJOR Ø	.850 - .859
FORM Ø	.835
MINOR Ø	.767 - .772
CIRCULAR SPACE WIDTH	.0764
EFFECTIVE SPACE WIDTH	.0738
MAX. DIMENSION BETWEEN TWO PINS	.6714
PIN Ø	.0800
SPLINE HARDNESS TO BE R/C 26-34	



**MOTOR WEIGHT: 46 LBS  
CLASS "H" INSULATION  
PERFORMANCE SPEC: 22**



**ELECTRICAL WIRING DIAGRAM**

THIS PRINT IS THE PROPERTY OF D&D MOTOR SYSTEMS INC.  
DO NOT SCALE  
WORK TO DIMENSIONS  
TOLERANCES UNLESS OTHERWISE SPECIFIED ARE AS FOLLOWS

XX	.01
XXX	.005
XXX	.03
XXX	.001 / +.006
ANGLES	0-30°

**MOTOR WIRING CONNECTIONS:**  
CW ROTATION DRIVE END  
CONNECT S2 & A1 TOGETHER  
CONNECT S1 TO BATTERY TERMINAL  
CONNECT A2 TO OTHER BATTERY TERMINAL  
CW ROTATION DRIVE END  
SWITCH S1 & S2 CONNECTIONS

**D & D MOTOR SYSTEMS INC**

**MOTOR OUTLINE**

SIZE	DRAWN DATE	RELEASE DATE	DWG NO. / PART NO.	REV
B	7-19-02	1-23-03	170 - 006 - 0001	R3
SCALE	STF	DRAWN BY	MJG	REV DATE
				12-6-05