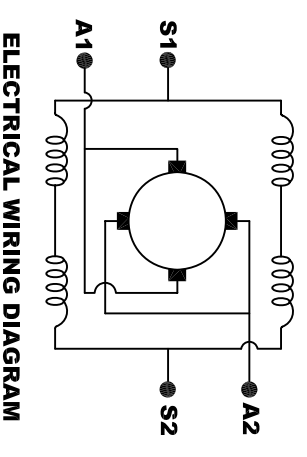
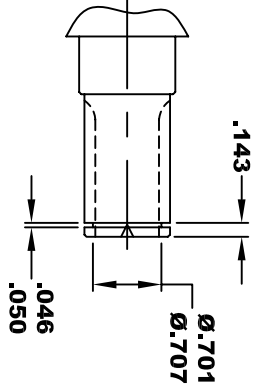
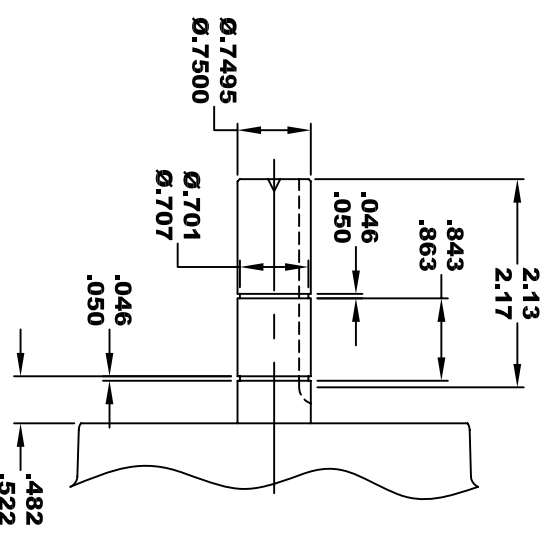
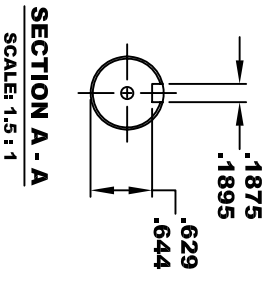
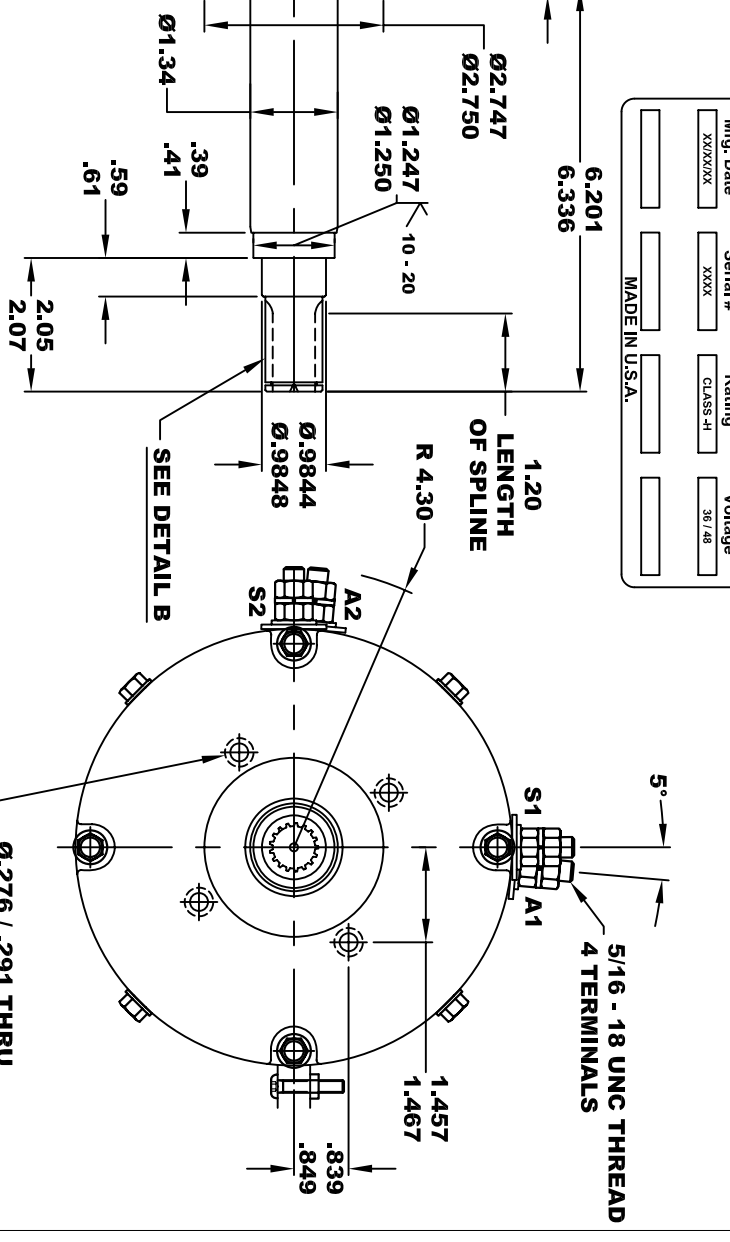
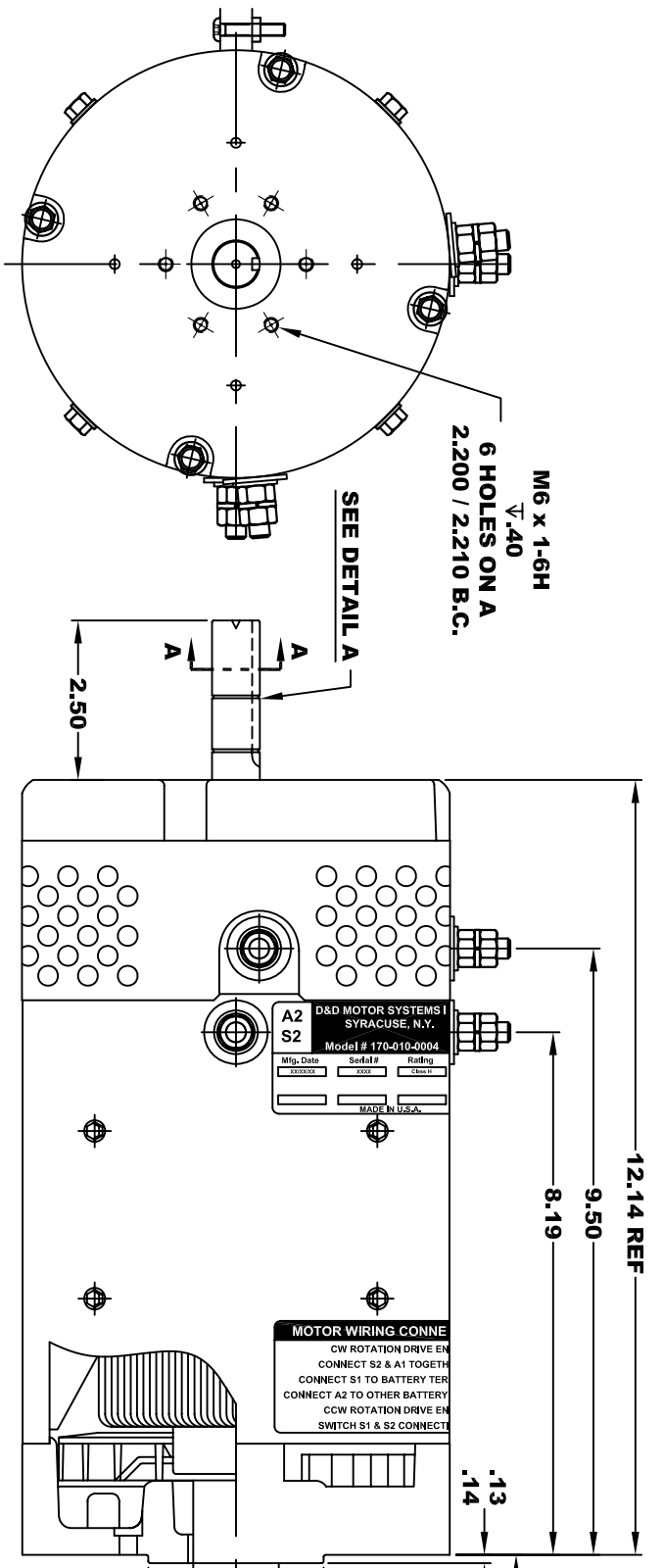


**TORQUE SPECIFICATION FOR  
POWER CABLE SECURING TOP NUTS  
5/16-18 UNC - 110 IN / LBS MAX**

<b>D&amp;D MOTOR SYSTEMS INC.</b>		<b>A1</b>	
SYRACUSE N.Y.		<b>A2</b>	
Model # 170-010-0004		<b>S2</b>	
Mfg. Date	Serial #	Rating	Voltage
XXXXXX	XXXX	CLASS -H	36/148
MADE IN U.S.A.			



**MOTOR WIRING CONNECTIONS:**  
**CW ROTATION DRIVE END**  
 CONNECT S2 & A1 TOGETHER  
 CONNECT S1 TO BATTERY TERMINAL  
 CONNECT A2 TO OTHER BATTERY TERMINAL  
**CCW ROTATION DRIVE END**  
 SWITCH S1 & S2 CONNECTIONS

- EXTERNAL INVOLUTE SPLINE SPECIFICATION**
- NO. OF TEETH \_\_\_\_\_ 17
  - DIAMETRICAL PITCH \_\_\_\_\_ 24/48
  - PRESSURE ANGLE \_\_\_\_\_ 30°
  - PIN Ø \_\_\_\_\_ .080
  - DIA OVER 2 PINS AFTER HARD \_\_\_\_\_ .8235 / .8254
  - FORM Ø \_\_\_\_\_ .663
  - BASE Ø \_\_\_\_\_ .6134
  - MAJOR Ø \_\_\_\_\_ .748 / .750
  - PITCH Ø \_\_\_\_\_ .7083
  - MINOR Ø \_\_\_\_\_ .652
  - CIRCULAR TOOTH THICKNESS \_\_\_\_\_ .0655
  - MAX ACTUAL \_\_\_\_\_ .0655
  - MIN EFFECTIVE \_\_\_\_\_ .0654

**MOTOR WEIGHT: 61 LBS**  
**CLASS "H" INSULATION**  
**PERFORMANCE SPEC: 11**

THIS PRINT IS THE PROPERTY OF D&D MOTOR SYSTEMS INC.  
 DO NOT SCALE  
 WORK TO DIMENSIONS  
 TOLERANCES UNLESS OTHERWISE SPECIFIED ARE AS FOLLOWS

.XXX _____	.005
.XX _____	.01
.X _____	.03
HOLES _____	-.001 / +.006
ANGLES _____	0°30"

# D & D MOTOR SYSTEMS INC

## MOTOR OUTLINE

SIZE	DRAWN DATE	RELEASE DATE	DWG NO. / PART NO.	REV
B	4-5-05	9-14-07	170-010-0004	
SCALE	STF	DRAWN BY	MJG	REV DATE