

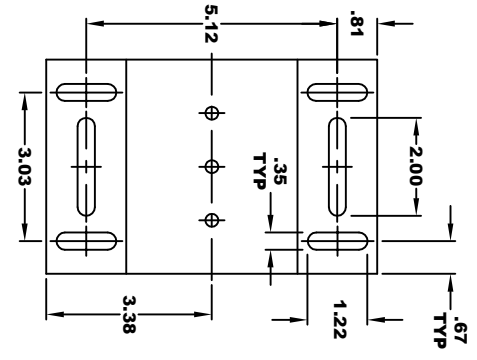
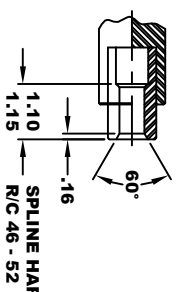
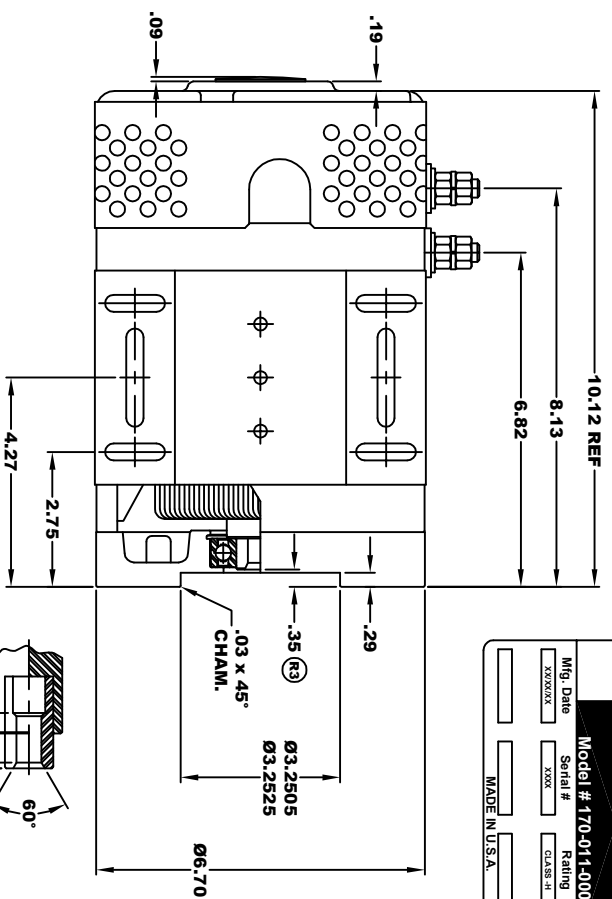
**D&D MOTOR SYSTEMS INC.**  
SYRACUSE N.Y.

Model # 170-011-0004

Mfg. Date	Serial #	Rating	Voltage
XXXXXX	XXXX	CLASS -H	12V -48V

MADE IN U.S.A.

**TORQUE SPECIFICATION FOR  
POWER CABLE SECURING TOP NUTS**  
3/8-16 UNC - 140 IN / LBS MAX

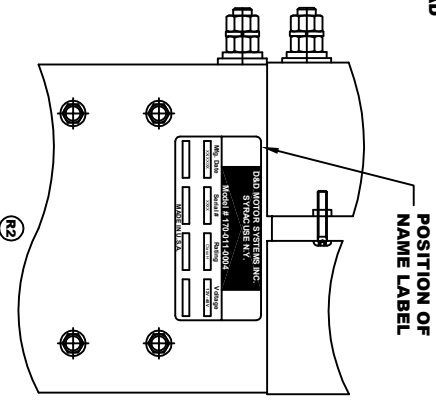
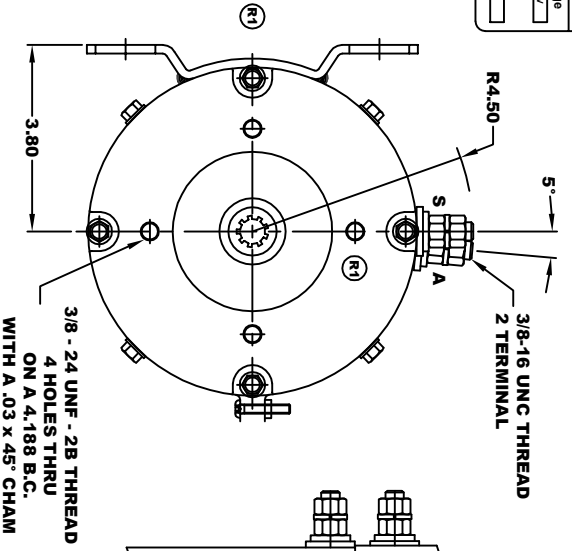


**INTERNAL INVOLUTE SPLINE SPECIFICATION  
FLAT ROOT SIDE FIT (PER A.N.S.I. B92.1 CLASS 5)**

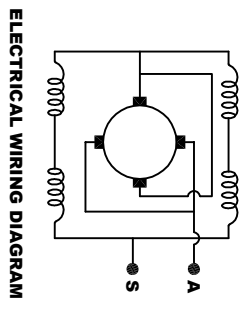
NO. OF TEETH \_\_\_\_\_ 9  
 SPLINE PITCH \_\_\_\_\_ 16 / 32  
 PRESSURE ANGLE \_\_\_\_\_ 30°  
 BASE Ø \_\_\_\_\_ .4871 REF  
 PITCH Ø \_\_\_\_\_ .5625 REF  
 MAJOR Ø \_\_\_\_\_ .651  
 FORM Ø \_\_\_\_\_ .629  
 MINOR Ø \_\_\_\_\_ .509 - .514

**CIRCULAR SPACE WIDTH**  
 MAX ACTUAL \_\_\_\_\_ .1008  
 MIN EFFECTIVE \_\_\_\_\_ .0982  
 MAX DIMENSION BETWEEN  
 TWO PINS \_\_\_\_\_ .3972  
 PIN Ø \_\_\_\_\_ .1080

Ø .010	A
Ø .010	B



**MOTOR WEIGHT: 52 LBS**  
CLASS "H" INSULATION  
PERFORMANCE SPEC: 27



**MOTOR WIRING CONNECTIONS:**  
 CCW ROTATION DRIVE END  
 CONNECT ONE POWER CABLE TO TERMINAL A  
 CONNECT THE OTHER POWER CABLE TO TERMINAL S

THIS PRINT IS THE PROPERTY OF D&D MOTOR SYSTEMS INC.  
 DO NOT SCALE  
 WORK TO DIMENSIONS  
 TOLERANCES UNLESS OTHERWISE SPECIFIED ARE AS FOLLOWS

XX	.01
XXX	.005
XXR	.005
XXR	.03
HOLES	.001 / +.006
ANGLES	±.30°

**D & D MOTOR SYSTEMS INC**

**MOTOR OUTLINE**

SIZE	DRAWN DATE	RELEASE DATE	DRG NO.	7 PART NO.	REV
B	3-28-05	7-31-23	170-011-0004		R4
SCALE	STF	DRAWN BY	MJG	ES-27C-27	REV DATE
					10-3-17