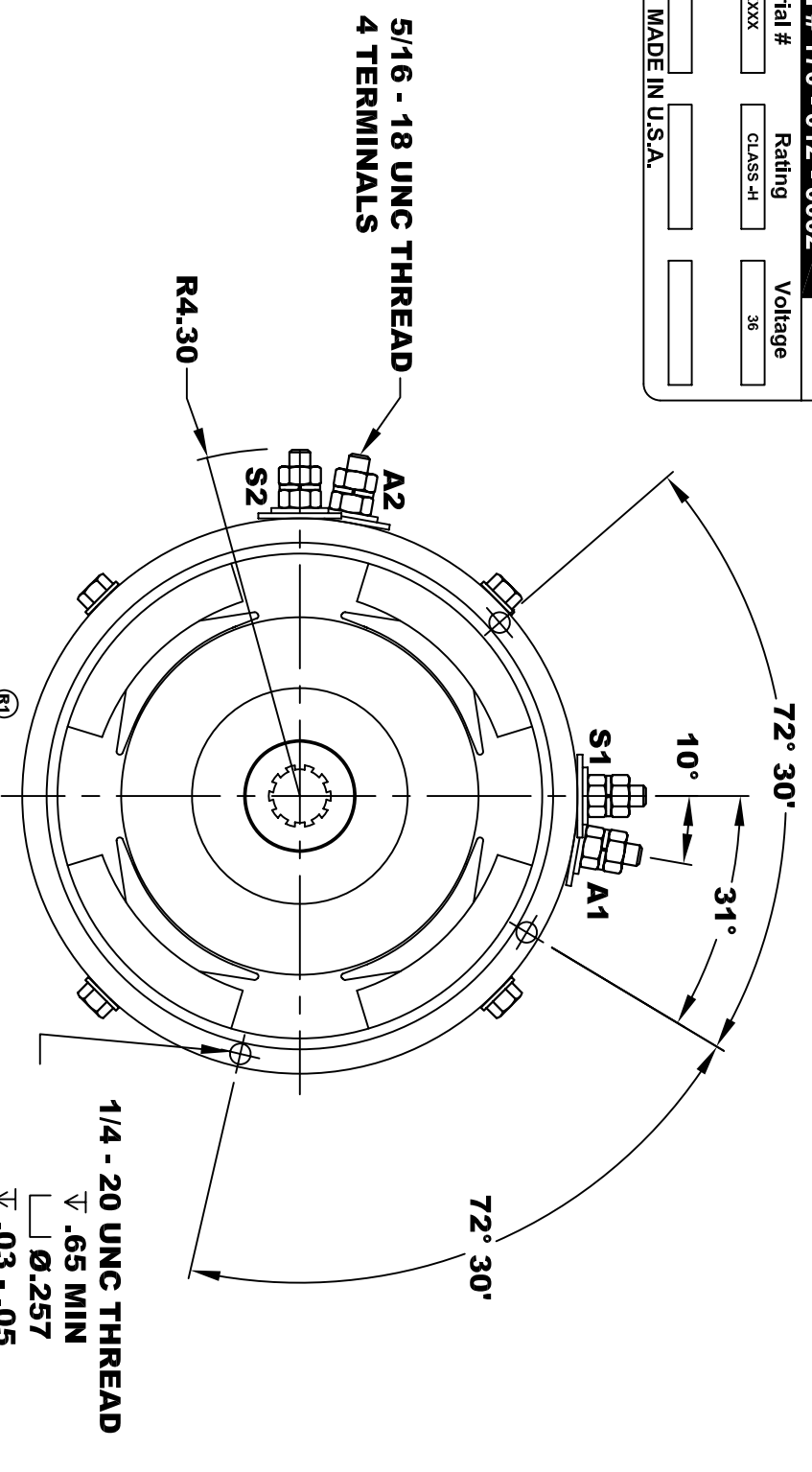
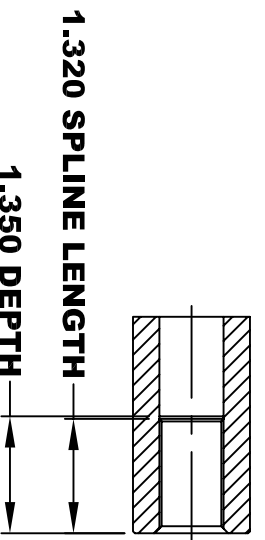
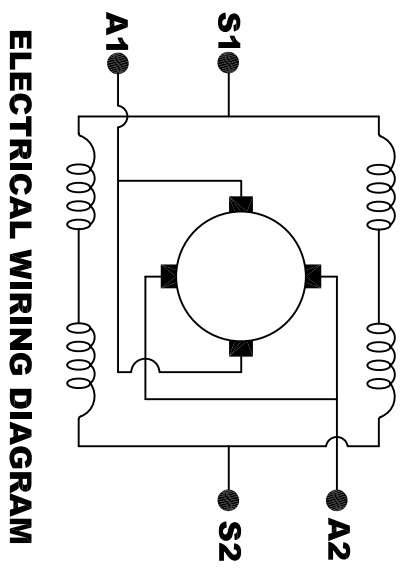


<b>D&amp;D MOTOR SYSTEMS INC.</b>			
<b>SYRACUSE, N.Y.</b>			
<b>A2</b>	<b>S2</b>	<b>A1</b>	<b>S1</b>
<b>Model # 170 - 012 - 0002</b>			
Mfg. Date	Serial #	Rating	Voltage
XXXXXX	XXXX	CLASS -H	36
MADE IN U.S.A.			



**TORQUE SPECIFICATION FOR  
POWER CABLE SECURING TOP NUTS  
5/16-18 UNC - 110 IN / LBS MAX**

**MOTOR WEIGHT: 46 LBS  
CLASS "H" INSULATION  
PERFORMANCE SPEC: 42**



**MOTOR WIRING CONNECTIONS:**  
**CW ROTATION DRIVE END**  
 CONNECT S2 & A1 TOGETHER  
 CONNECT S1 TO BATTERY TERMINAL  
 CONNECT A2 TO OTHER BATTERY TERMINAL  
**CCW ROTATION DRIVE END**  
 SWITCH S1 & S2 CONNECTIONS

THIS PRINT IS THE PROPERTY OF D&D MOTOR SYSTEMS INC.  
 DO NOT SCALE  
 WORK TO DIMENSIONS  
 TOLERANCES UNLESS OTHERWISE SPECIFIED ARE AS FOLLOWS  
 .XX .01  
 .XXX .005  
 .XX ROUGH CASTING .03  
 HOLES -.001 / +.006  
 ANGLES 0°30"

<b>D &amp; D MOTOR SYSTEMS INC</b>			
<b>MOTOR OUTLINE</b>			
SIZE	DRAWN DATE	RELEASE DATE	DWG NO. / PART NO.
B	7-15-04	9-20-04	170 - 012 - 0002
SCALE	STF	DRAWN BY	REV DATE
		MJG	ES-47-42 5-18-05