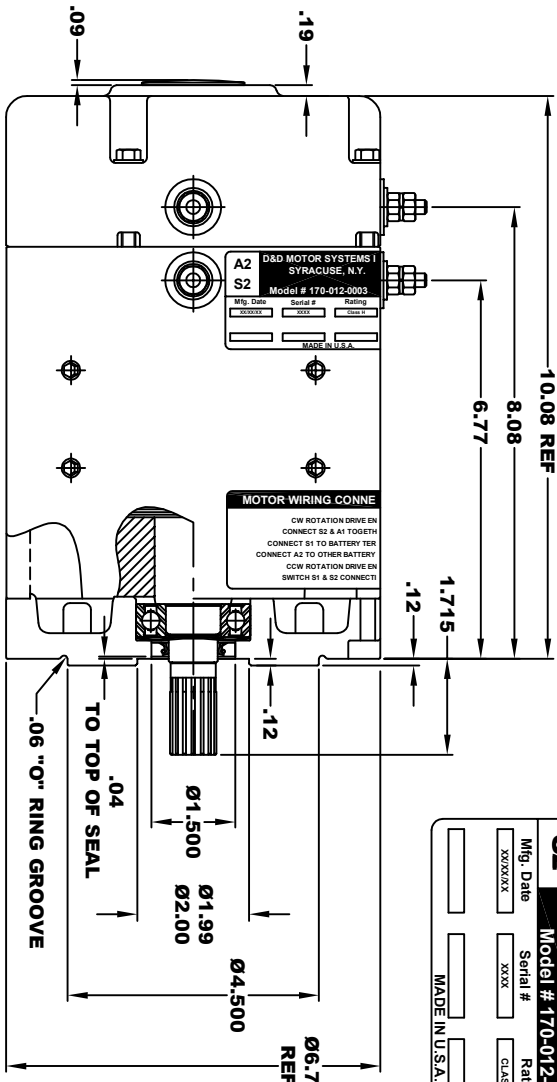
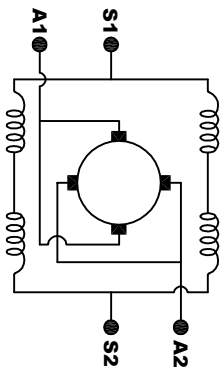
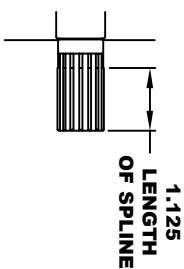


EXTERNAL INVOLUTE SPLINE DATA	
TYPE OF FIT	SIDE FIT
NUMBER OF TEETH	16
SPLINE PITCH	20 / 40
PRESSURE ANGLE	30°
BASE DIAMETER	.692 REF
PITCH DIAMETER	.800 REF
MAJOR DIAMETER (h11)	.850 - .800
FORM DIAMETER	.746
MINOR DIAMETER (h14)	.686 -

MOTOR WEIGHT 49 LBS
 CLASS "H" INSULATION
 PERFORMANCE SPEC: 42



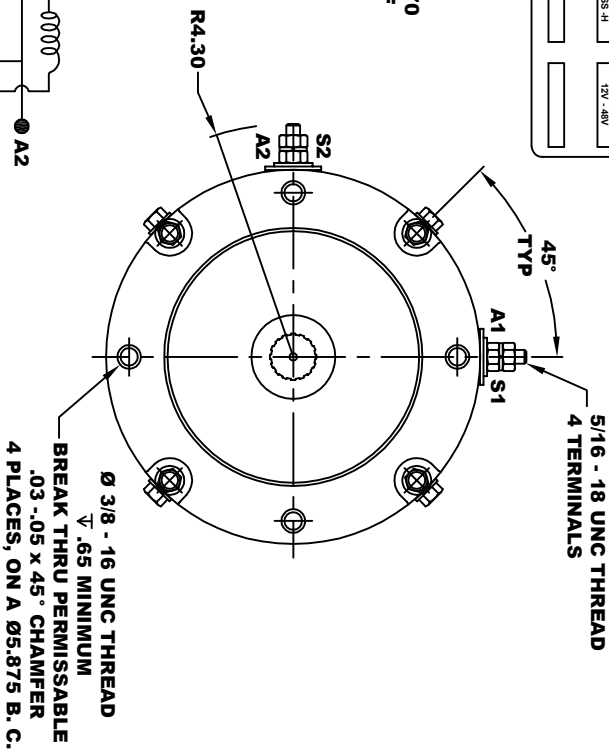
D&D MOTOR SYSTEMS INC. SYRACUSE N.Y.			
A2	S2	A1	S1
Model # 170-012-0003			
Mfg. Date	Serial #	Rating	Voltage
XXXXXX	XXXX	CLASS "H"	12V - 48V
MADE IN U.S.A.			



ELECTRICAL WIRING DIAGRAM

THIS PRINT IS THE PROPERTY OF D&D MOTOR SYSTEMS INC.
 DO NOT SCALE
 WORK TO DIMENSIONS
 TOLERANCES UNLESS OTHERWISE SPECIFIED ARE AS FOLLOWS
 .XX .01
 .XXX .005
 .XXR .03
 .XXXR .001 / +.006
 ANGLES .0-30°

TORQUE SPECIFICATION FOR
 POWER CABLE SECURING TOP NUTS
 5/16-18 UNC - 110 IN / LBS MAX



MOTOR WIRING CONNECTIONS:
 CW ROTATION DRIVE END
 CONNECT S2 & A1 TOGETHER
 CONNECT S1 TO BATTERY TERMINAL
 CONNECT A2 TO OTHER BATTERY TERMINAL
 CW ROTATION DRIVE END
 SWITCH S1 & S2 CONNECTIONS

D & D MOTOR SYSTEMS INC

MOTOR OUTLINE

SIZE	DRAWN DATE	RELEASE DATE	DWG NO. / PART NO.	REV
B	1-5-05	7-31-23	170-012-0003	
SCALE	STF	DRAWN BY	MJG	ES-85A-42