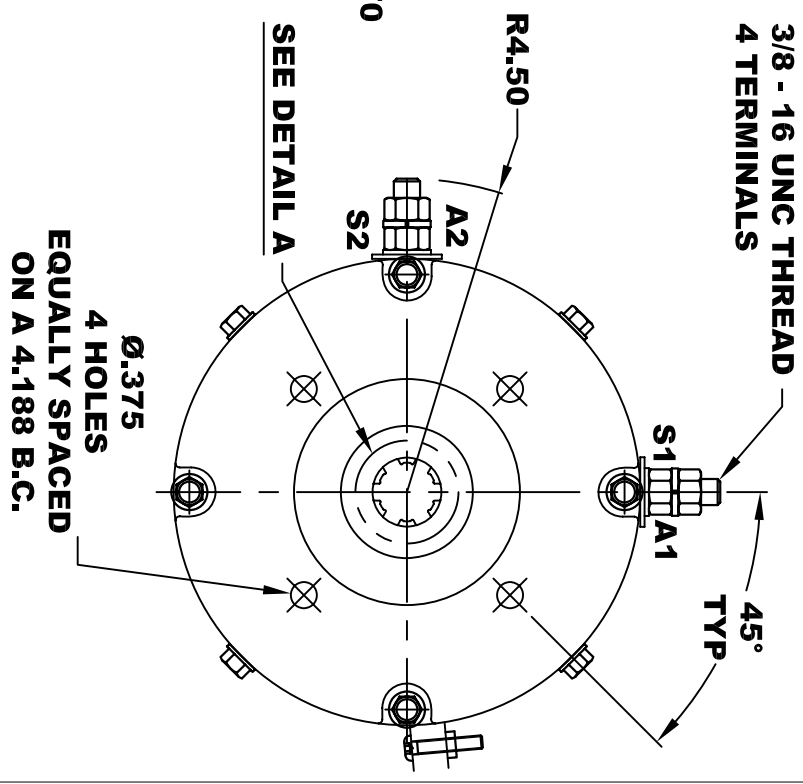
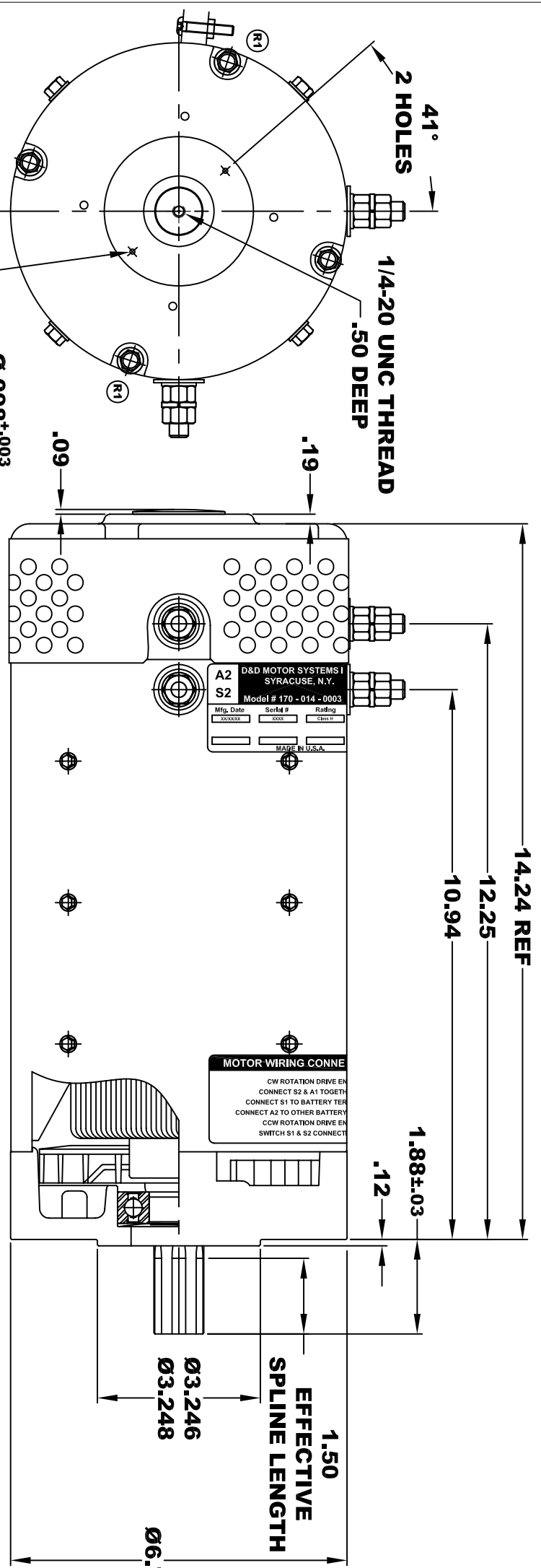
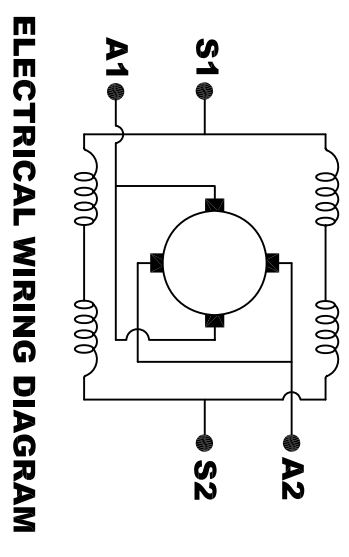


<b>D&amp;D MOTOR SYSTEMS INC.</b>			
SYRACUSE N.Y.			
<b>A2</b>	<b>A1</b>	<b>Model # 170 - 014 - 0003</b>	
<b>S2</b>	<b>S1</b>	Mfg. Date	Serial #
		XXXXXX	XXXX
		Rating	Voltage
		CLASS -H-	48
		MADE IN U.S.A.	

**TORQUE SPECIFICATION FOR  
POWER CABLE SECURING TOP NUTS**  
3/8-16 UNC - 140 IN / LBS MAX



**Ⓜ MOTOR WEIGHT: 81 LBS**  
**CLASS "H" INSULATION**  
**PERFORMANCE SPEC: 29**



**MOTOR WIRING CONNECTIONS:**  
**CW ROTATION DRIVE END**  
**CONNECT S2 & A1 TOGETHER**  
**CONNECT S1 TO BATTERY TERMINAL**  
**CONNECT A2 TO OTHER BATTERY TERMINAL**  
**CCW ROTATION DRIVE END**  
**SWITCH S1 & S2 CONNECTIONS**

THIS PRINT IS THE PROPERTY OF D&D MOTOR SYSTEMS INC.  
DO NOT SCALE  
WORK TO DIMENSIONS  
TOLERANCES UNLESS OTHERWISE SPECIFIED ARE AS FOLLOWS  
XX .01  
XXX .005  
.XX ROUGH CASTING .03  
HOLES .001 / +.006  
ANGLES 0°-30°

<b>D &amp; D MOTOR SYSTEMS INC</b>			
<b>MOTOR OUTLINE</b>			
SIZE	DRAWN DATE	RELEASE DATE	DWG NO. / PART NO.
B	6-23-05	1-12-07	170-014-0003
SCALE	STF	DRAWN BY	REV DATE
		MJG	ES-62A-29 10-23-15