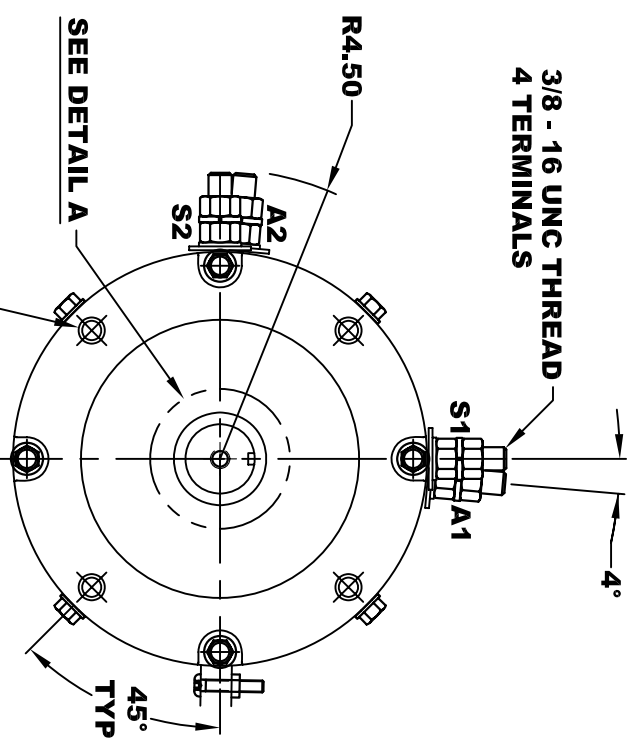
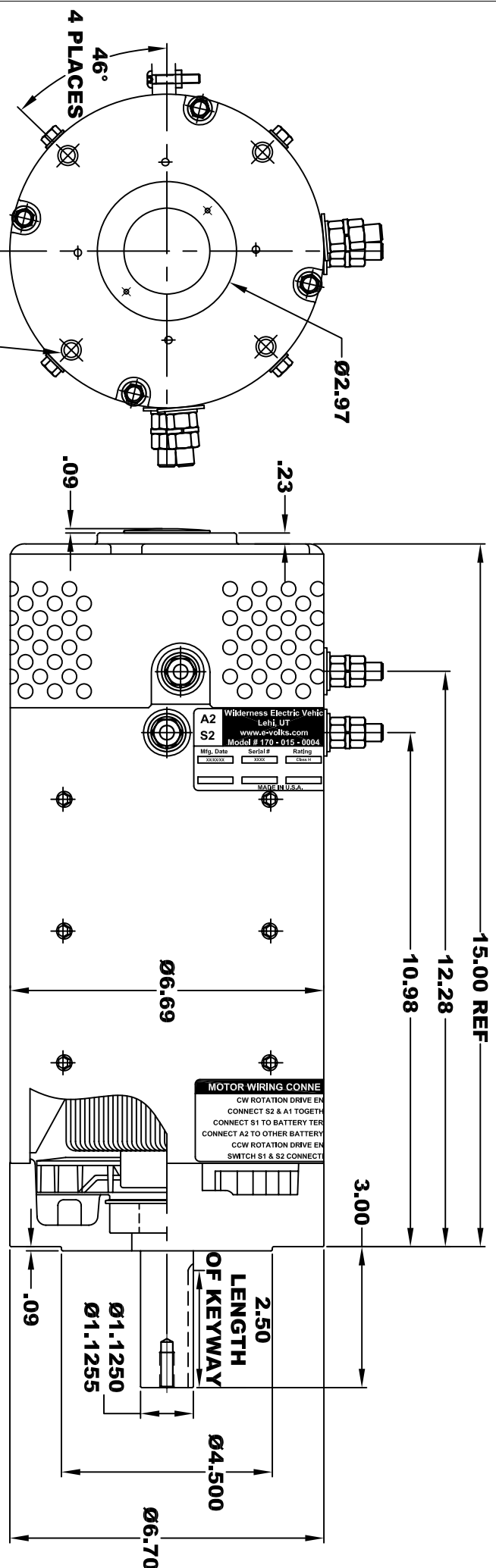


Wilderness Electric Vehicles			
Lehi, UT			
www.e-volks.com			
Model # 170 - 015 - 0004			
A2	S2	A1	S1
Mfg. Date	Serial #	Rating	Voltage
XXXXXX	XXXX	CLASS H	72 / 120
MADE IN U.S.A.			

**TORQUE SPECIFICATION FOR  
POWER CABLE SECURING TOP NUTS**  
3/8-16 UNC - 140 IN / LBS MAX



**Ø 3/8 - 16 UNC THREAD**  
TAPPED THRU  
.03 -.05 x 45° CHAMFER  
4 PLACES, ON A Ø5.875 B. C.

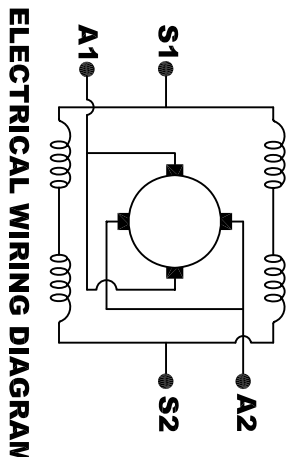
**Ø 3/8 - 16 UNC THREAD**  
TAPPED THRU  
.03 -.05 x 45° CHAMFER  
4 PLACES, ON A Ø5.875 B. C.

**Ø 3/8 - 16 UNC THREAD**  
TAPPED THRU  
.03 -.05 x 45° CHAMFER  
4 PLACES, ON A Ø5.875 B. C.

**Ø 3/8 - 16 UNC THREAD**  
TAPPED THRU  
.03 -.05 x 45° CHAMFER  
4 PLACES, ON A Ø5.875 B. C.

**MOTOR WEIGHT: 83 LBS**  
**CLASS "H" INSULATION**  
**PERFORMANCE SPEC: 16**

**MOTOR WIRING CONNECTIONS:**  
CW ROTATION DRIVE END  
CONNECT S2 & A1 TOGETHER  
CONNECT S1 TO BATTERY TERMINAL  
CCW ROTATION DRIVE END  
CONNECT A2 TO OTHER BATTERY TERMINAL  
CONNECT S1 & S2 CONNECTIONS



THIS PRINT IS THE PROPERTY OF D&D MOTOR SYSTEMS INC.  
DO NOT SCALE  
WORK TO DIMENSIONS  
TOLERANCES UNLESS OTHERWISE SPECIFIED ARE AS FOLLOWS  
.XX \_\_\_\_\_ .01  
.XXX \_\_\_\_\_ .005  
.XX ROUGH CASTING \_\_\_\_\_ .03  
HOLES \_\_\_\_\_ -.001 / +.006  
ANGLES \_\_\_\_\_ 0°30"

D & D MOTOR SYSTEMS INC			
MOTOR OUTLINE			
SIZE	DRAWN DATE	RELEASE DATE	DWG NO. / PART NO.
B	5-28-08	5-28-08	170 - 015 - 0004
SCALE	STF	DRAWN BY	MJG
			REV