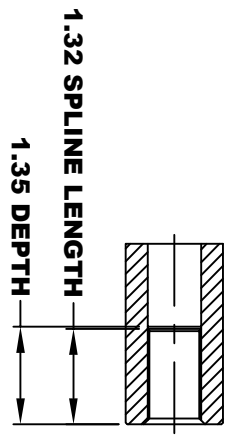
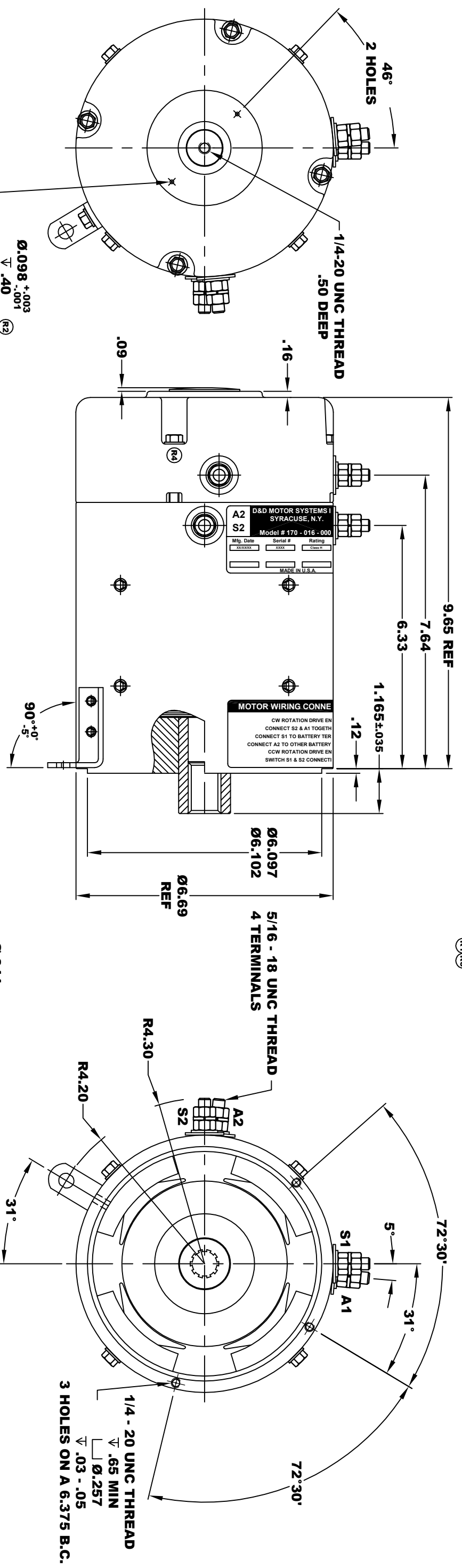
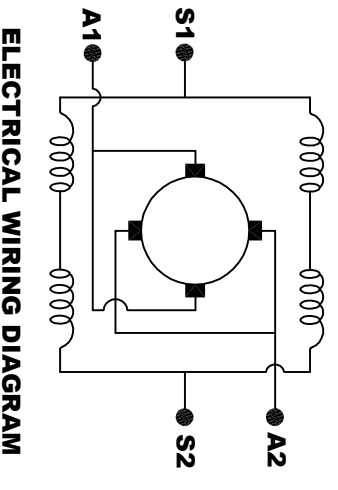


**TORQUE SPECIFICATION FOR  
POWER CABLE SECURING TOP NUTS  
5/16-18 UNC - 110 IN / LBS MAX**

<b>A2</b>		<b>D&amp;D MOTOR SYSTEMS INC.</b>		<b>A1</b>	
<b>S2</b>		<b>SYRACUSE N.Y.</b>		<b>S1</b>	
Model # 170 - 016 - 0002		Mfg. Date		Voltage	
XXXXXX	XXXX	CLASS H	36/48		
Serial #		Rating		MADE IN U.S.A.	



**MOTOR WEIGHT 54 LBS**  
**CLASS "H" INSULATION**  
**PERFORMANCE SPEC: 25**



**MOTOR WIRING CONNECTIONS:**  
**CW ROTATION DRIVE END**  
**CONNECT S2 & A1 TOGETHER**  
**CONNECT S1 TO BATTERY TERMINAL**  
**CCW ROTATION DRIVE END**  
**CONNECT A2 TO OTHER BATTERY TERMINAL**  
**SWITCH S1 & S2 CONNECTIONS**

THIS PRINT IS THE PROPERTY OF D&D MOTOR SYSTEMS INC.  
DO NOT SCALE  
WORK TO DIMENSIONS  
TOLERANCES UNLESS OTHERWISE SPECIFIED ARE AS FOLLOWS  
XX .01  
XXX .005  
.XX ROUGH CASTING .03  
HOLES .001 / +.006  
ANGLES 0.30"

<b>D &amp; D MOTOR SYSTEMS INC</b>		<b>MOTOR OUTLINE</b>	
SIZE	DRAWN DATE	RELEASE DATE	DWG NO. / PART NO.
B	6-16-05	10-13-07	170 - 016 - 0002
SCALE	STF	DRAWN BY	REV
		MJG	R5
			6-3-19