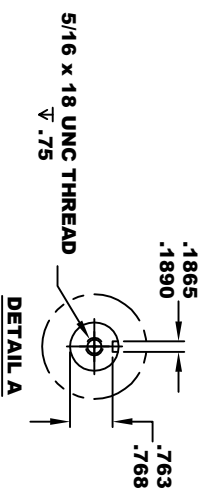
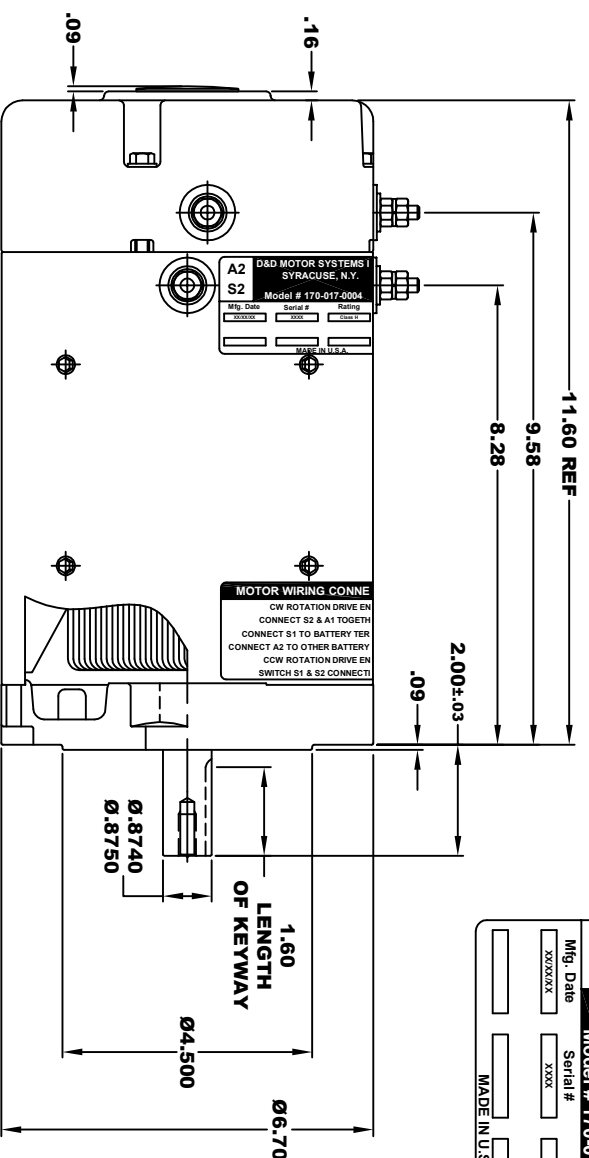
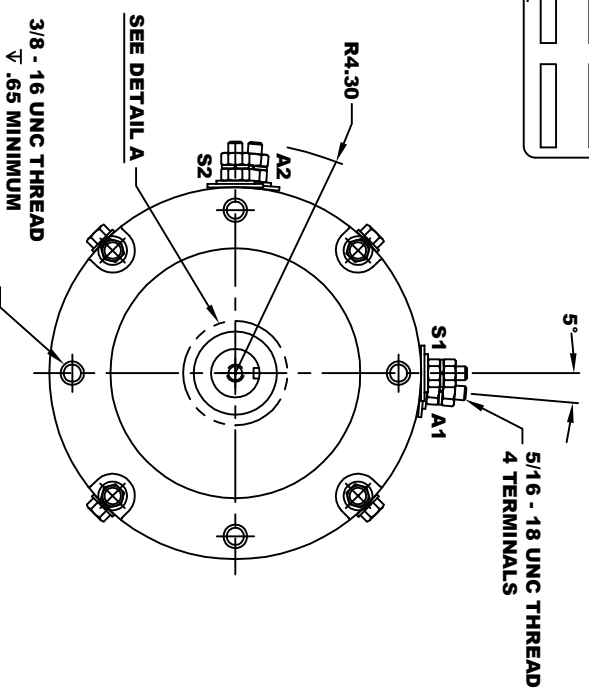


<b>D&amp;D MOTOR SYSTEMS, INC.</b>			
<b>SYRACUSE N.Y.</b>			
<b>A2</b>	<b>A1</b>		
<b>S2</b>	<b>S1</b>		
<b>Model # 170-017-0004</b>			
Mfg. Date	Serial #	Rating	Voltage
XXXXXX	XXXX	CLASSH	24V - 72V
MADE IN U.S.A.			

**TORQUE SPECIFICATION FOR  
POWER CABLE SECURING TOP NUTS**  
5/16-18 UNC - 110 IN / LBS MAX



**3/8 - 16 UNC THREAD**  
V .65 MINIMUM  
.03-.05 x 45° CHAMFER  
4 PLACES, ON A Ø5.875 B.C.



**MOTOR WEIGHT: 62 LBS**  
**CLASS "H" INSULATION**  
**PERFORMANCE SPEC: 21**

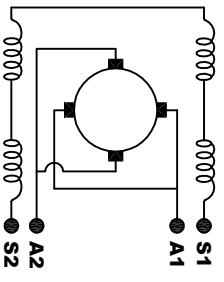
**D & D MOTOR SYSTEMS INC**

**MOTOR OUTLINE**

SIZE	DRAWN DATE	RELEASE DATE	DWG NO. / PART NO.	REV
B	7-20-09	1-16-24	170-017-0004	
SCALE	STF	DRAWN BY	MJG	REV DATE

THIS PRINT IS THE PROPERTY OF D&D MOTOR SYSTEMS INC.  
DO NOT SCALE  
WORK TO DIMENSIONS  
TOLERANCES UNLESS OTHERWISE SPECIFIED ARE AS FOLLOWS  
XX----- .01  
XXX----- .005  
XX ROUN GASTING ----- .03  
HOLES ----- .001 / +.006  
ANGLES ----- 0-30°

**MOTOR WIRING CONNECTIONS:**  
CW ROTATION DRIVE END  
CONNECT S2 & A1 TOGETHER  
CONNECT S1 TO BATTERY TERMINAL  
CONNECT A2 TO OTHER BATTERY TERMINAL  
CCW ROTATION DRIVE END  
SWITCH S1 & S2 CONNECTIONS



**ELECTRICAL WIRING DIAGRAM**