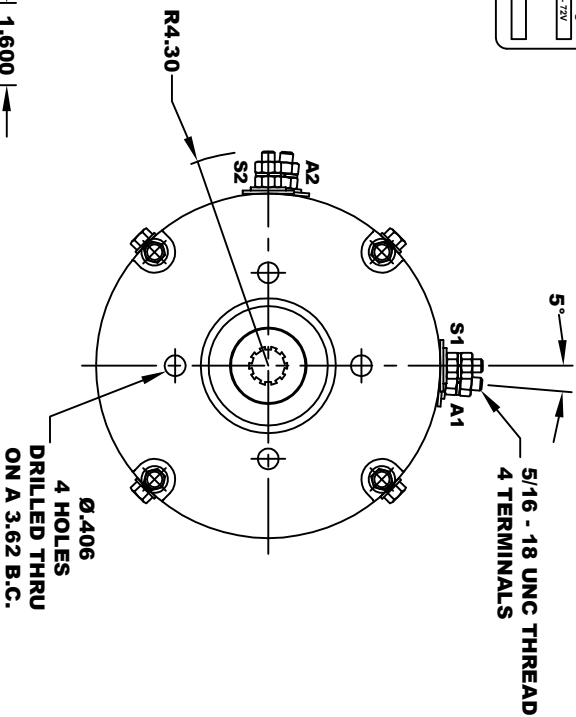
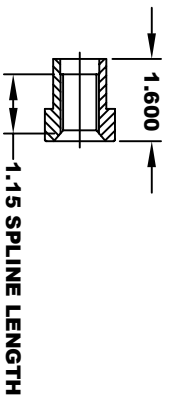
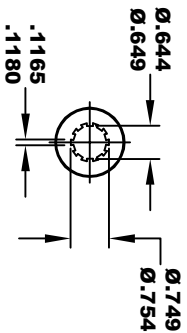
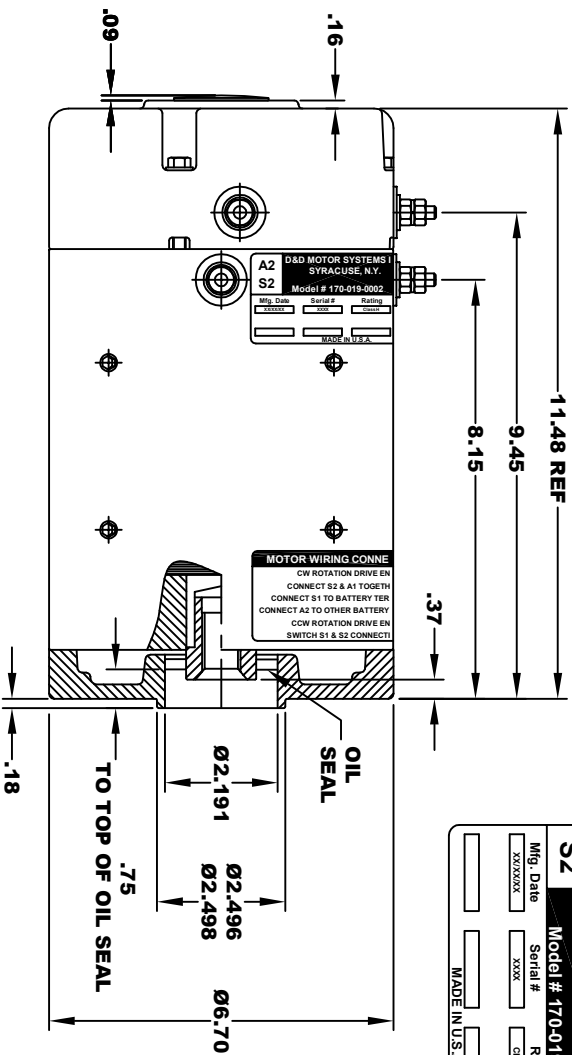


D&D MOTOR SYSTEMS INC.			
SYRACUSE N.Y.			
A2	S2	A1	S1
Model # 170-019-0002			
Mfg. Date	Serial #	Rating	Voltage
XXXXXX	XXXX	CLASS H	24V - 72V
MADE IN U.S.A.			



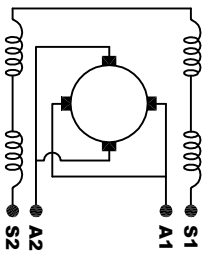
**TORQUE SPECIFICATION FOR
POWER CABLE SECURING TOP NUTS
5/16-18 UNC - 110 IN / LBS MAX**

**10 TOOTH
INTERNAL SPLINE
HARDNESS OF SPLINE
TO BE RC 46 - 53 (.02 DEPTH MIN)**

**MOTOR WEIGHT: 61 LBS
CLASS "H" INSULATION
PERFORMANCE SPEC: 21**

MOTOR WIRING CONNECTIONS:

- CW ROTATION DRIVE END**
- CONNECT S2 & A1 TOGETHER**
- CONNECT S1 TO OTHER BATTERY TERMINAL**
- CCW ROTATION DRIVE END**
- CONNECT A2 TO OTHER BATTERY TERMINAL**
- SWITCH S1 & S2 CONNECTIONS**



ELECTRICAL WIRING DIAGRAM

THIS PRINT IS THE PROPERTY OF D&D MOTOR SYSTEMS INC.
DO NOT SCALE
WORK TO DIMENSIONS
TOLERANCES UNLESS OTHERWISE SPECIFIED ARE AS FOLLOWS
XX .01
XXX .005
XX RROUGH CASTING .03
HOLES .001 / +.006
ANGLES .030°

D & D MOTOR SYSTEMS INC			
MOTOR OUTLINE			
SIZE	DRAWN DATE	RELEASE DATE	DWG NO. / PART NO.
B	10-10-02	2-15-24	170-019-0002
SCALE	STF	DRAWN BY	REV DATE
		MJG	ES-40