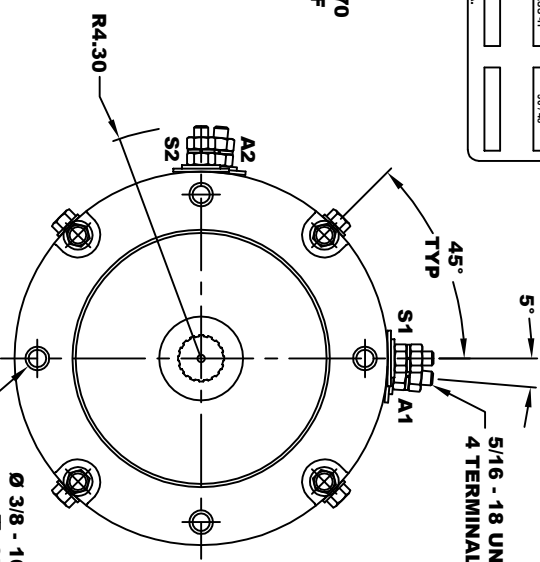
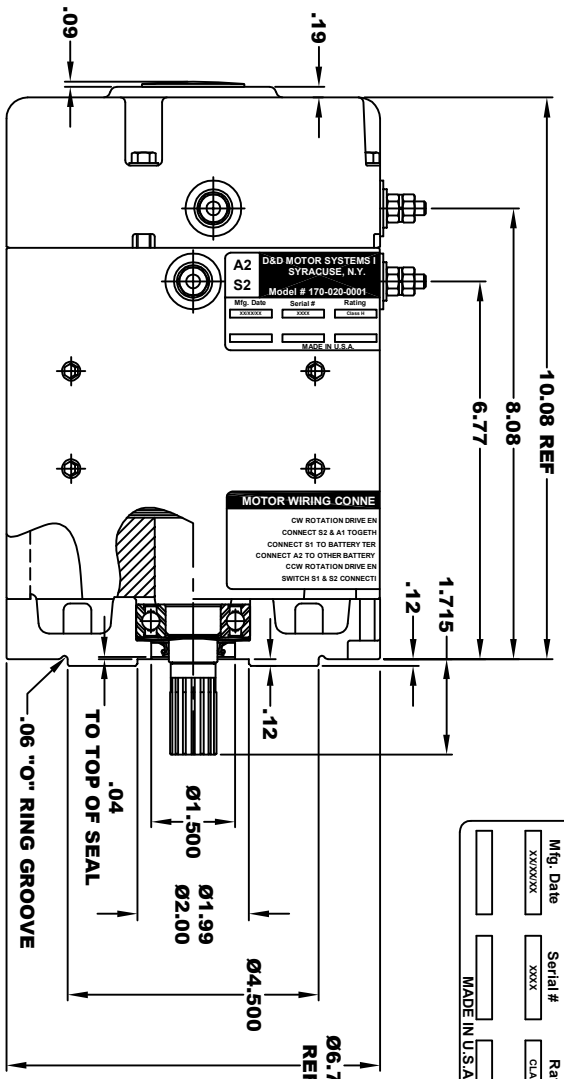


<b>D&amp;D MOTOR SYSTEMS INC.</b>			
<b>A2</b>	<b>SYRACUSE N.Y.</b>		<b>A1</b>
<b>S2</b>	<b>Model # 170-020-0001</b>		<b>S1</b>
Mfg. Date	Serial #	Rating	Voltage
XXXXXX	XXXX	CLASS -H	35 / 48
MADE IN U.S.A.			

**TORQUE SPECIFICATION FOR  
POWER CABLE SECURING TOP NUTS**  
5/16-18 UNC - 110 IN / LBS MAX



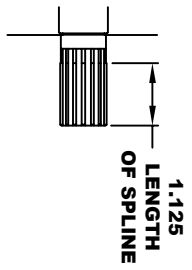
Ø 3/8 - 16 UNC THREAD  
T .65 MINIMUM  
BREAK THRU PERMISSIBLE  
.03-.05 x 45° CHAMFER  
4 PLACES, ON A Ø5.875 B. C.

**MOTOR WIRING CONNECTIONS:**  
CW ROTATION DRIVE END  
CONNECT S2 & A1 TOGETHER  
CONNECT S1 TO BATTERY TERMINAL  
CONNECT A2 TO OTHER BATTERY TERMINAL  
CCW ROTATION DRIVE END  
SWITCH S1 & S2 CONNECTIONS

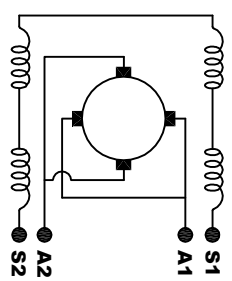
**D & D MOTOR SYSTEMS INC**

<b>EXTERNAL INVOLUTE SPLINE DATA</b>	
TYPE OF FIT	SIDE FIT
NUMBER OF TEETH	16
SPLINE PITCH	20 / 40
PRESSURE ANGLE	30°
BASE DIAMETER	.692 REF
PITCH DIAMETER	.800 REF
MAJOR DIAMETER (h11)	.850 - .800
FORM DIAMETER	.746
MINOR DIAMETER (h14)	.686 -

**MOTOR WEIGHT 49 LBS**  
**CLASS "H" INSULATION**  
**PERFORMANCE SPEC: 43**



**ELECTRICAL WIRING DIAGRAM**



THIS PRINT IS THE PROPERTY OF D&D MOTOR SYSTEMS INC.  
DO NOT SCALE  
WORK TO DIMENSIONS  
TOLERANCES UNLESS OTHERWISE SPECIFIED ARE AS FOLLOWS  
XX .01  
XXX .005  
XXX RUGH CASTING .03  
HOLES .001 / +.006  
ANGLES 0-30°

**MOTOR OUTLINE**

SIZE	DRAWN DATE	RELEASE DATE	DRG NO.	PART NO.	REV
B	9-29-17	1-26-23	170-020-0001		
SCALE	STF	DRAWN BY	MJG	ES-85A-43	REV DATE