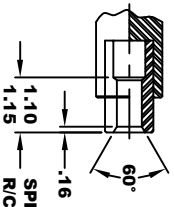
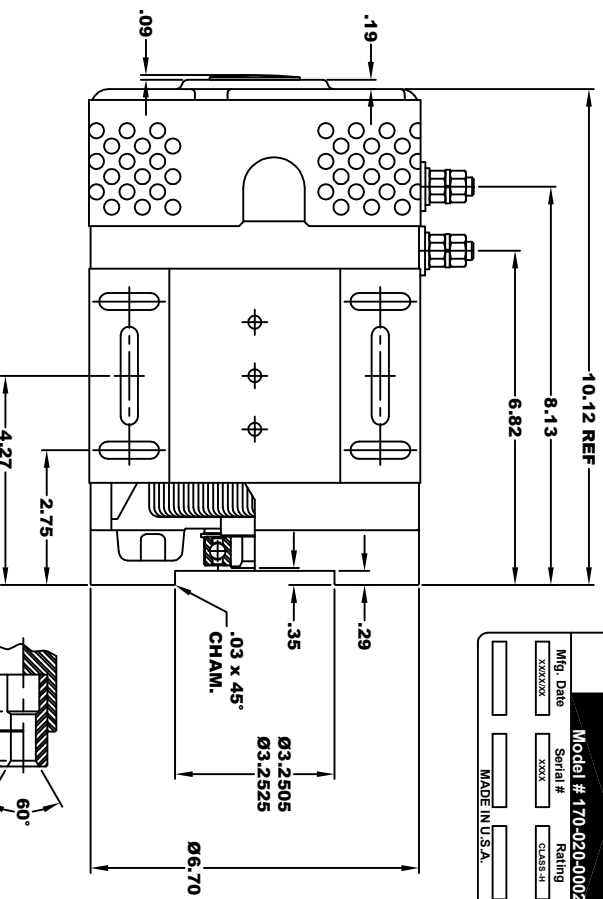


D&D MOTOR SYSTEMS INC.
SYRACUSE N.Y.

Model # 170-020-0002

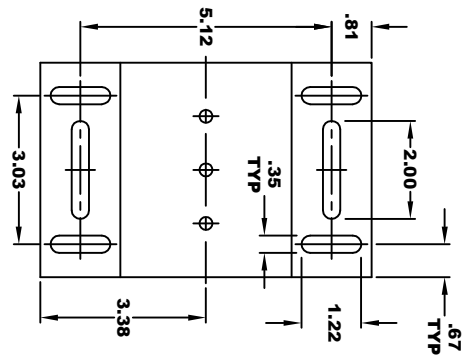
Mfg. Date	Serial #	Rating	Voltage
XXXXXX	XXXX	CLASS-H	240 / 270
		MADE IN U.S.A.	

**TORQUE SPECIFICATION FOR
POWER CABLE SECURING TOP NUTS**
3/8-16 UNC - 140 IN / LBS MAX



SPLINE HARDNESS
R/C 46 - 52

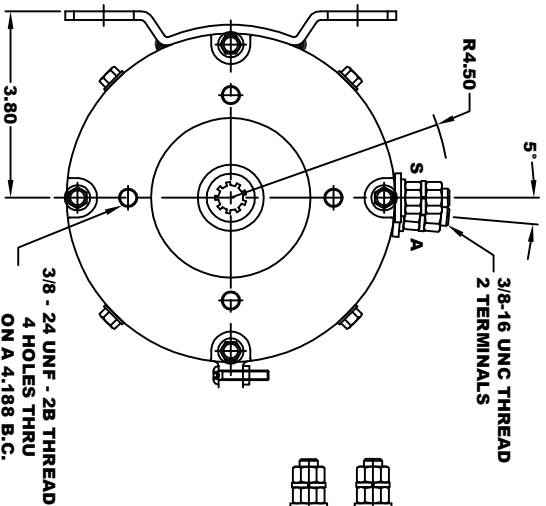
INTERNAL INVOLUTE SPLINE SPECIFICATION
FLAT ROOT SIDE FIT (PER A.N.S.I. B92.1 CLASS 5)



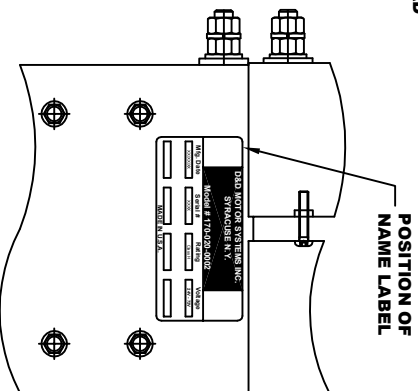
NO. OF TEETH — 9
SPLINE PITCH — 16 / 32
PRESSURE ANGLE — 30°
BASE Ø — .4871 REF
PITCH Ø — .5625 REF
MAJOR Ø — .651
FORM Ø — .629
MINOR Ø — .509 - .514

CIRCULAR SPACE WIDTH
MAX ACTUAL — .1008
MIN EFFECTIVE — .0982
MAX DIMENSION BETWEEN
TWO PINS — .3972
PIN Ø — .1080

Ø	.010	A
I	.010	B



3/8 - 24 UNF - 2B THREAD
4 HOLES THRU
ON A 4.188 B.C.
WITH A .03 x 45° CHAM

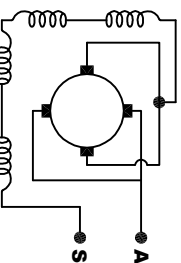


**POSITION OF
NAME LABEL**

MOTOR WEIGHT: 52 LBS
CLASS "H" INSULATION
PERFORMANCE SPEC: 43

MOTOR WIRING CONNECTIONS:
CGW ROTATION DRIVE END
CONNECT ONE POWER CABLE TO TERMINAL A
CONNECT THE OTHER POWER CABLE TO TERMINAL S

ELECTRICAL WIRING DIAGRAM



THIS PRINT IS THE PROPERTY OF D&D MOTOR SYSTEMS INC.
DO NOT SCALE
WORK TO DIMENSIONS
TOLERANCES UNLESS OTHERWISE SPECIFIED ARE AS FOLLOWS

XX	.01
XXX	.005
XX ROUGH CASTING	.03
HOLES	.001 / +.006
ANGLES	0-30°

D & D MOTOR SYSTEMS INC

MOTOR OUTLINE

SIZE	DRAWN DATE	RELEASE DATE	DWG NO. / PART NO.	REV
B	10-15-13	2-15-24	170-020-0002	
SCALE	STF	DRAWN BY	MJG	ES-27C-43
				REV DATE