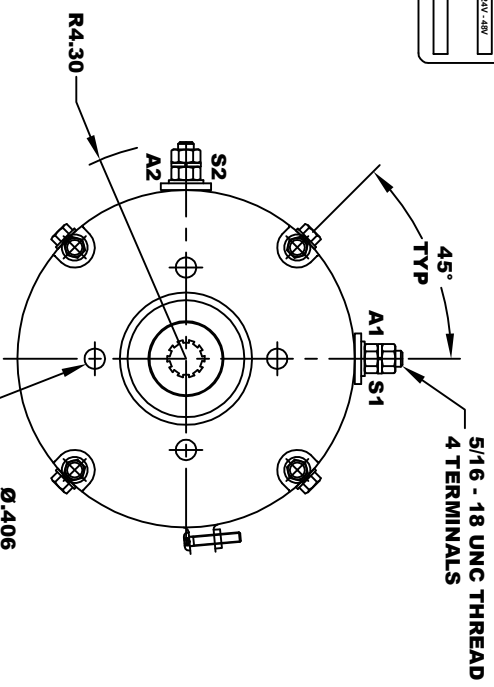
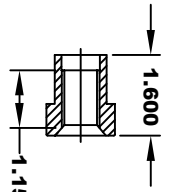
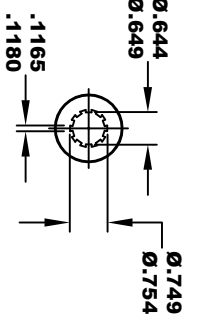


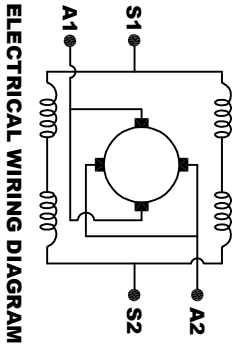
D&D MOTOR SYSTEMS INC. SYRACUSE N.Y.			
Model # 170-021-0001A			
Mfg. Date	Serial #	Rating	Voltage
XXXXXX	XXXX	CLASSIFIED	24V - 48V
MADE IN U.S.A.			



**TORQUE SPECIFICATION FOR  
POWER CABLE SECURING TOP NUTS**  
5/16-18 UNC - 110 IN / LBS MAX

**10 TOOTH  
INTERNAL SPLINE  
HARDNESS OF SPLINE  
TO BE R/C 46 - 53 (.02 DEPTH MIN)**

**MOTOR WEIGHT: 61 LBS  
CLASS "H" INSULATION  
PERFORMANCE SPEC: 56**



**MOTOR WIRING CONNECTIONS:**  
**CW ROTATION DRIVE END**  
 CONNECT S2 & A1 TOGETHER  
 CONNECT S1 TO BATTERY TERMINAL  
**CCW ROTATION DRIVE END**  
 CONNECT A2 TO OTHER BATTERY TERMINAL  
 SWITCH S1 & S2 CONNECTIONS

THIS PRINT IS THE PROPERTY OF D&D MOTOR SYSTEMS INC.  
 DO NOT SCALE  
 WORK TO DIMENSIONS  
 TOLERANCES UNLESS OTHERWISE SPECIFIED ARE AS FOLLOWS  
 .XX .01  
 .XXX .005  
 .XX ROUGH CASTING .03  
 HOLES .001 / +.006  
 ANGLES 0-30°

D & D MOTOR SYSTEMS INC			
<b>MOTOR OUTLINE</b>			
SIZE	DRAWN DATE	RELEASE DATE	DWG NO. / PART NO.
B	11-21-06	2-15-24	170-021-0001A
SCALE	DRAWN BY	M/JG	ES-40D-56
STF			REV DATE