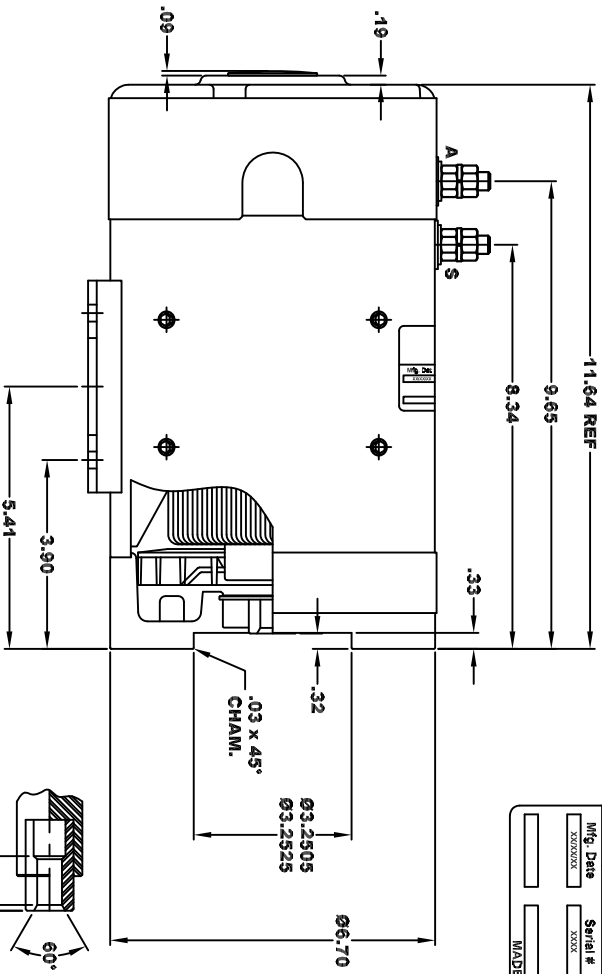


D&D MOTOR SYSTEMS INC.
SYRACUSE N.Y.
 Model # 170-300-0001

Mfg Date	Serial #	Rating	Voltage
XXXXXX	XXXX	CLASS	XX
MADE IN U.S.A.			

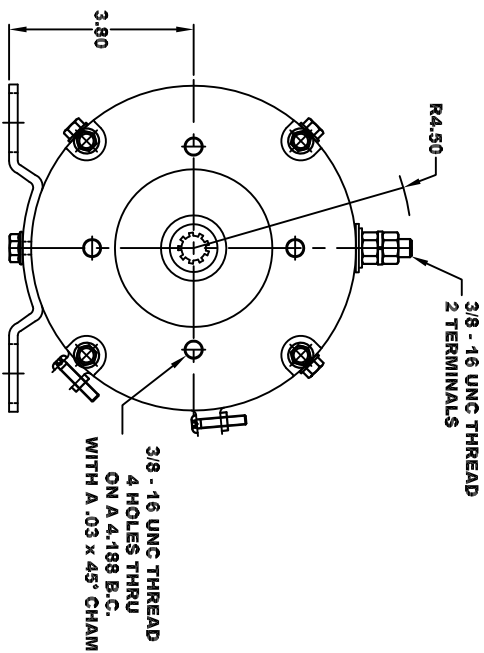
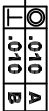
**TORQUE SPECIFICATION FOR
 POWER CABLE SECURING TOP NUTS**
 3/8 - 16 UNC - 140 IN / LBS MAX



SPLINE HARDNESS
 RC 46 - 52

INTERNAL INVOLUTE SPLINE SPECIFICATION
 FLAT ROOT SIDE FIT (PER A.S.I. B92.1 CLASS 5)

- NO. OF TEETH _____ 9
 - SPLINE PITCH _____ 16 / 32
 - PRESSURE ANGLE _____ 30°
 - BASE Ø _____ .4871 REF
 - PITCH Ø _____ .5625 REF
 - MAJOR Ø _____ .651
 - FORM Ø _____ .629
 - MINOR Ø _____ .509 - .514
- CIRCULAR SPACE WIDTH**
 MAX ACTUAL _____ .1008
 MIN EFFECTIVE _____ .0982
 MAX DIMENSION BETWEEN TWO PINS _____ .3972
 PIN Ø _____ .1080



MOTOR WEIGHT: 60 LBS
 CLASS "H" INSULATION
 PERFORMANCE SPEC: 91

MOTOR WIRING CONNECTIONS:
 CCW ROTATION DRIVE END
 CONNECT ONE POWER CABLE TO TERMINAL A
 CONNECT THE OTHER POWER CABLE TO TERMINAL S

D & D MOTOR SYSTEMS INC

MOTOR OUTLINE

THIS PRINT IS THE PROPERTY OF D&D MOTOR SYSTEMS INC.
 DO NOT SCALE
 WORK TO DIMENSIONS
 TOLERANCES UNLESS OTHERWISE SPECIFIED ARE AS FOLLOWS

XX	.01
XXX	.005
XX ROUGH CASTING	.03
HOLES	.001 / +.008
ANGLES	0°30'

SHEET DRAWN DATE	RELEASE DATE	DWG NO. / PART NO.	REV
B 11-11-15	8-13-24	170-300-0001	
SCALE	DRAWN BY	REV DATE	
STF	MJG	ES-169A-91	