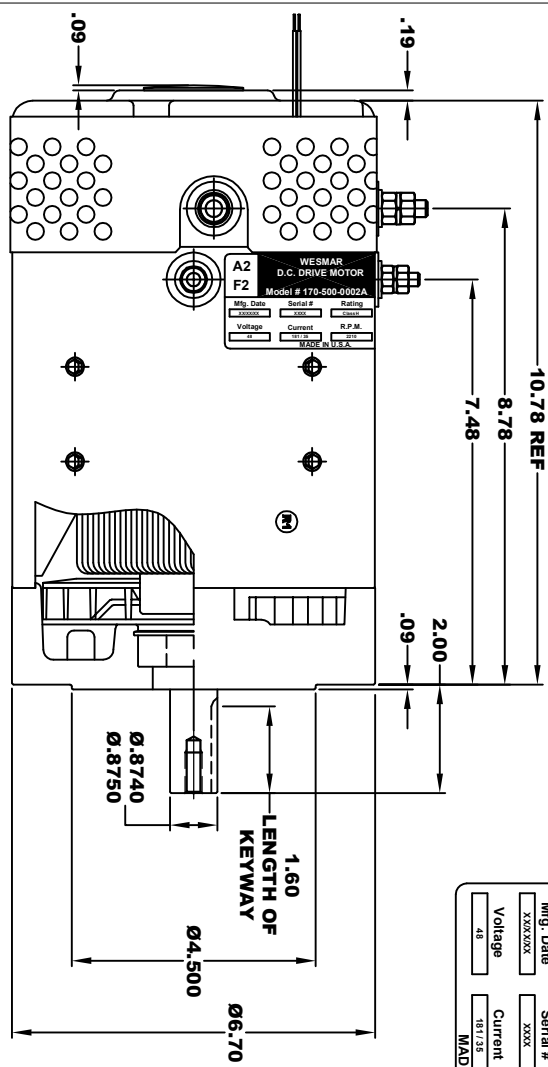


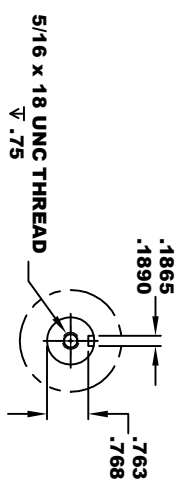
A2		D.C. DRIVE MOTOR		A1	
F2		Model # 170-500-0002A		F1	
Mfg. Date	Serial #	Rating	Duty		
XXXXXX	XXXX	Class H	S2, 8 MIN		
Voltage	Current	R.P.M.	H.P.		
48	181.73	2210	3.25		
MADE IN U.S.A.					

**TORQUE SPECIFICATION FOR
POWER CABLE SECURING TOP NUTS**
 5/16-18 UNC (A1 / A2) - 110 IN / LBS MAX
 1/4-20 UNC (F1 / F2) - 50 IN / LBS MAX



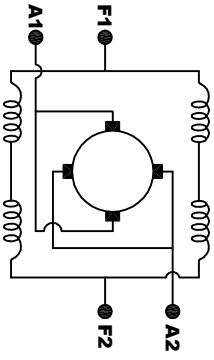
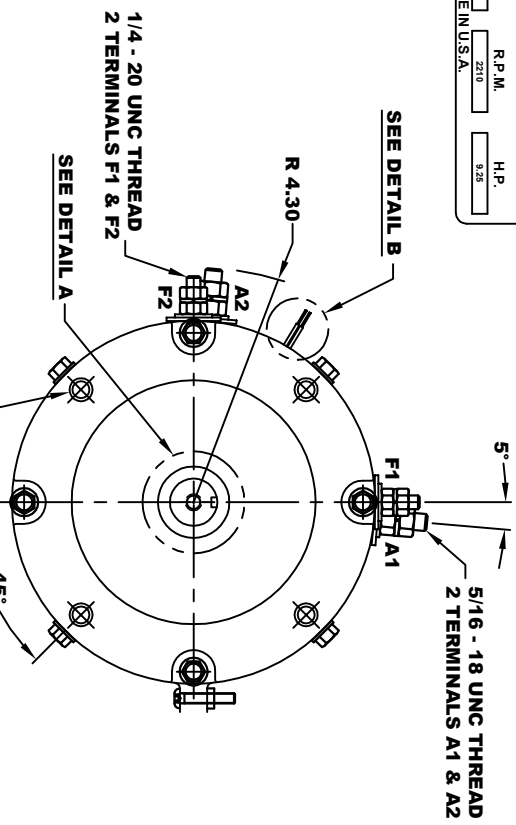
THERMAL PROTECTOR ELECTRICAL SPECIFICATION:
 MAX. DC OPERATING VOLTAGE: 60 VOLTS
 140° C NORMALLY OPEN SWITCH

DETAIL B



DETAIL A

MOTOR WEIGHT: 50 LBS
CLASS "H" INSULATION
PERFORMANCE SPEC: 4



ELECTRICAL WIRING DIAGRAM

MOTOR WIRING CONNECTIONS:
CW ROTATION DRIVE END
 CONNECT A1 & F1 TO ONE BATTERY TERMINAL
CCW ROTATION DRIVE END
 SWITCH F1 & F2 CONNECTIONS

THIS PRINT IS THE PROPERTY OF D&D MOTOR SYSTEMS INC.
 DO NOT SCALE
 WORK TO DIMENSIONS
 TOLERANCES UNLESS OTHERWISE SPECIFIED ARE AS FOLLOWS
 .XX _____ .01
 .XXX _____ .005
 .XXX ROUGH CASTING _____ .03
 HOLES _____ .001 / +.006
 ANGLES _____ 0°-30°

D & D MOTOR SYSTEMS INC					
MOTOR OUTLINE					
SIZE	DATE	RELEASE DATE	DWG NO.	PART NO.	REV
B	11-12-19	12-05-23	170-500-0002A		
SCALE	STF	DRAWN BY	MJG	ES-10L-4	REV DATE