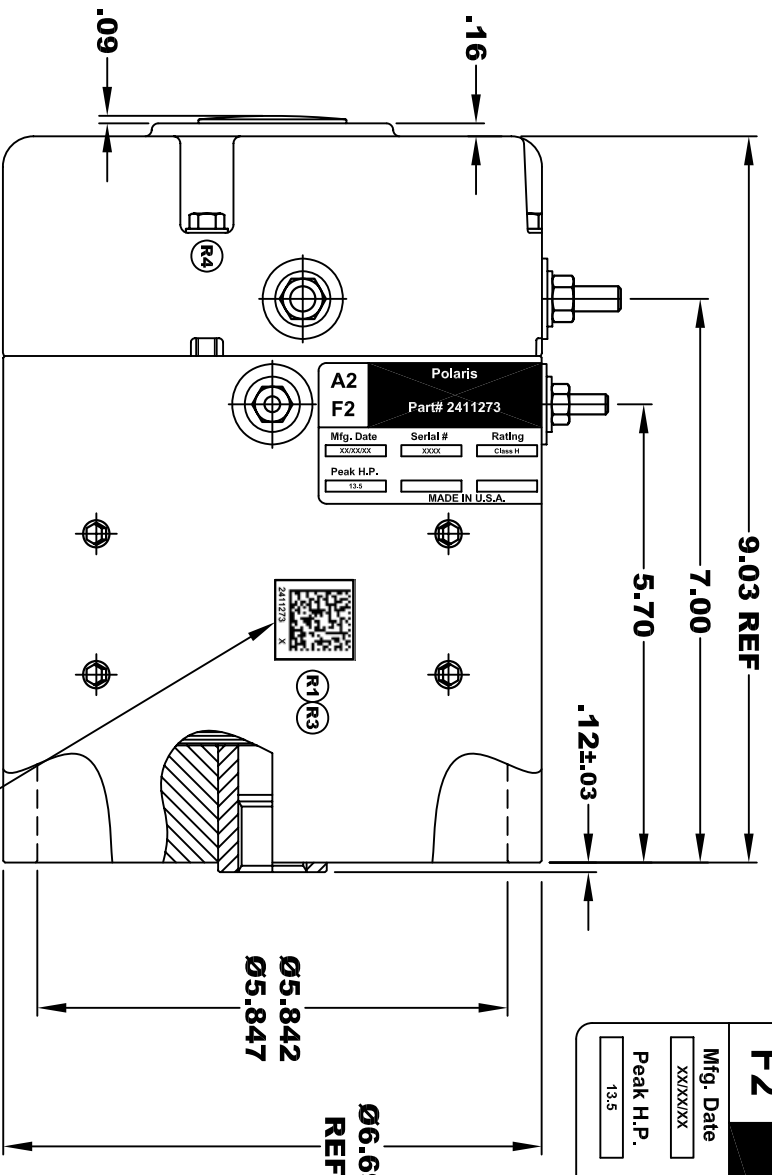
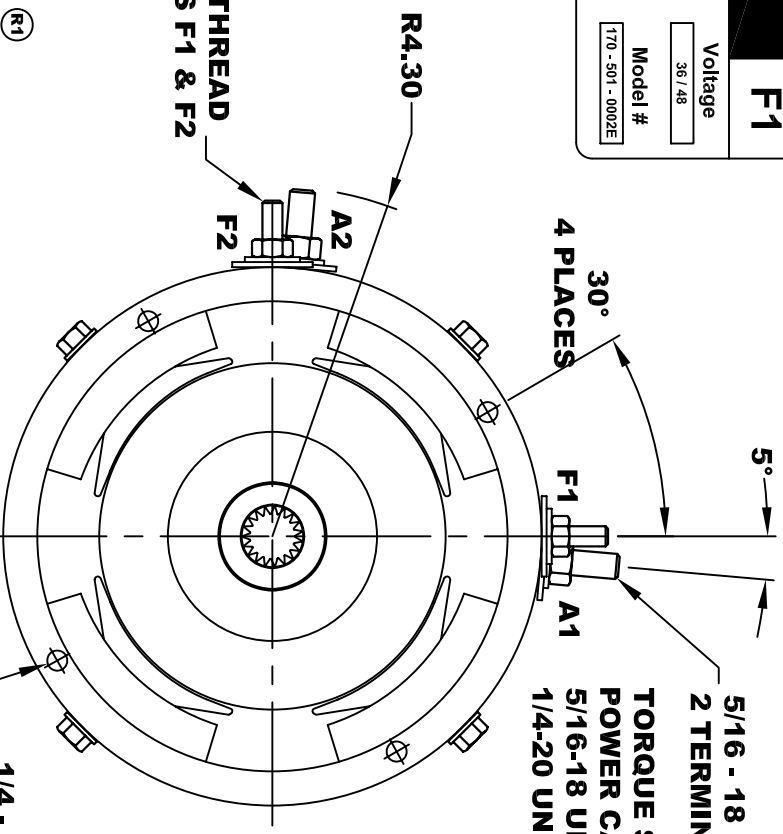


<b>Polaris</b>			
<b>A2</b>	<b>A1</b>		
<b>Part # 2411273</b>			
Mfg. Date	Serial #	Rating	Voltage
XXXXXX	XXXX	Class H	36 / 48
Peak H.P.	MADE IN U.S.A.		Model #
13.5			170 - 501 - 0002E



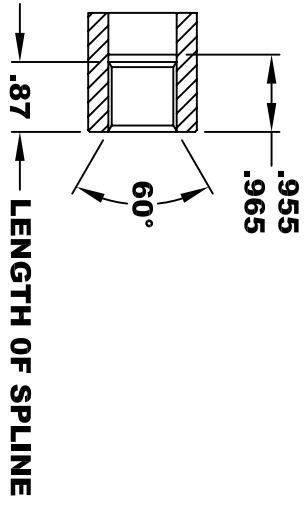
1/4 - 20 UNC THREAD  
2 TERMINALS F1 & F2



**NOTE:**  
2D BAR CODE FORMAT IS TO FOLLOW THE POLARIS  
2D DIRECT COMPONENT MARKING SPECIFICATIONS

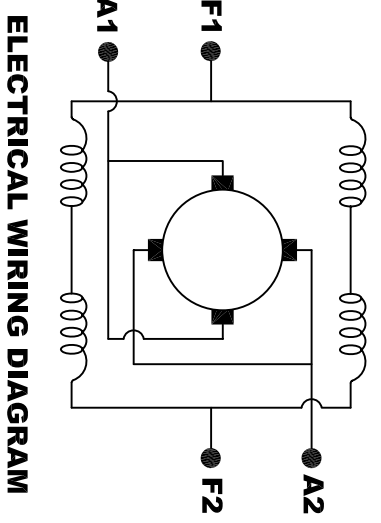
**INTERNAL INVOLUTE SPLINE SPECIFICATION  
CLASS 5 FILLET ROOT SIDE FIT (PER A.N.S.I. B92.1)**

- NO. OF TEETH \_\_\_\_\_ 19
- SPLINE PITCH \_\_\_\_\_ 24 / 48
- PRESSURE ANGLE \_\_\_\_\_ 45°
- BASE Ø \_\_\_\_\_ .5597 REF
- PITCH Ø \_\_\_\_\_ .7916 REF
- MAJOR Ø \_\_\_\_\_ .850 - .859
- FORM Ø \_\_\_\_\_ .835
- MINOR Ø \_\_\_\_\_ .767 - .772
- CIRCULAR SPACE WIDTH \_\_\_\_\_ .0764
- EFFECTIVE SPACE WIDTH \_\_\_\_\_ .0738
- MAX. DIMENSION BETWEEN \_\_\_\_\_
- TWO PINS \_\_\_\_\_ .6714
- PIN Ø \_\_\_\_\_ .0800
- SPLINE HARDNESS TO BE R/C 26-34



**MOTOR WEIGHT: 46 LBS**  
**CLASS "H" INSULATION**  
**PERFORMANCE SPEC: 5**

CUSTOMER PART # \_\_\_\_\_  
MOTOR SERIAL # \_\_\_\_\_



**MOTOR WIRING CONNECTIONS:**  
**CW ROTATION DRIVE END**  
CONNECT A1 & F1 TO ONE BATTERY TERMINAL  
CONNECT A2 & F2 TO OTHER BATTERY TERMINAL  
**CCW ROTATION DRIVE END**  
SWITCH F1 & F2 CONNECTIONS

THIS PRINT IS THE PROPERTY OF D&D MOTOR SYSTEMS INC.  
DO NOT SCALE  
WORK TO DIMENSIONS  
TOLERANCES UNLESS OTHERWISE SPECIFIED ARE AS FOLLOWS  
.XX \_\_\_\_\_ .01  
.XXX \_\_\_\_\_ .005  
.XX ROUGH CASTING \_\_\_\_\_ .03  
HOLES \_\_\_\_\_ -.001 / +.006  
ANGLES \_\_\_\_\_ 0°30"

<b>D &amp; D MOTOR SYSTEMS INC</b>			
<b>MOTOR OUTLINE</b>			
SIZE	DRAWN DATE	RELEASE DATE	DWG NO. / PART NO.
B	1-26-09	1-26-09	170 - 501 - 0002E
SCALE	STF	DRAWN BY	REV DATE
		MJG	12-1-10