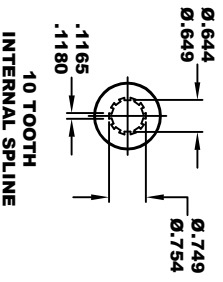
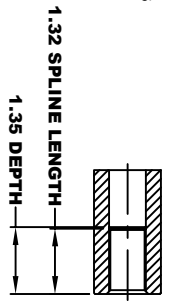
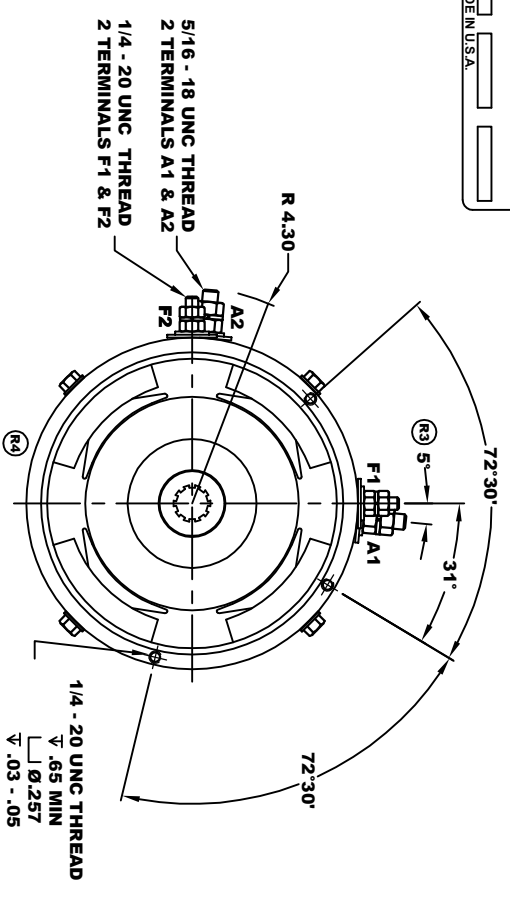
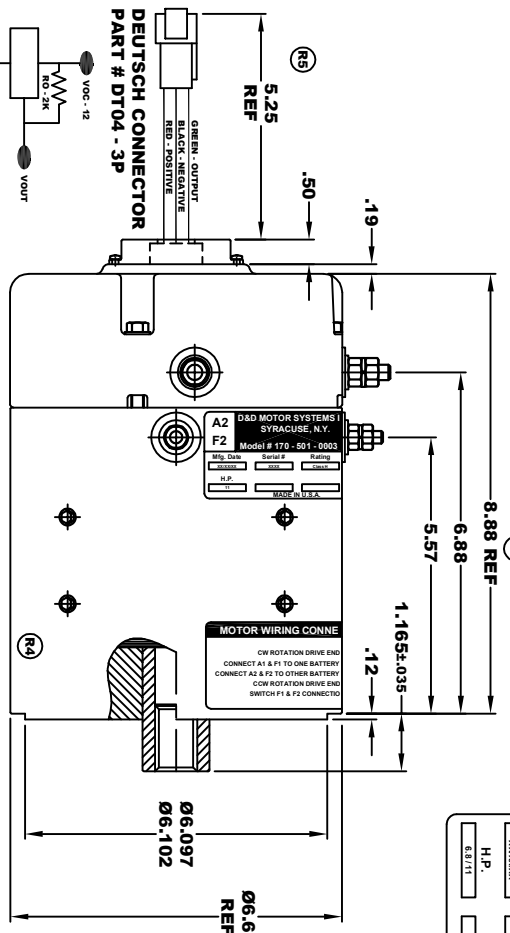


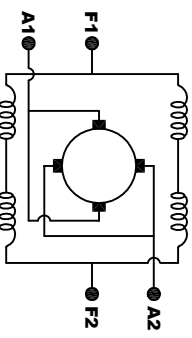
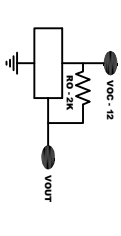
D&D MOTOR SYSTEMS INC.			
SYRACUSE N.Y.			
A2	A1	F1	F2
Model # 170 - 501 - 0003			
Mfg. Date	Serial #	Rating	Voltage
XXXXXX	XXXX	0.88 H	38/48
H.P.	MADE IN U.S.A.		
0.88 H			

**TORQUE SPECIFICATION FOR
POWER CABLE SECURING TOP NUTS**
 5/16-18 UNC (A1 / A2) - 110 IN / LBS MAX
 1/4-20 UNC (F1 / F2) - 50 IN / LBS MAX



**MOTOR WEIGHT 46 LBS
CLASS "H" INSULATION
PERFORMANCE SPEC: 5**

- SPEED SENSOR ELECTRICAL SPECIFICATION:**
- 4.5V TO 24V OPERATING VOLTAGE
 - 20° C TO 85° C OPERATING TEMPERATURE
 - CURRENT SINKING UP TO 25ma
 - AN EXTERNAL OUTPUT PULL UP RESISTOR IS REQUIRED
 - SENSOR IS DESIGNED TO OPERATE WITH 4 N/S POLEPAIRS
 - THE OPERATIONAL DISTANCE BETWEEN THE MAGNET AND THE HOUSING, INCLUDING ANY RUNOUT SHOULD NOT EXCEED .030 INCHES



ELECTRICAL WIRING DIAGRAM

MOTOR WIRING CONNECTIONS:
CW ROTATION DRIVE END
 CONNECT A1 & F1 TO ONE BATTERY TERMINAL
 CONNECT A2 & F2 TO OTHER BATTERY TERMINAL
CCW ROTATION DRIVE END
 SWITCH F1 & F2 CONNECTIONS

THIS PRINT IS THE PROPERTY OF D&D MOTOR SYSTEMS INC.
 DO NOT SCALE
 WORK TO DIMENSIONS
 TOLERANCES UNLESS OTHERWISE SPECIFIED ARE AS FOLLOWS
 .XX .01
 .XXX .005
 .XX ROUGH CASTING .03
 HOLES .001 / +.006
 ANGLES .030°

D & D MOTOR SYSTEMS INC			
MOTOR OUTLINE			
SIZE	DRAWN DATE	RELEASE DATE	DWG NO. / PART NO.
B	12-6-01	6-19-02	170 - 501 - 0003
SCALE	STF	DRAWN BY	REV DATE
		MJG	ES-8 8-28-07