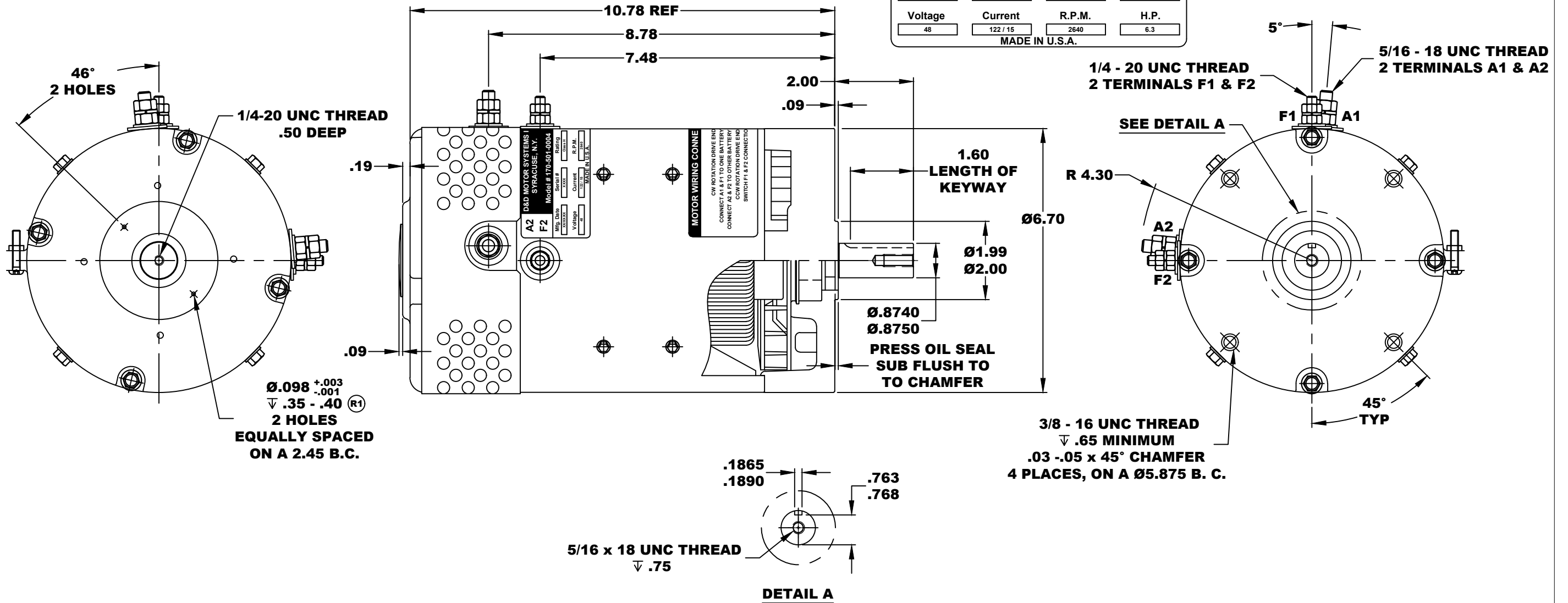
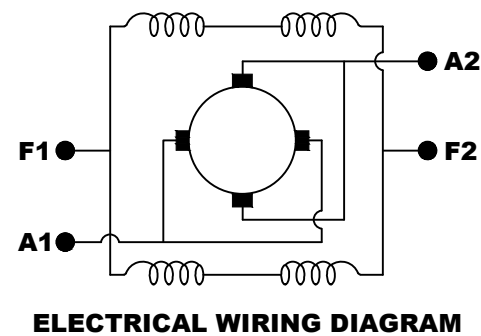


A2		D&D MOTOR SYSTEMS INC.		A1	
F2		SYRACUSE N.Y.		F1	
Model # 170-501-0004					
Mfg. Date	Serial #	Rating	Duty		
XX/XX/XX	XXXX	CLASS -H	CONTINUOUS		
Voltage	Current	R.P.M.	H.P.		
48	122 / 15	2640	6.3		
MADE IN U.S.A.					

**TORQUE SPECIFICATION FOR
POWER CABLE SECURING TOP NUTS**
5/16-18 UNC (A1 / A2) - 110 IN / LBS MAX
1/4-20 UNC (F1 / F2) - 50 IN / LBS MAX



MOTOR WEIGHT: 50 LBS
CLASS "H" INSULATION
PERFORMANCE SPEC: 5 / K-254



MOTOR WIRING CONNECTIONS:
CW ROTATION DRIVE END
CONNECT A1 & F1 TO ONE BATTERY TERMINAL
CONNECT A2 & F2 TO OTHER BATTERY TERMINAL
CCW ROTATION DRIVE END
SWITCH F1 & F2 CONNECTIONS

THIS PRINT IS THE PROPERTY OF D&D MOTOR SYSTEMS INC.

DO NOT SCALE
WORK TO DIMENSIONS

TOLERANCES UNLESS OTHERWISE SPECIFIED ARE AS FOLLOWS

.XX _____ .01
 .XXX _____ .005
 .XX ROUGH CASTING _____ .03

HOLES _____ $-.001 / +.006$
 ANGLES _____ 0°30"

D & D MOTOR SYSTEMS INC

MOTOR OUTLINE

SIZE	DRAWN DATE	RELEASE DATE	DWG NO. / PART NO.	REV
B	4-15-03	5-10-05	170 - 501 - 0004	R1
SCALE	DRAWN BY	REV DATE		
STF	MJG	8-28-08	ES-10F	