

Ⓜ *NOTE: Ⓜ
 APPLY ONE DROP OF
 ITEM # 14 TO THE
 THREADS OF HFAS - 6000
 (ITEM # 12)

D&D MOTOR SYSTEMS INC.
SYRACUSE N.Y.

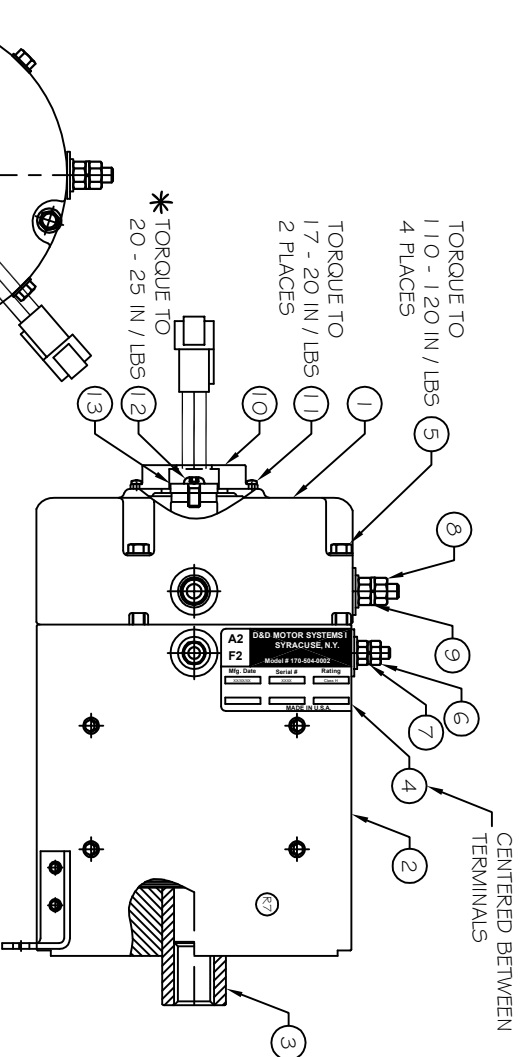
A2 **A1**
F2 **F1**

Model # 170-504-0002

Mfg Date: Serial #: Rating: Voltage:
 XXXXX XXXX CLASSIT XX

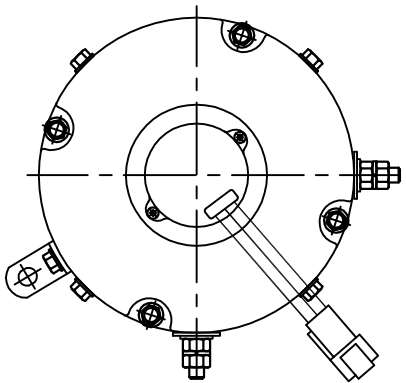
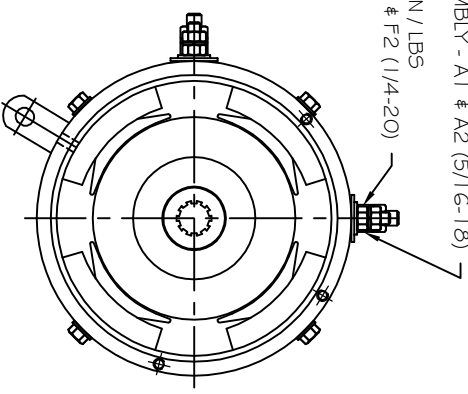
MADE IN U.S.A.

ITEM #	PART #	QUANTITY	PART DESCRIPTION
Ⓜ	1 CEHA170 - 0001	1	COMMUTATOR END HEAD ASSEMBLY
2	FFAR170-0018D	1	FRAME & FIELD ASSEMBLY
3	ARNA170 - 0012A	1	ARMATURE ASSEMBLY
Ⓜ	4 NMLB - 3007	1	NAME LABEL
5	HFAS - 3001	4	SCREW
6	HNUT - 1000	2	NUT (1/4-20)
7	HMS - 2000	2	LOCK WASHER
8	HNUT - 1001	2	NUT (5/16-18)
9	HMS - 2001	2	LOCK WASHER
10	SPOS - 0002	1	SPEED SENSOR
11	HFAS - 5000	2	SCREW
12	HFAS - 6000	1	SCREW
13	MAGT - 1004	1	MAGNET
Ⓜ	14 LOCT - 0001	1	LOC - TITE



CENTERED BETWEEN
 TERMINALS

TORQUE BOTTOM NUT TO 120 - 140 IN / LBS
 2 PLACES PRIOR TO ASSEMBLY - A1 & A2 (5/16-18)
 TORQUE BOTTOM NUT TO 50 - 70 IN / LBS
 2 PLACES PRIOR TO ASSEMBLY - F1 & F2 (1/4-20)



THIS PRINT IS THE PROPERTY OF D&D MOTOR SYSTEMS, INC.
 DO NOT SCALE
 WORK TO DIMENSIONS
 TOLERANCES UNLESS OTHERWISE SPECIFIED ARE AS FOLLOWS

XX _____ .01
 XXX _____ .005
 XX ROUGH CASTING _____ .03
 HOLES _____ -.001 / +.006
 ANGLES _____ 0°30'

D&D MOTOR SYSTEMS INC.

MOTOR ASSEMBLY

SIZE	DRAWN DATE	RELEASE DATE	DWG NO. / PART NO.	REV
B	2-5-04	2-24-23	170-504-0002	R7
SCALE	STF	DRAWN BY	MJG	ES-65A-38
				REV DATE 3-8-13