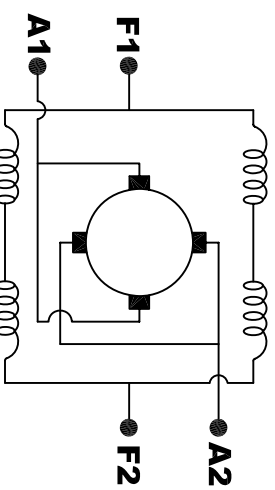
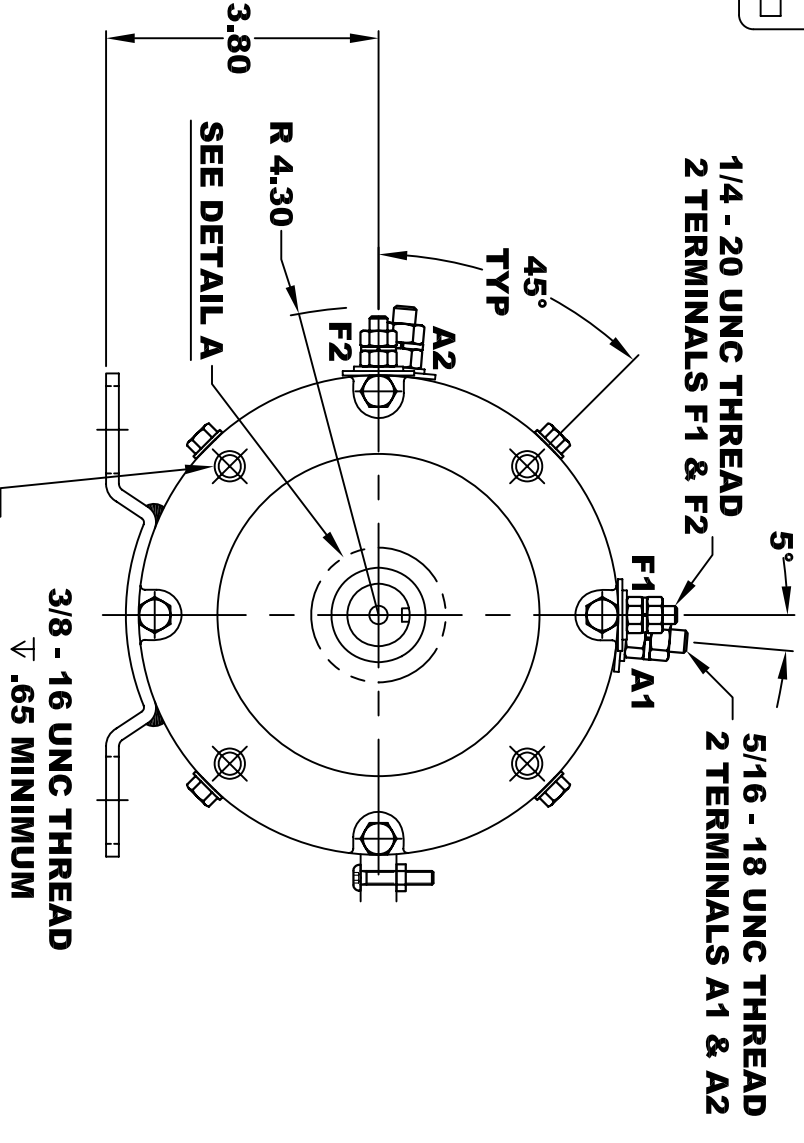


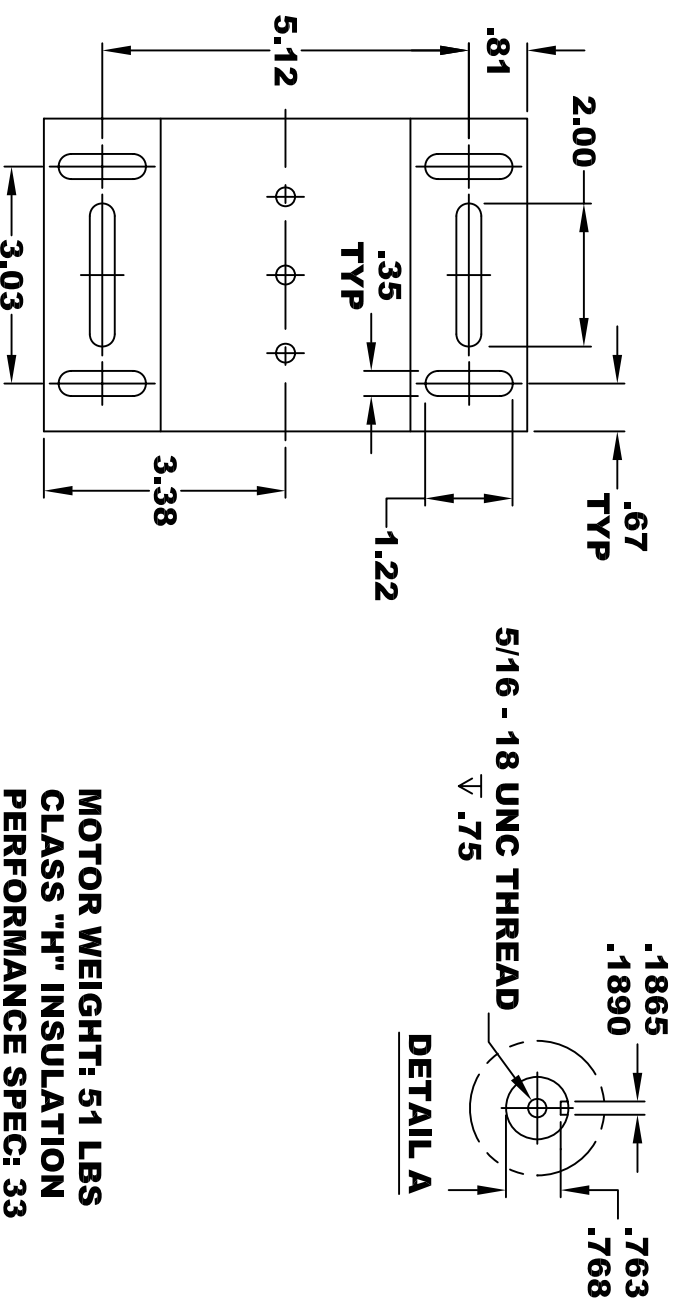
|                                 |                                   |           |         |           |
|---------------------------------|-----------------------------------|-----------|---------|-----------|
| <b>A2</b>                       | <b>D&amp;D MOTOR SYSTEMS INC.</b> |           |         | <b>A1</b> |
| <b>F2</b>                       | <b>SYRACUSE N.Y.</b>              |           |         | <b>F1</b> |
| <b>Model # 170 - 505 - 0003</b> |                                   |           |         |           |
| Mfg. Date                       | Serial #                          | Rating    | Voltage |           |
| XXXXXX                          | XXXX                              | CLASS -I- | 48      |           |
| MADE IN U.S.A.                  |                                   |           |         |           |

**TORQUE SPECIFICATION FOR  
POWER CABLE SECURING TOP NUTS**  
**5/16-18 UNC (A1 / A2) - 110 IN / LBS MAX**  
**1/4-20 UNC (F1 / F2) - 50 IN / LBS MAX**



**ELECTRICAL WIRING DIAGRAM**

**MOTOR WIRING CONNECTIONS:**  
**CW ROTATION DRIVE END**  
**CONNECT A1 & F1 TO ONE BATTERY TERMINAL**  
**CONNECT A2 & F2 TO OTHER BATTERY TERMINAL**  
**CCW ROTATION DRIVE END**  
**SWITCH F1 & F2 CONNECTIONS**



**MOTOR WEIGHT: 51 LBS**  
**CLASS "H" INSULATION**  
**PERFORMANCE SPEC: 33**

THIS PRINT IS THE PROPERTY OF D&D MOTOR SYSTEMS INC.  
 DO NOT SCALE  
 WORK TO DIMENSIONS  
 TOLERANCES UNLESS OTHERWISE SPECIFIED ARE AS FOLLOWS  
 .XX \_\_\_\_\_ .01  
 .XXX \_\_\_\_\_ .005  
 .XX ROUGH CASTING \_\_\_\_\_ .03  
 HOLES \_\_\_\_\_ -.001 / +.006  
 ANGLES \_\_\_\_\_ 0°30"

|                                    |            |                      |                    |
|------------------------------------|------------|----------------------|--------------------|
| <b>D &amp; D MOTOR SYSTEMS INC</b> |            | <b>MOTOR OUTLINE</b> |                    |
| SIZE                               | DRAWN DATE | RELEASE DATE         | DWG NO. / PART NO. |
| B                                  | 10-5-04    | 12-28-05             | 170 - 505 - 0003   |
| SCALE                              | STF        | DRAWN BY             | REV DATE           |
|                                    |            | MJG                  | ES-101A-33         |