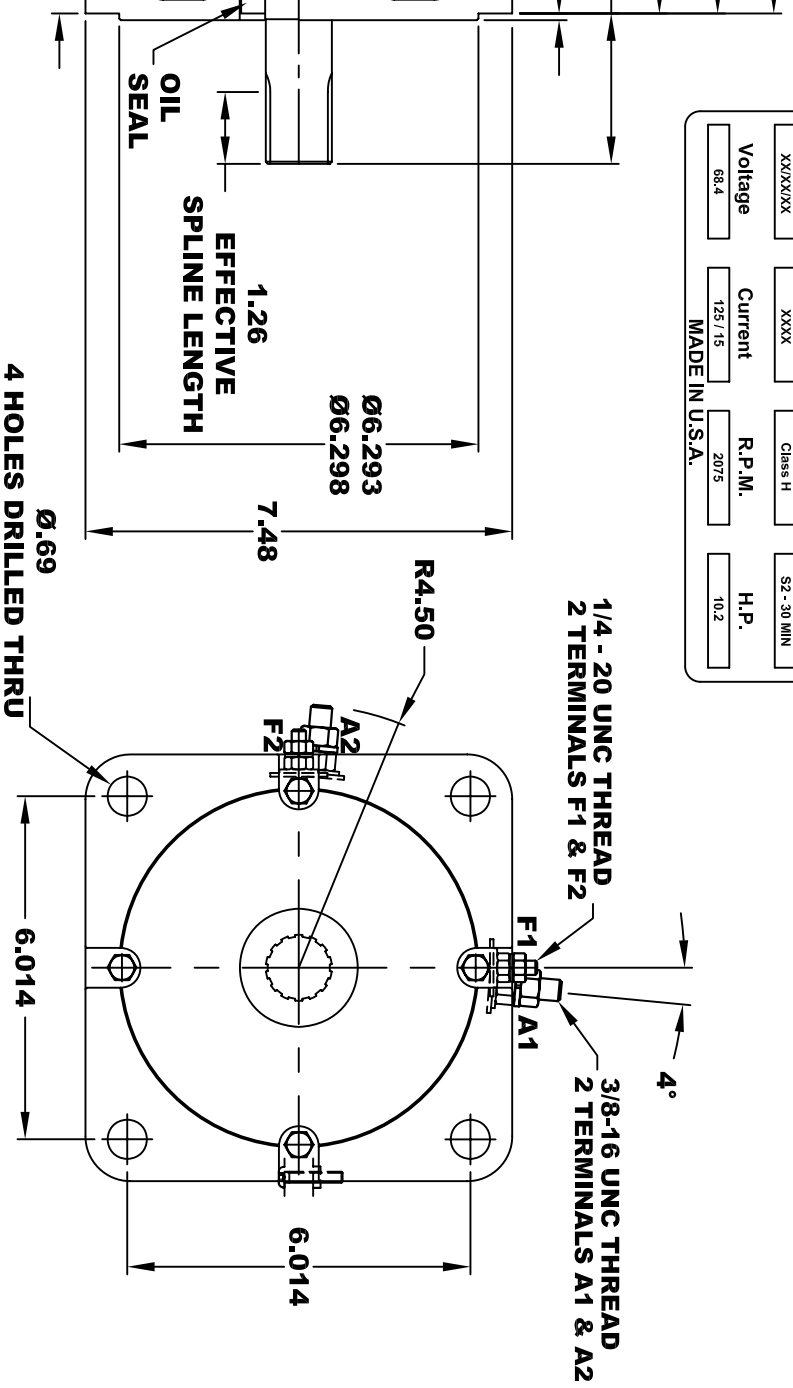
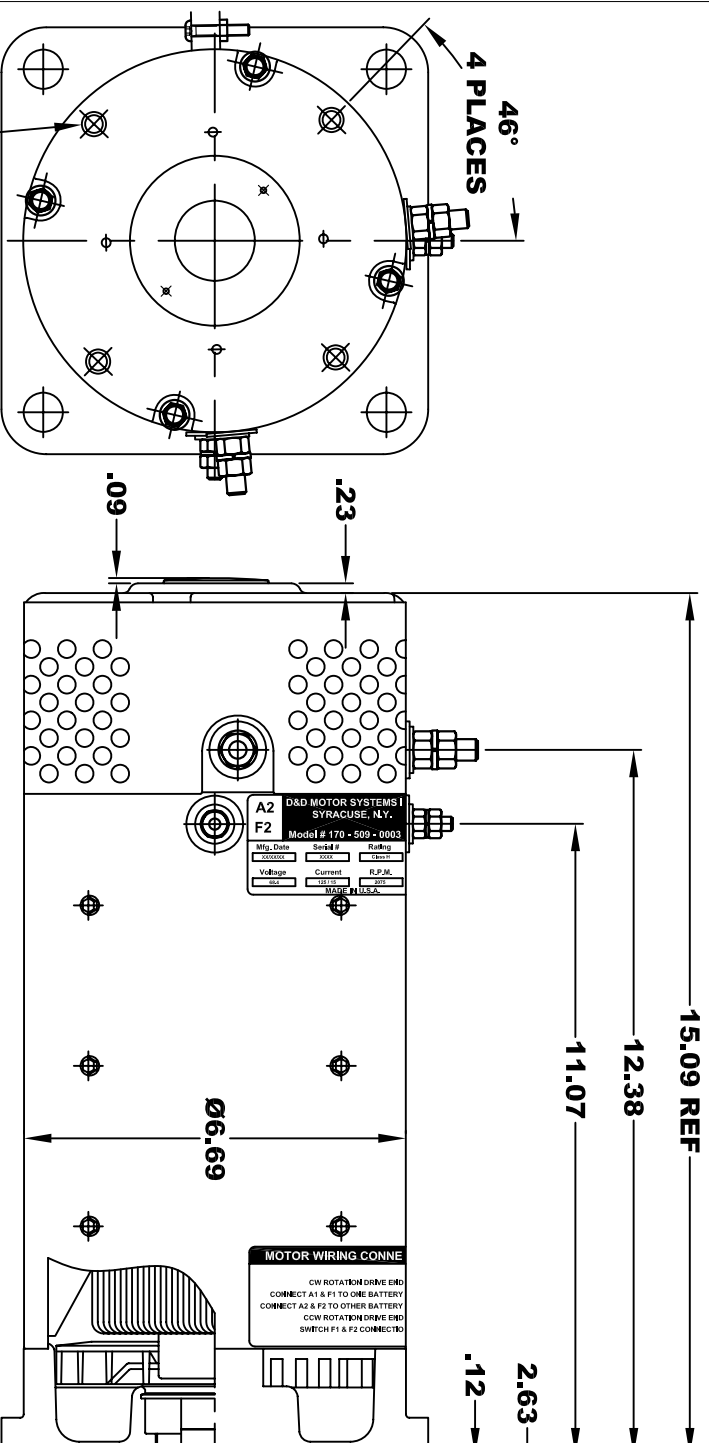
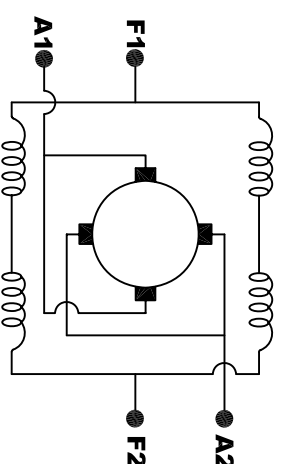


<b>A2</b>		<b>D&amp;D MOTOR SYSTEMS INC.</b>		<b>A1</b>	
<b>F2</b>		<b>SYRACUSE N.Y.</b>		<b>F1</b>	
<b>Model # 170 - 509 - 0003</b>					
Mfg. Date	Serial #	Rating	Duty		
XXXX/XX	XXXX	Class H	S2-30 MIN		
Voltage	Current	R.P.M.	H.P.		
68.4	128 / 15	2075	10.2		
MADE IN U.S.A.					

**TORQUE SPECIFICATION FOR  
POWER CABLE SECURING TOP NUTS**  
**3/8-16 UNC (A1 / A2) - 140 IN / LBS MAX**  
**1/4-20 UNC (F1 / F2) - 50 IN / LBS MAX**



<b>EXTERNAL INVOLUTE SPLINE DATA TO DIN5480</b>	
SPLINE DESIGNATION	W30x2x14x9g
TYPE OF FIT	SIDE FIT
NUMBER OF TEETH	14
MODULE	2
PRESSURE ANGLE	30°
MAJOR DIAMETER (h11)	1.160 - 1.165
MINOR DIAMETER (h14)	.988 - 1.007
MEASURING PIN	.1574
DIMENSION OVER PINS	1.3620 - 1.3595
TOOTH THICKNESS (9g)	.1157 - .1177
REFERENCE DIAMETER	1.181
PITCH DIAMETER	1.102
BASE CIRCLE DIAMETER	.9547
FORM DIAMETER	1.021
MIN FILLET RADII	.0118
MATING PART NO	G1036



**ELECTRICAL WIRING DIAGRAM**

**MOTOR WIRING CONNECTIONS:**  
**CW ROTATION DRIVE END**  
**CONNECT A1 & F1 TO ONE BATTERY TERMINAL**  
**CONNECT A2 & F2 TO OTHER BATTERY TERMINAL**  
**CCW ROTATION DRIVE END**  
**SWITCH F1 & F2 CONNECTIONS**

**MOTOR WEIGHT: 82 LBS**  
**CLASS "H" INSULATION**  
**PERFORMANCE SPEC: 12**

THIS PRINT IS THE PROPERTY OF D&D MOTOR SYSTEMS INC.  
 DO NOT SCALE  
 WORK TO DIMENSIONS  
 TOLERANCES UNLESS OTHERWISE SPECIFIED ARE AS FOLLOWS  
 .XX \_\_\_\_\_ .01  
 .XXX \_\_\_\_\_ .005  
 .XX ROUGH CASTING \_\_\_\_\_ .03  
 HOLES \_\_\_\_\_ -.001 / +.006  
 ANGLES \_\_\_\_\_ 0°30"

<b>D &amp; D MOTOR SYSTEMS INC</b>			
<b>MOTOR OUTLINE</b>			
SIZE	DRAWN DATE	RELEASE DATE	DWG NO. / PART NO.
B	5-15-02	4-25-06	170 - 509 - 0003
SCALE	STF	DRAWN BY	REV DATE
		MJG	ES-20