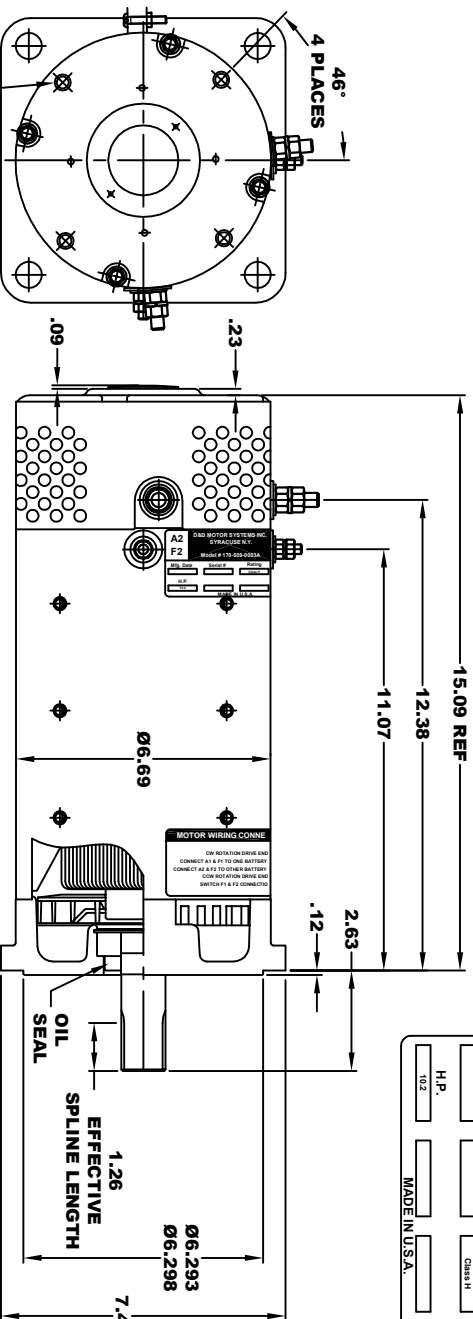


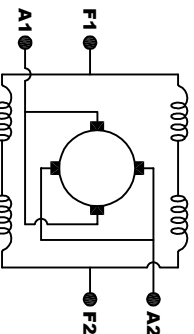
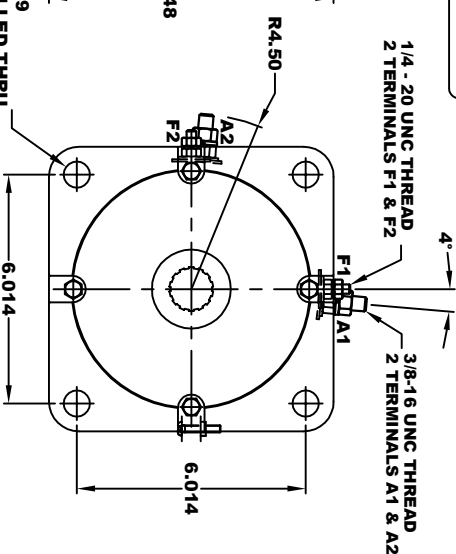
EXTERNAL INVOLUTE SPLINE DATA TO DIN5480	
SPLINE DESIGNATION	W30x2x14x9g
TYPE OF FIT	SIDE FIT
NUMBER OF TEETH	14
MODULE	2
PRESSURE ANGLE	30°
MAJOR DIAMETER (h11)	1.160 - 1.165
MINOR DIAMETER (h14)	.988 - 1.007
MEASURING PIN	.1574
DIMENSION OVER PINS	1.3620 - 1.3595
TOOTH THICKNESS (9g)	.1157 - .1177
REFERENCE DIAMETER	1.181
PITCH DIAMETER	1.102
BASE CIRCLE DIAMETER	.9547
FORM DIAMETER	1.021
MIN FILLET RADII	.0118
MATING PART NO	G1036

MOTOR WEIGHT: 82 LBS
CLASS "H" INSULATION
PERFORMANCE SPEC: 12



A2	D&D MOTOR SYSTEMS INC.	A1
F2	SYRACUSE N.Y.	F1
Mfg. Date	Model # 170-509-0003A	
H.P.	Serial #	Rating
.02		88.4
	MADE IN U.S.A.	Voltage

TORQUE SPECIFICATION FOR
POWER CABLE SECURING TOP NUTS
3/8-16 UNC (A1 / A2) - 140 IN / LBS MAX
1/4-20 UNC (F1 / F2) - 50 IN / LBS MAX



ELECTRICAL WIRING DIAGRAM

THIS PRINT IS THE PROPERTY OF D&D MOTOR SYSTEMS INC.
DO NOT SCALE
WORK TO DIMENSIONS
TOLERANCES UNLESS OTHERWISE SPECIFIED ARE AS FOLLOWS

.XX	.01
.XXX	.005
.XX	.03
.XXX	.001 / +.006
ANGLES	.030°

MOTOR WIRING CONNECTIONS:
CW ROTATION DRIVE END
CONNECT A1 & F1 TO ONE BATTERY TERMINAL
CONNECT A2 & F2 TO OTHER BATTERY TERMINAL
CCW ROTATION DRIVE END
SWITCH F1 & F2 CONNECTIONS

D & D MOTOR SYSTEMS INC

MOTOR OUTLINE

SIZE	SCALE	DRAWN DATE	RELEASE DATE	DWG NO. / PART NO.	REV
B	STF	5-15-02	3-15-23	170 - 509 - 0003A	
			MJG	ES-20	