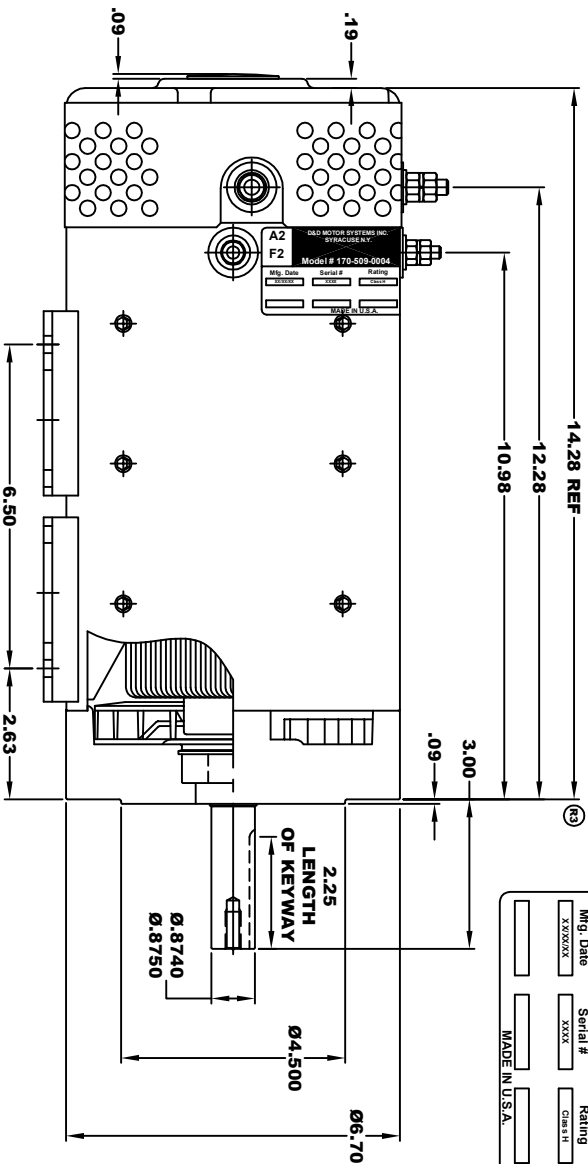
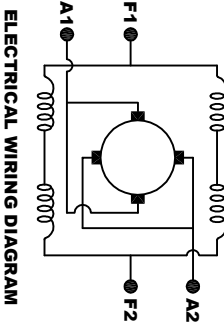
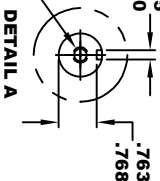


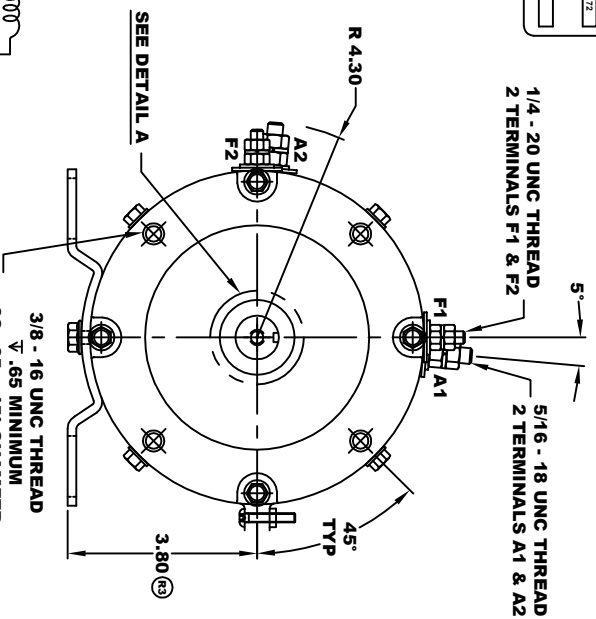
<b>A2</b>		<b>A1</b>	
<b>F2</b>			
<b>F1</b>			
<b>D &amp; D MOTOR SYSTEMS INC.</b> SYRACUSE N.Y.			
Model # 170-509-0004			
Mfg. Date	Serial #	Rating	Voltage
XXXXXX	XXXX	Grd 11	36 / 47 / 72
MADE IN U.S.A.			



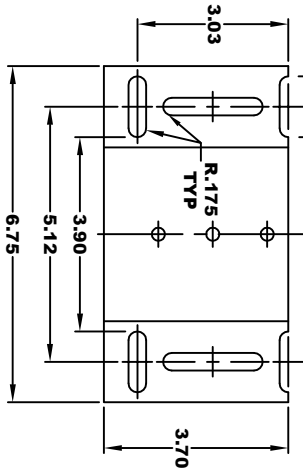
5/16 x 18 UNC THREAD  
V .75



**TORQUE SPECIFICATION FOR  
POWER CABLE SECURING TOP NUTS**  
5/16-18 UNC (A1 / A2) - 110 IN / LBS MAX  
1/4-20 UNC (F1 / F2) - 50 IN / LBS MAX



**MOTOR WIRING CONNECTIONS:**  
CW ROTATION DRIVE END  
CONNECT A1 & F1 TO ONE BATTERY TERMINAL  
CONNECT A2 & F2 TO OTHER BATTERY TERMINAL  
CCW ROTATION DRIVE END  
SWITCH F1 & F2 CONNECTIONS



**MOTOR WEIGHT: 82 LBS**  
**CLASS "H" INSULATION**  
**PERFORMANCE SPEC: 12**

THIS PRINT IS THE PROPERTY OF D & D MOTOR SYSTEMS INC.  
DO NOT SCALE  
WORK TO DIMENSIONS  
TOLERANCES UNLESS OTHERWISE SPECIFIED ARE AS FOLLOWS  
XX .005  
XX ROUNDED CASTING .03  
HOLES .001 / +.006  
ANGLES 0-30°

<b>D &amp; D MOTOR SYSTEMS INC</b>			
<b>MOTOR OUTLINE</b>			
SIZE	DRAWN DATE	RELEASE DATE	DRG NO. / PART NO.
B	2-10-11	1-27-23	170-509-0004
SCALE	DRAWN BY	MJG	ES-127B-12
			REV DATE
			6-26-15
			REV
			R3