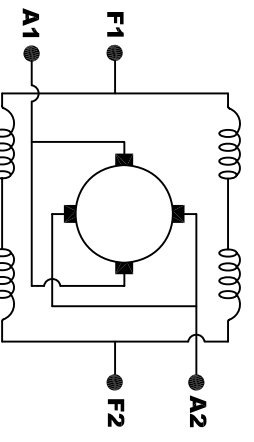
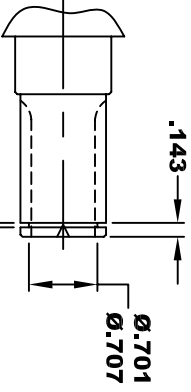
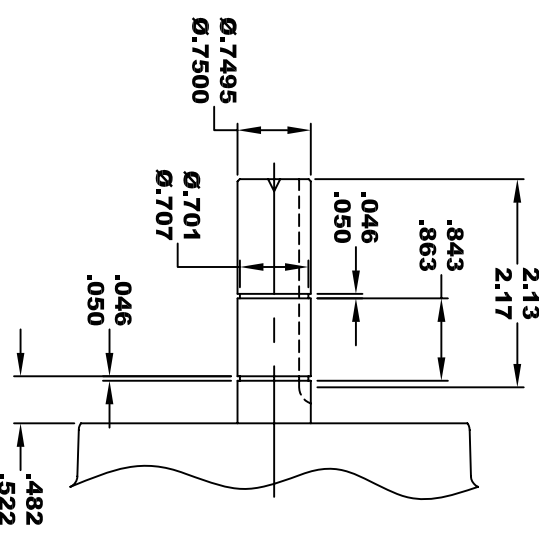
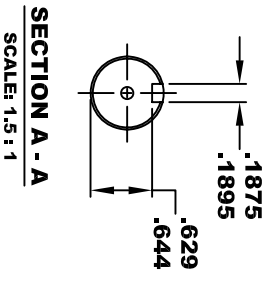
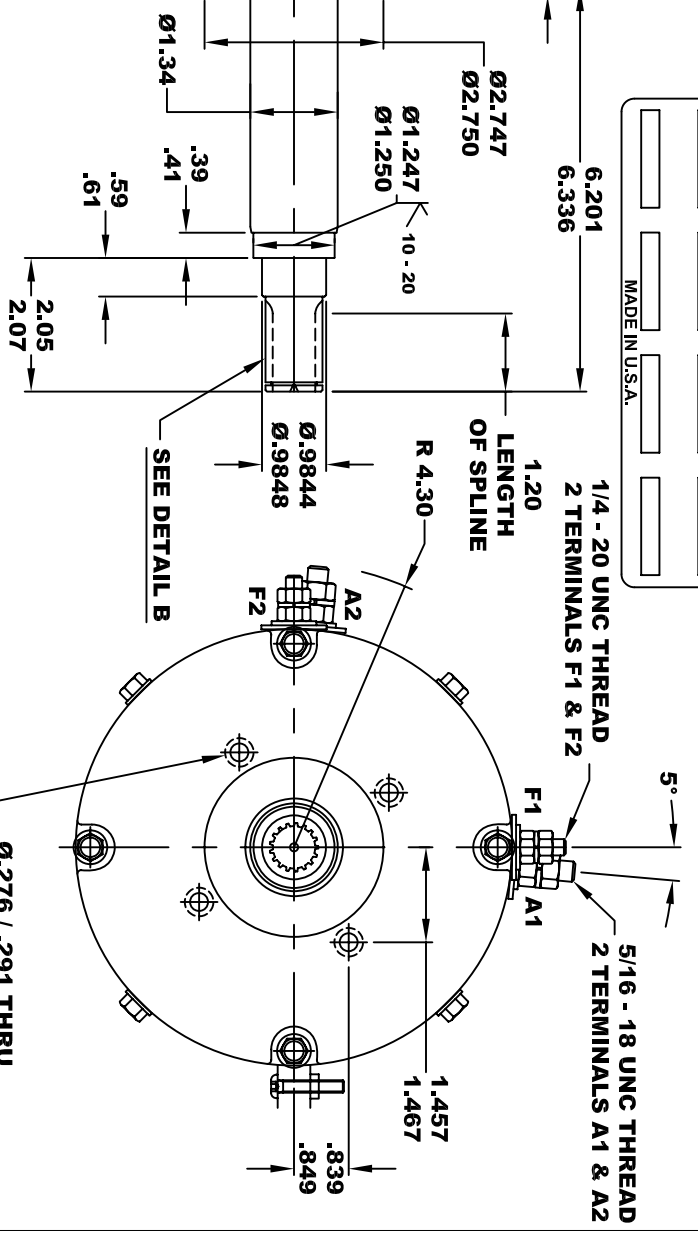


D&D MOTOR SYSTEMS INC.		A1	
SYRACUSE N.Y.		F1	
F2	A2	F1	A1
Model # 170 - 510 - 0004			
Mfg. Date	Serial #	Rating	Voltage
XXXXXX	XXXX	CLASS -H	36/148
MADE IN U.S.A.			

TORQUE SPECIFICATION FOR POWER CABLE SECURING TOP NUTS
 5/16-18 UNC (A1 / A2) - 110 IN / LBS MAX
 1/4-20 UNC (F1 / F2) - 50 IN / LBS MAX



MOTOR WIRING CONNECTIONS:
 CW ROTATION DRIVE END
 CONNECT A1 & F1 TO ONE BATTERY TERMINAL
 CONNECT A2 & F2 TO OTHER BATTERY TERMINAL
 CCW ROTATION DRIVE END
 SWITCH F1 & F2 CONNECTIONS

- EXTERNAL INVOLUTE SPLINE SPECIFICATION**
- NO. OF TEETH _____ 17
 - DIAMETRICAL PITCH _____ 24/48
 - PRESSURE ANGLE _____ 30°
 - PIN Ø _____ .080
 - DIA OVER 2 PINS AFTER HARD _____ .8235 / .8254
 - FORM Ø _____ .663
 - BASE Ø _____ .6134
 - MAJOR Ø _____ .748 / .750
 - PITCH Ø _____ .7083
 - MINOR Ø _____ .652
- CIRCULAR TOOTH THICKNESS**
- MAX ACTUAL _____ .0655
 - MIN EFFECTIVE _____ .0654

MOTOR WEIGHT: 61 LBS
CLASS "H" INSULATION
PERFORMANCE SPEC: 10

THIS PRINT IS THE PROPERTY OF D&D MOTOR SYSTEMS INC.
 DO NOT SCALE
 WORK TO DIMENSIONS
 TOLERANCES UNLESS OTHERWISE SPECIFIED ARE AS FOLLOWS

.XXX _____	.005
.XX ROUGH CASTING _____	.03
HOLES _____	-.001 / +.006
ANGLES _____	0°30"

D & D MOTOR SYSTEMS INC

MOTOR OUTLINE

SIZE	DRAWN DATE	RELEASE DATE	DWG NO. / PART NO.	REV
B	4-10-08	5-11-15	170 - 510 - 0004	
SCALE	STF	DRAWN BY	MJG	REV DATE