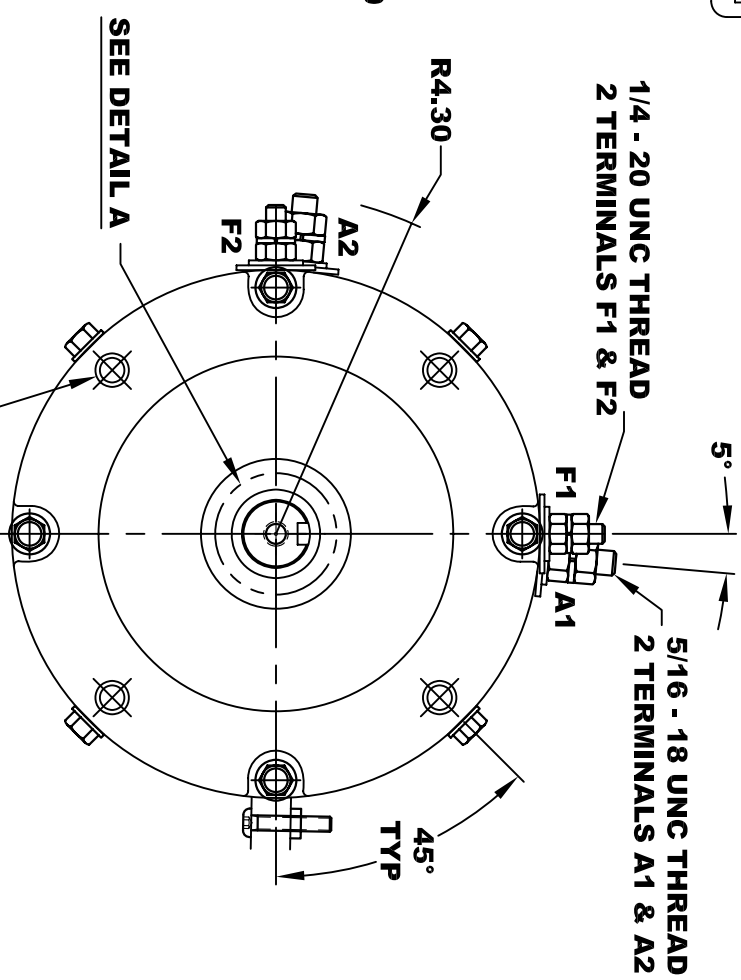
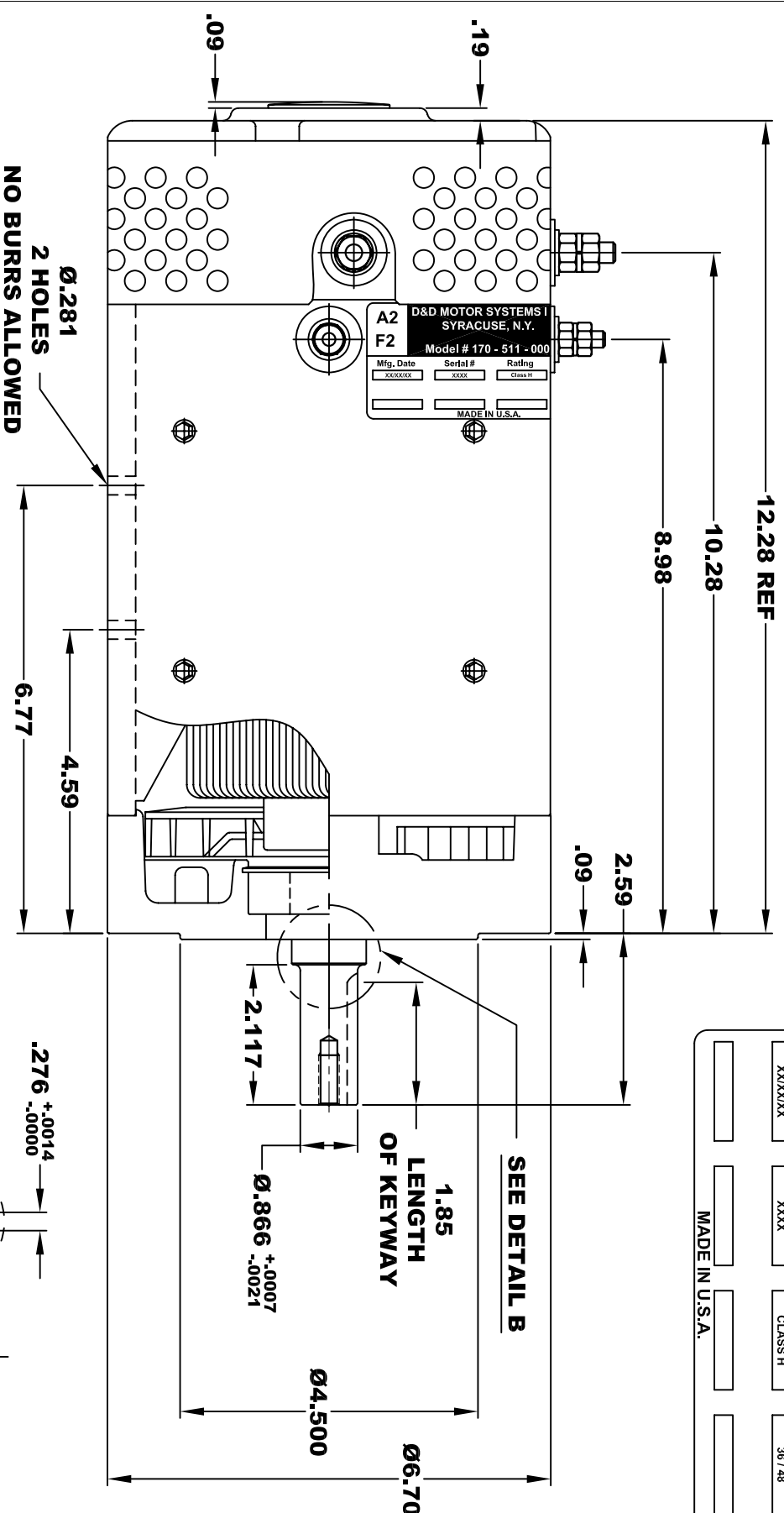
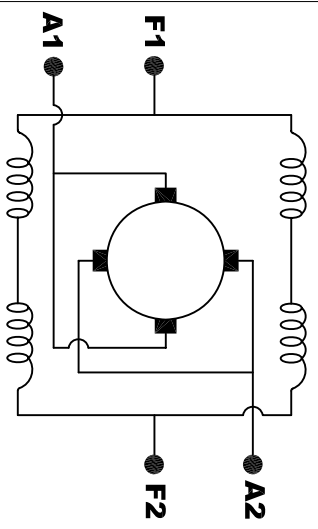


A2	D&D MOTOR SYSTEMS INC.			A1
F2	SYRACUSE N.Y.			F1
Model # 170 - 511 - 0003		Voltage		
Mfg. Date	Serial #	Rating	36 / 48	
XXXXXX	XXXX	CLASS H		
MADE IN U.S.A.				

**TORQUE SPECIFICATION FOR
POWER CABLE SECURING TOP NUTS**
5/16-18 UNC (A1 / A2) - 110 IN / LBS MAX
1/4-20 UNC (F1 / F2) - 50 IN / LBS MAX



DRAFT

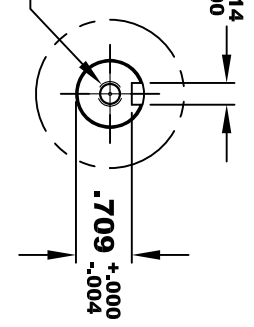


ELECTRICAL WIRING DIAGRAM

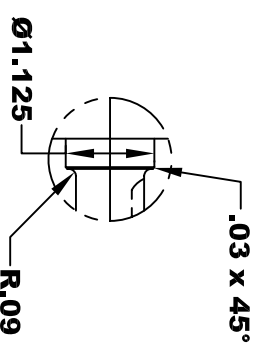
MOTOR WIRING CONNECTIONS:
CW ROTATION DRIVE END
CONNECT A1 & F1 TO ONE BATTERY TERMINAL
CCW ROTATION DRIVE END
CONNECT A2 & F2 TO OTHER BATTERY TERMINAL
SWITCH F1 & F2 CONNECTIONS

5/16 x 18 UNC THREAD
 T .75

DETAIL A



DETAIL B



MOTOR WEIGHT: 62 LBS
CLASS "H" INSULATION
PERFORMANCE SPEC: 15

D & D MOTOR SYSTEMS INC

MOTOR OUTLINE

THIS PRINT IS THE PROPERTY OF D&D MOTOR SYSTEMS INC.
 DO NOT SCALE
 WORK TO DIMENSIONS
 TOLERANCES UNLESS OTHERWISE SPECIFIED ARE AS FOLLOWS

.XX	.01
.XXX	.005
.XX ROUGH CASTING	.03
HOLES	-.001 / +.006
ANGLES	0°30"

SIZE	DRAWN DATE	RELEASE DATE	DWG NO. / PART NO.	REV
B	6-6-05	12-4-06	170 - 511 - 0003	
SCALE	STF	DRAWN BY	MJG	ES-117-15
				REV DATE