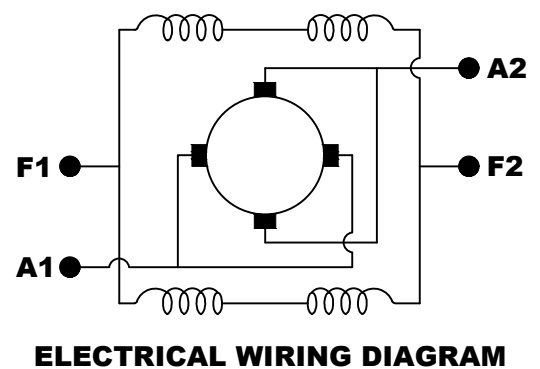
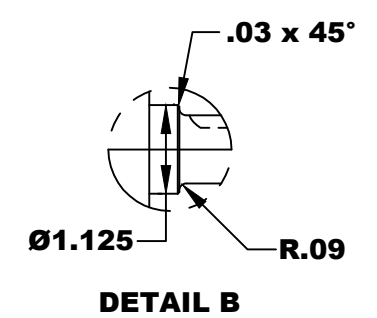
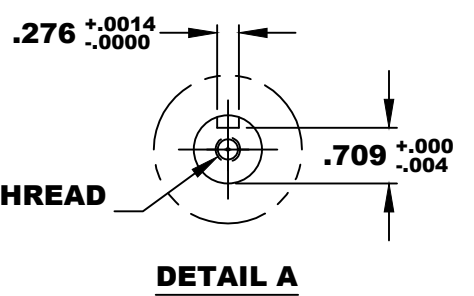
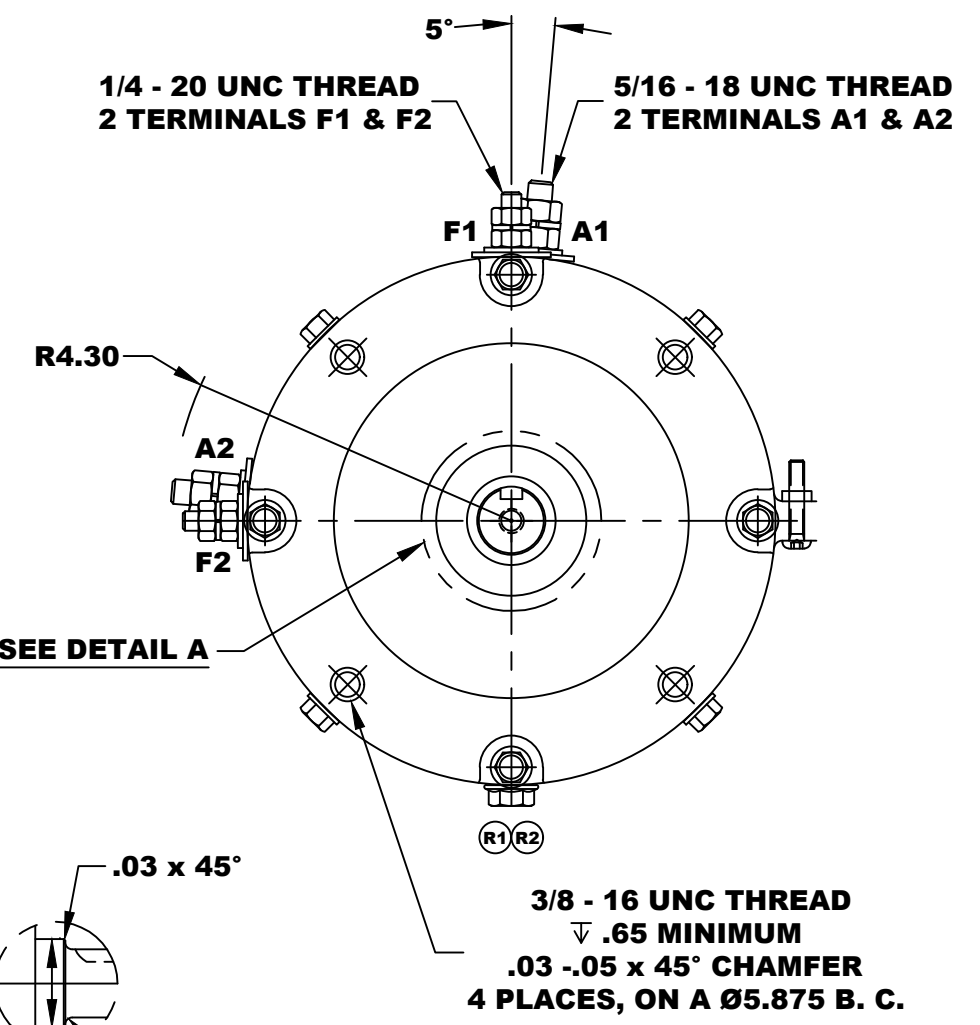
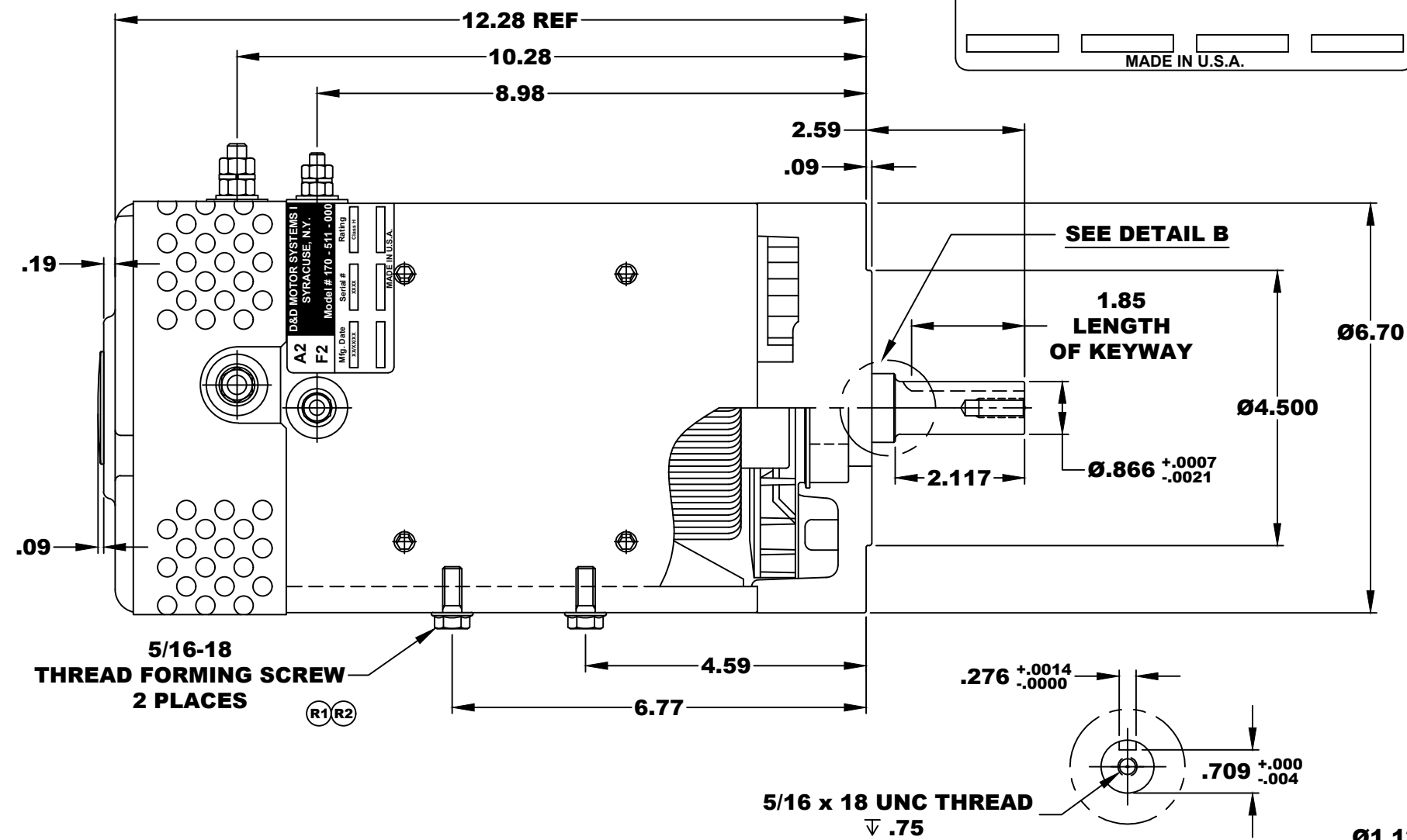


A2	D&D MOTOR SYSTEMS INC.		A1
F2	SYRACUSE N.Y.		F1
Model # 170 - 511 - 0003			
Mfg. Date	Serial #	Rating	Voltage
XX/XX/XX	XXXX	CLASS H	36 / 48
MADE IN U.S.A.			

**TORQUE SPECIFICATION FOR
POWER CABLE SECURING TOP NUTS**
5/16-18 UNC (A1 / A2) - 110 IN / LBS MAX
1/4-20 UNC (F1 / F2) - 50 IN / LBS MAX



MOTOR WIRING CONNECTIONS:
CW ROTATION DRIVE END
CONNECT A1 & F1 TO ONE BATTERY TERMINAL
CONNECT A2 & F2 TO OTHER BATTERY TERMINAL
CCW ROTATION DRIVE END
SWITCH F1 & F2 CONNECTIONS

MOTOR WEIGHT: 62 LBS
CLASS "H" INSULATION
PERFORMANCE SPEC: 15 / K-254

THIS PRINT IS THE PROPERTY OF D&D MOTOR SYSTEMS INC.

DO NOT SCALE
WORK TO DIMENSIONS

TOLERANCES UNLESS OTHERWISE SPECIFIED ARE AS FOLLOWS

.XX	_____	.01
.XXX	_____	.005
.XX ROUGH CASTING	_____	.03
HOLES	_____	-.001 / +.006
ANGLES	_____	0°30"

D & D MOTOR SYSTEMS INC				
MOTOR OUTLINE				
SIZE	DRAWN DATE	RELEASE DATE	DWG NO. / PART NO.	REV
B	6-6-05	12-4-06	170 - 511 - 0003	R2
SCALE	DRAWN BY	REV DATE		
STF	MJG	10-20-09		