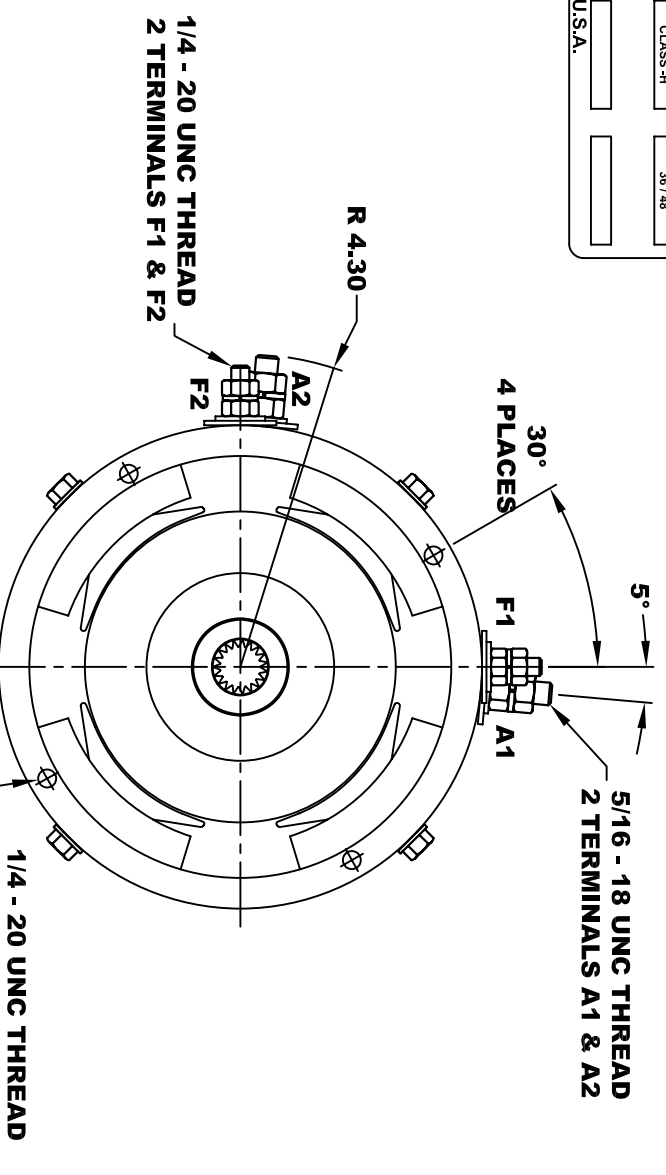
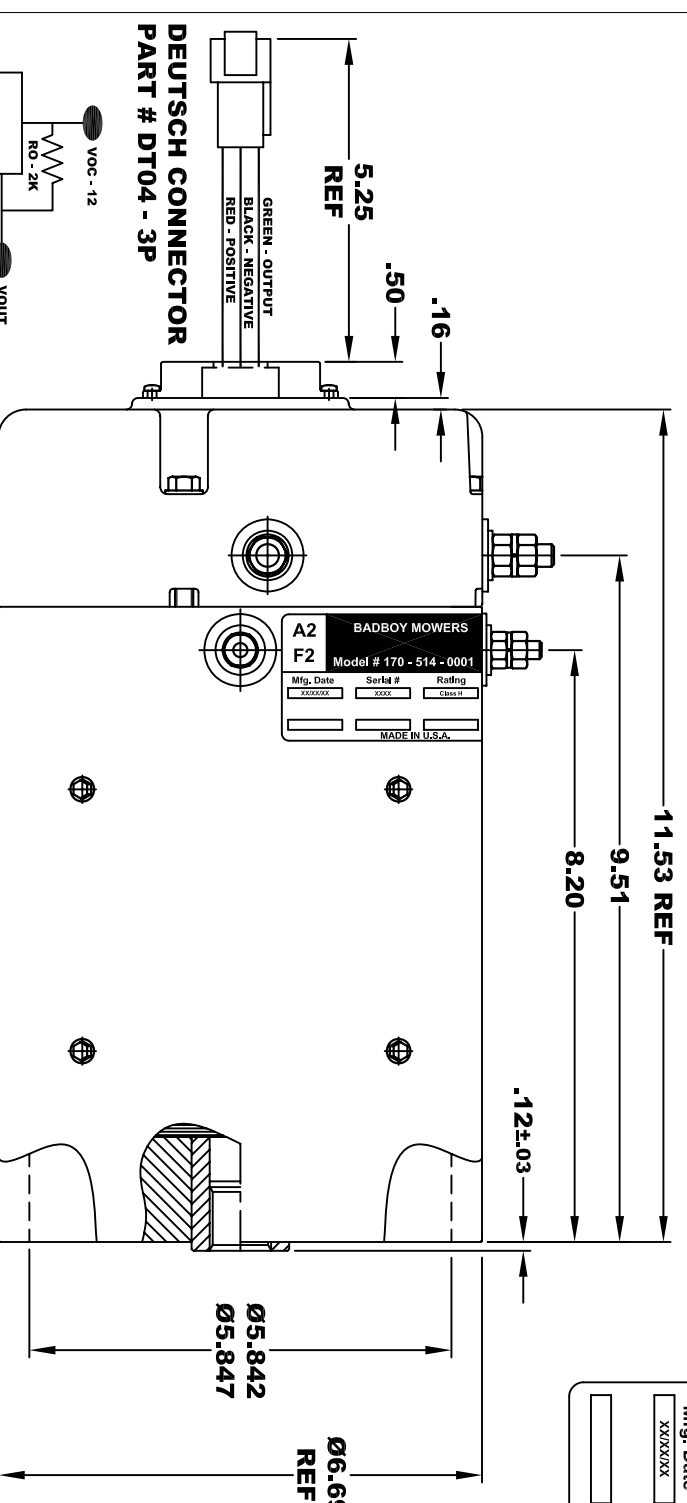


| | | | | |
|---------------------|---------------------------------|--------------------|--------------------|-----------|
| A2 | BADBOY MOWERS | | | A1 |
| F2 | Model # 170 - 514 - 0001 | | | F1 |
| Mfg. Date XXXXXX | Serial # XXXX | Rating CLASS -H | Voltage 36 / 48 | |
| MADE IN U.S.A. | | | | |

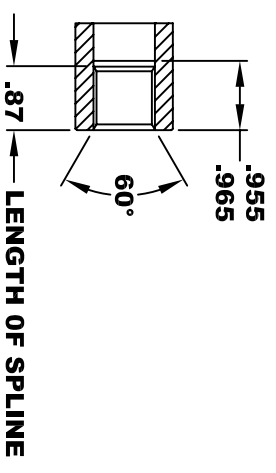


TORQUE SPECIFICATION FOR POWER CABLE SECURING TOP NUTS
5/16-18 UNC (A1 / A2) - 110 IN / LBS MAX
1/4-20 UNC (F1 / F2) - 50 IN / LBS MAX

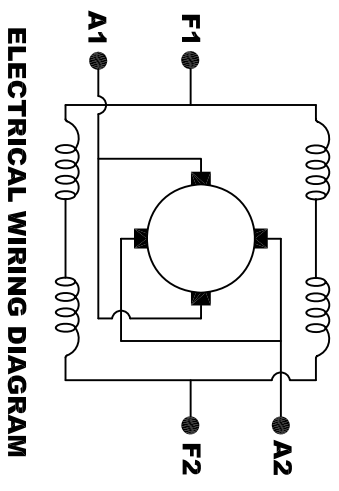
ELECTRICAL SPECIFICATION:
 -4.5V TO 24V OPERATING VOLTAGE
 -20°C TO 85°C OPERATING TEMPERATURE
 -CURRENT SINKING UP TO 25mA
 -AN EXTERNAL OUTPUT PULL UP RESISTOR IS REQUIRED
 -SENSOR IS DESIGNED TO OPERATE WITH 4 N/S POLEPAIRS
 THE OPERATIONAL DISTANCE BETWEEN THE MAGNET AND THE HOUSING, INCLUDING ANY RUNOUT SHOULD NOT EXCEED .030 INCHES

INTERNAL INVOLUTE SPLINE SPECIFICATION
CLASS 5 FILLET ROOT SIDE FIT (PER A.N.S.I. B92.1)

| | |
|---------------------------------|-------------|
| NO. OF TEETH | 19 |
| SPLINE PITCH | 24 / 48 |
| PRESSURE ANGLE | 45° |
| BASE Ø | .5597 REF |
| PITCH Ø | .7916 REF |
| MAJOR Ø | .850 - .859 |
| FORM Ø | .835 |
| MINOR Ø | .767 - .772 |
| CIRCULAR SPACE WIDTH | .0764 |
| EFFECTIVE SPACE WIDTH | .0738 |
| MAX. DIMENSION BETWEEN TWO PINS | .6714 |
| PIN Ø | .0800 |
| SPLINE HARDNESS TO BE R/C | 26-34 |



MOTOR WEIGHT 66 LBS
CLASS "H" INSULATION
PERFORMANCE SPEC: 68



ELECTRICAL WIRING DIAGRAM

MOTOR WIRING CONNECTIONS:
CW ROTATION DRIVE END
CONNECT A1 & F1 TO ONE BATTERY TERMINAL
CONNECT A2 & F2 TO OTHER BATTERY TERMINAL
CCW ROTATION DRIVE END
SWITCH F1 & F2 CONNECTIONS

THIS PRINT IS THE PROPERTY OF D&D MOTOR SYSTEMS INC.
 DO NOT SCALE
 WORK TO DIMENSIONS
 TOLERANCES UNLESS OTHERWISE SPECIFIED ARE AS FOLLOWS
 .XX _____ .01
 .XXX _____ .005
 .XX ROUGH CASTING _____ .03
 HOLES _____ -.001 / +.006
 ANGLES _____ 0°30"

| | | | |
|------------------------------------|------------|--------------|--------------------|
| D & D MOTOR SYSTEMS INC | | | |
| MOTOR OUTLINE | | | |
| SIZE | DRAWN DATE | RELEASE DATE | DWG NO. / PART NO. |
| B | 12-7-06 | 2-18-09 | 170 - 514 - 0001 |
| SCALE | STF | DRAWN BY | MJG |
| | | | REV DATE |