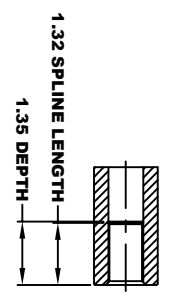
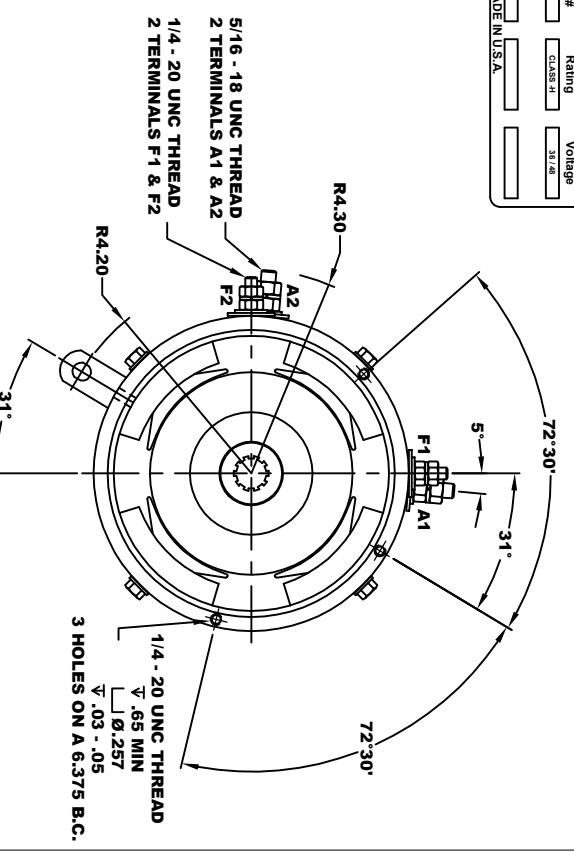
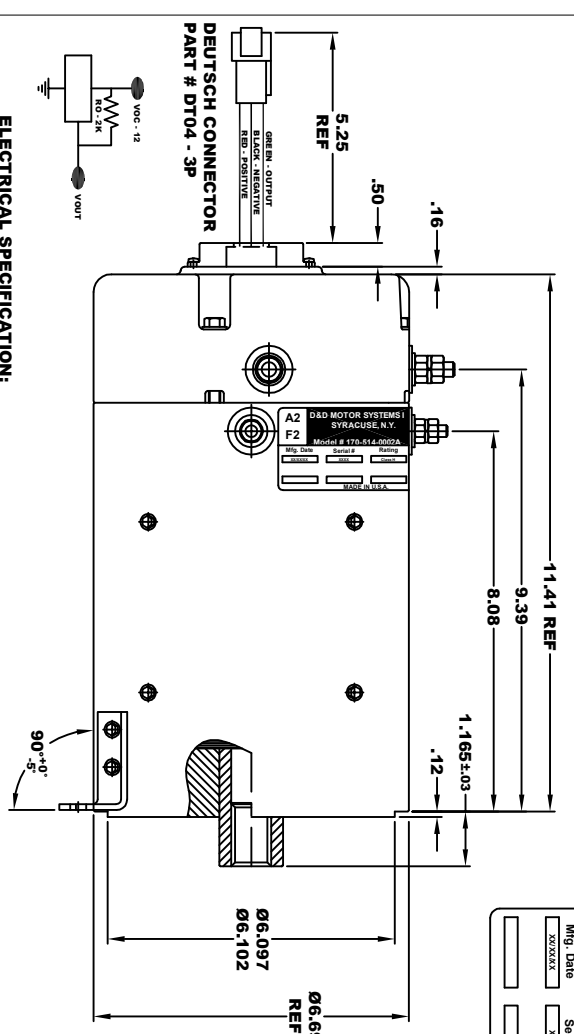
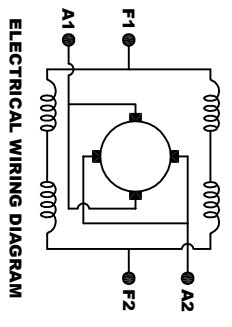
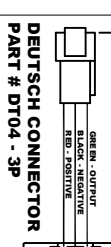


**TORQUE SPECIFICATION FOR  
POWER CABLE SECURING TOP NUTS**  
5/16-18 UNC (A1 / A2) - 110 IN. / LBS MAX  
1/4-20 UNC (F1 / F2) - 50 IN. / LBS MAX

<b>A2</b>		<b>D&amp;D MOTOR SYSTEMS INC.</b>		<b>A1</b>	
SYRACUSE N.Y.		SYRACUSE N.Y.		SYRACUSE N.Y.	
Model # 170-514-0002A		Model # 170-514-0002A		Model # 170-514-0002A	
Mfg. Date	Serial #	Rating	Class	Volts	381.48
XXXXXX	XXXX	CLASS H			
MADE IN U.S.A.					



**ELECTRICAL SPECIFICATION:**  
-4.5V TO 24V OPERATING VOLTAGE  
-20 C. TO 85 C. OPERATING TEMPERATURE  
-CURRENT SINKING UP TO 25mA  
-AN EXTERNAL OUTPUT PULL UP RESISTOR IS REQUIRED  
-SENSOR IS DESIGNED TO OPERATE WITH 4 N/S POLEPAIRS  
-THE OPERATIONAL DISTANCE BETWEEN THE MAGNET  
AND THE HOUSING, INCLUDING ANY RUNOUT  
SHOULD NOT EXCEED .030 INCHES



**MOTOR WIRING CONNECTIONS:**  
CW ROTATION DRIVE END  
CONNECT A1 & F1 TO ONE BATTERY TERMINAL  
CCW ROTATION DRIVE END  
CONNECT A2 & F2 TO OTHER BATTERY TERMINAL  
SWITCH F1 & F2 CONNECTIONS

THIS PRINT IS THE PROPERTY OF D&D MOTOR SYSTEMS INC.  
DO NOT SCALE  
WORK TO DIMENSIONS  
TOLERANCES UNLESS OTHERWISE SPECIFIED ARE AS FOLLOWS  
XX .01  
XXX .005  
XX XX ROUGH CASTING .03  
HOLES .001 / +.006  
ANGLES .030°

<b>D &amp; D MOTOR SYSTEMS INC</b>			
<b>MOTOR OUTLINE</b>			
SIZE	DRAWN DATE	RELEASE DATE	DWG NO. / PART NO.
B	11-10-09	11-30-23	170-514-0002A
SCALE	DRAWN BY	M/JG	ES-146-68
STF			REV DATE

MOTOR WEIGHT 66 LBS  
CLASS "H" INSULATION  
PERFORMANCE SPEC: 68