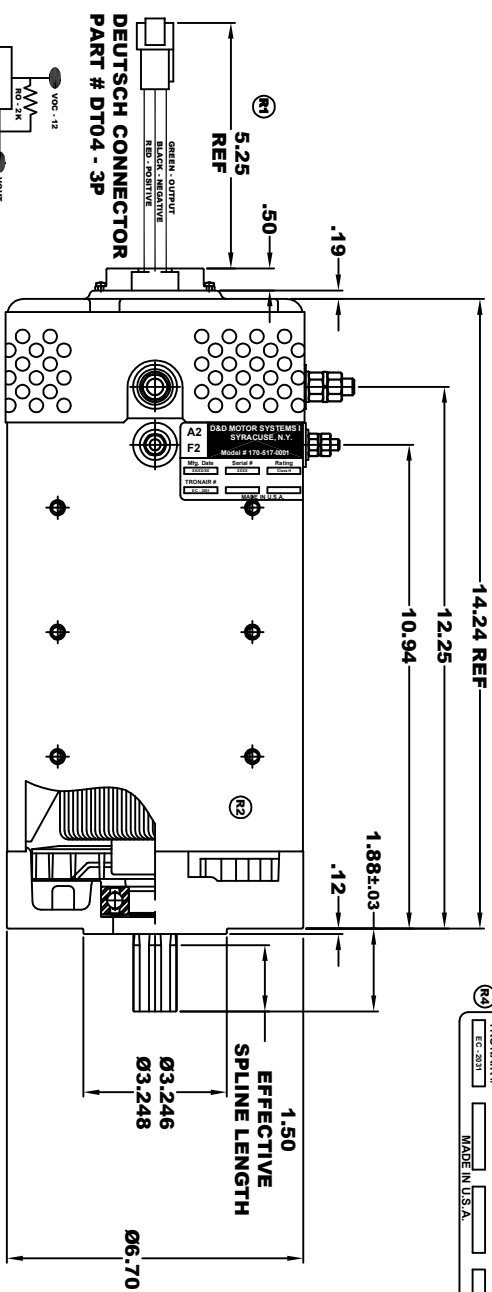
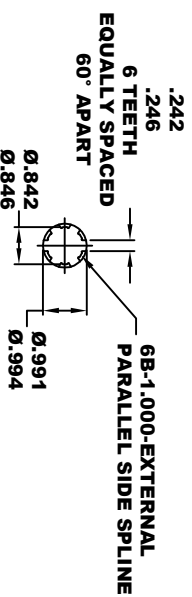


<b>A2</b>		<b>D&amp;D MOTOR SYSTEMS INC.</b>		<b>A1</b>	
<b>F2</b>		SYRACUSE N.Y.		<b>F1</b>	
Model # 170-517-0001					
Mfg. Date	Serial #	Rating	Voltage		
SIZE	SOCK	CLASS	2K		
THROWAWAY #	MADE IN U.S.A.				

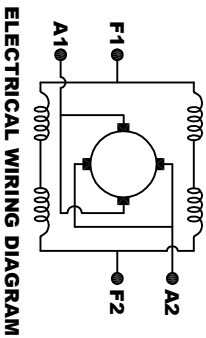
**TORQUE SPECIFICATION FOR POWER CABLE SECURING TOP NUTS**  
 3/8-16 UNC (A1 / A2) - 140 IN / LBS MAX  
 1/4-20 UNC (F1 / F2) - 50 IN / LBS MAX



**SPEED SENSOR ELECTRICAL SPECIFICATION:**  
 -4.5V TO 24V OPERATING VOLTAGE  
 -20°C TO 85°C OPERATING TEMPERATURE  
 -CURRENT SINKING UP TO 25mA  
 -AN EXTERNAL OUTPUT PULL UP RESISTOR IS REQUIRED  
 -SENSOR IS DESIGNED TO OPERATE WITH 4 N/S POLEPAIRS  
 -THE OPERATIONAL DISTANCE BETWEEN THE MAGNET AND THE HOUSING, INCLUDING ANY RUNOUT SHOULD NOT EXCEED .030 INCHES



**MOTOR WEIGHT: 81 LBS**  
**CLASS "H" INSULATION**  
**PERFORMANCE SPEC: 72**



**MOTOR WIRING CONNECTIONS:**  
 -CW ROTATION DRIVE END  
 -CONNECT A1 & F1 TO ONE BATTERY TERMINAL  
 -CCW ROTATION DRIVE END  
 -SWITCH F1 & F2 CONNECTIONS

THIS PRINT IS THE PROPERTY OF D&D MOTOR SYSTEMS INC.  
 DO NOT SCALE  
 WORK TO DIMENSIONS  
 TOLERANCES UNLESS OTHERWISE SPECIFIED ARE AS FOLLOWS  
 .XX — .01  
 .XXX — .005  
 .XX ROUNDED CASTING — .03  
 HOLES — .001 / +.006  
 ANGLES — 0-30°

<b>D &amp; D MOTOR SYSTEMS INC</b>		<b>MOTOR OUTLINE</b>	
SIZE	DRAWN DATE	RELEASE DATE	DRG NO. / PART NO.
B	7-23-07	3-25-23	170-517-0001
SCALE	STF	DRAWN BY	MUG
			ES-135-72
			REV DATE
			10-23-15