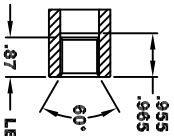
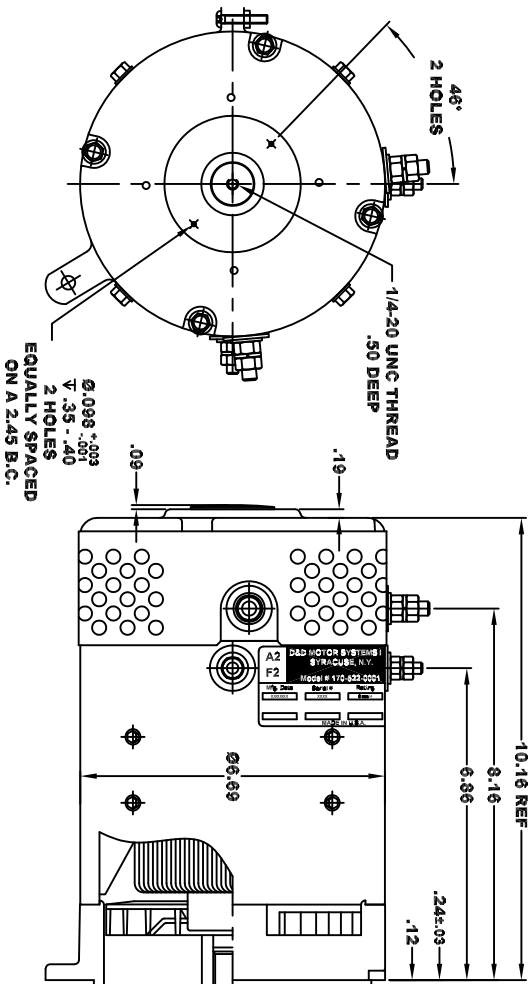


**INTERNAL INVOLUTE SPLINE SPECIFICATION**  
**CLASS 5 FILLET ROOT SIDE FIT (PER A.N.S.I. B92.1)**

NO. OF TEETH \_\_\_\_\_ 19  
 SPLINE PITCH \_\_\_\_\_ 24 / 48  
 PRESSURE ANGLE \_\_\_\_\_ 45°  
 BASE Ø \_\_\_\_\_ .5597 REF  
 PITCH Ø \_\_\_\_\_ .7916 REF  
 MAJOR Ø \_\_\_\_\_ .850 - .859  
 FORM Ø \_\_\_\_\_ .835  
 MINOR Ø \_\_\_\_\_ .767 - .772  
 CIRCULAR SPACE WIDTH \_\_\_\_\_ .0764  
 EFFECTIVE SPACE WIDTH \_\_\_\_\_ .0739  
 MAX. DIMENSION BETWEEN TWO PINS \_\_\_\_\_ .6714  
 PIN Ø \_\_\_\_\_ .0800  
 SPLINE HARDNESS TO BE R/C 26-34

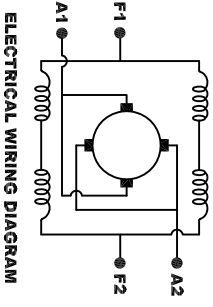
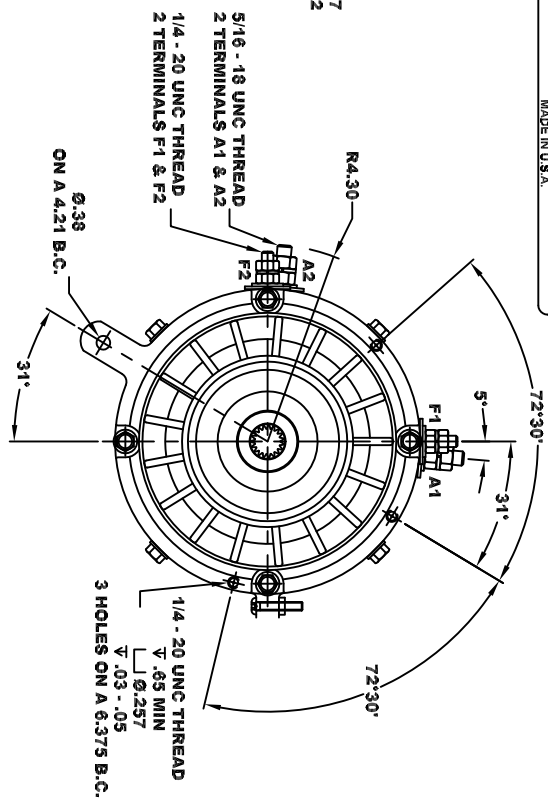


MOTOR WEIGHT: 50 LBS  
 CLASS "H" INSULATION  
 PERFORMANCE SPEC: 101



<b>A2</b>		<b>D&amp;D MOTOR SYSTEMS INC.</b>		<b>A1</b>	
<b>F2</b>		SYRACUSE, N.Y.		<b>F1</b>	
Mfg. Date		Model # 170-522-0001		Rating	
Serial #		Voltage		200V/200V	
200V/200V		CLUB #		200V/200V	
MADE IN U.S.A.					

**TORQUE SPECIFICATION FOR**  
**POWER CABLE SECURING TOP NUTS**  
 5/16-18 UNC (A1 / A2) - 110 IN / LBS MAX  
 1/4-20 UNC (F1 / F2) - 50 IN / LBS MAX



**MOTOR WIRING CONNECTIONS:**  
 CW ROTATION DRIVE END  
 CONNECT A1 & F1 TO ONE BATTERY TERMINAL  
 CCW ROTATION DRIVE END  
 CONNECT A2 & F2 TO OTHER BATTERY TERMINAL  
 SWITCH F1 & F2 CONNECTIONS

THIS PRINT IS THE PROPERTY OF D&D MOTOR SYSTEMS INC.  
 DO NOT SCALE  
 WORK TO DIMENSIONS  
 TOLERANCES UNLESS OTHERWISE SPECIFIED ARE AS FOLLOWS  
 .XXX \_\_\_\_\_ .01  
 .XXX \_\_\_\_\_ .005  
 .XXX ROUGH CASTING \_\_\_\_\_ .03  
 HOLES \_\_\_\_\_ .001 / ±.006  
 ANGLES \_\_\_\_\_ .09°

<b>D &amp; D MOTOR SYSTEMS INC</b>		<b>MOTOR OUTLINE</b>	
SIZE	DRAWN DATE	RELEASE DATE	DWG NO. / PART NO.
B	10-29-24	12-19-24	170-522-0001
SCALE	STF	DRAWN BY	REV DATE
		MJG	ES-183-101