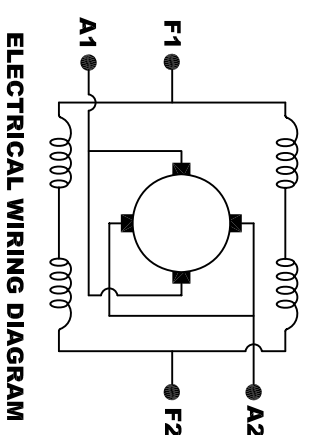
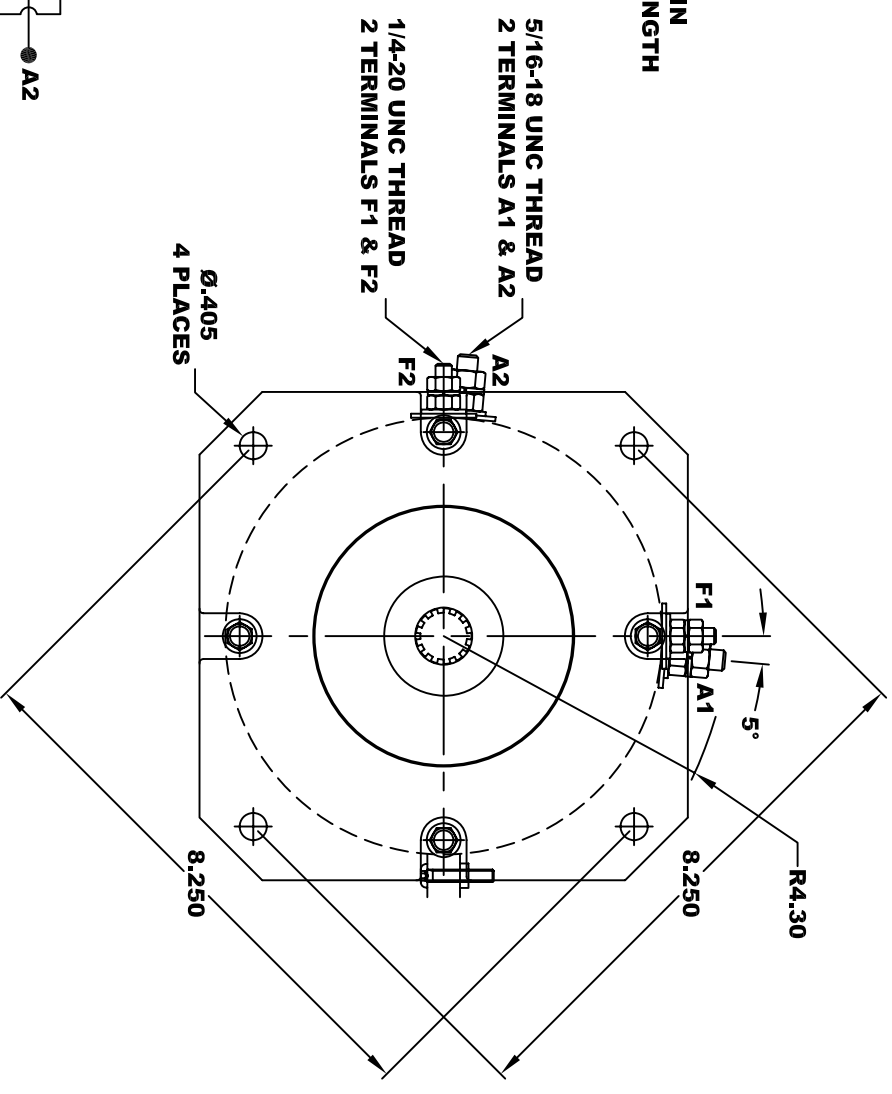
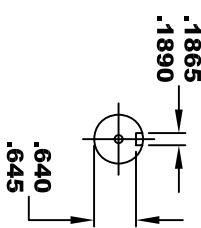
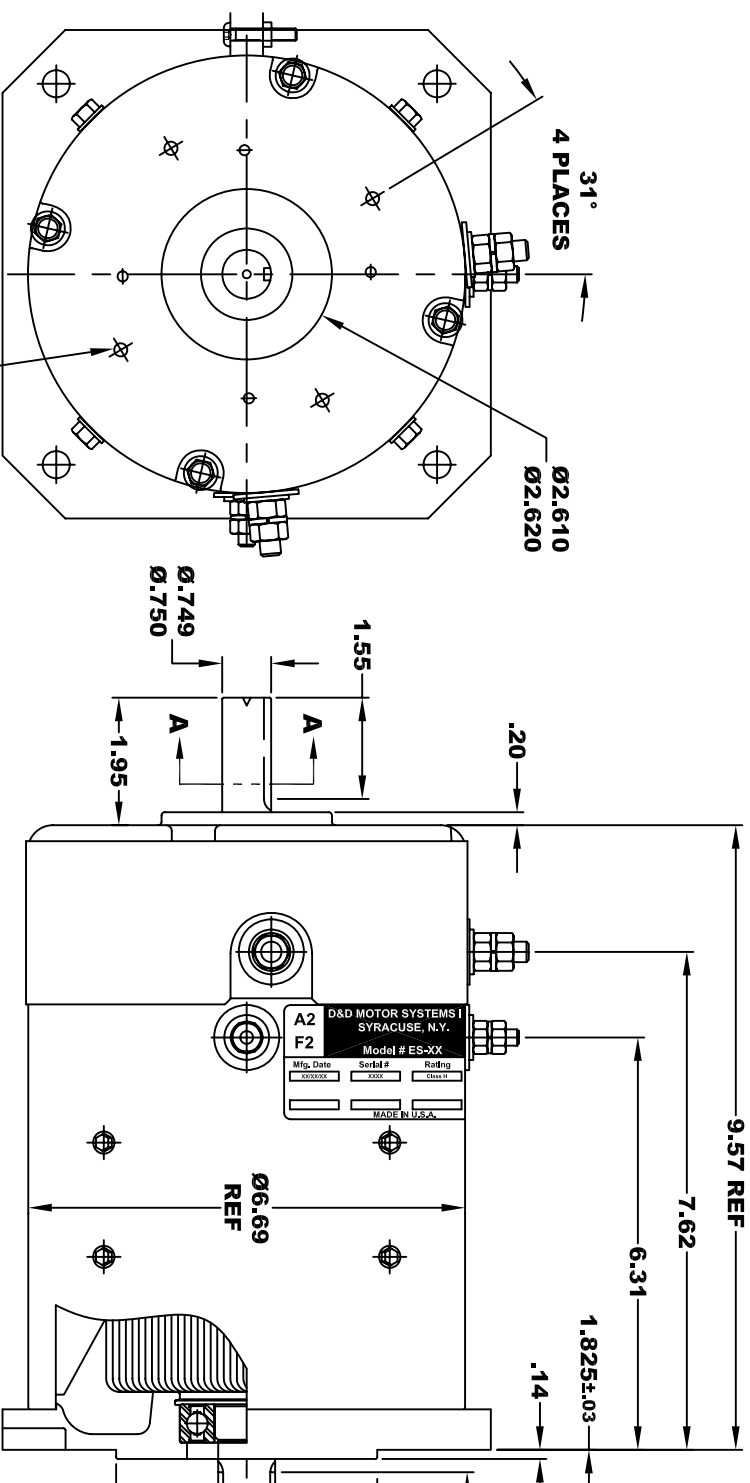


# DRAFT

<b>D&amp;D MOTOR SYSTEMS INC.</b>			
SYRACUSE N.Y.			
<b>A2</b>	<b>F2</b>	<b>Model # ES-XX</b>	<b>A1</b>
Mfg. Date	Serial #	Rating	Voltage
XXXXXX	XXXX	CLASS H	XX
MADE IN U.S.A.			

**TORQUE SPECIFICATION FOR  
POWER CABLE SECURING TOP NUTS**  
5/16-18 UNC (A1 / A2) - 110 IN / LBS MAX  
1/4-20 UNC (F1 / F2) - 50 IN / LBS MAX



**MOTOR WIRING CONNECTIONS:**  
CW ROTATION DRIVE END  
CONNECT A1 & F1 TO ONE BATTERY TERMINAL  
CONNECT A2 & F2 TO OTHER BATTERY TERMINAL  
CCW ROTATION DRIVE END  
SWITCH F1 & F2 CONNECTIONS

EXTERNAL INVOLUTE SPLINE DATA	
STANDARD	ANSI B92.1 - 1996
ROOT TYPE	FLAT
FIT TYPE	SIDE
NUMBER OF TEETH	13
SPLINE PITCH	16 / 32
PRESSURE ANGLE	30°
MAJOR DIAMETER	.8734.001
CIRCULAR TOOTH THICKNESS	
TOLERANCE CLASS FIT	5
MAX EFFECTIVE	0.0982
MIN ACTUAL	0.0956

**MOTOR WEIGHT: XX LBS**  
**CLASS "H" INSULATION**  
**PERFORMANCE SPEC: XX**

THIS PRINT IS THE PROPERTY OF D&D MOTOR SYSTEMS INC.  
DO NOT SCALE  
WORK TO DIMENSIONS  
TOLERANCES UNLESS OTHERWISE SPECIFIED ARE AS FOLLOWS

.XXX \_\_\_\_\_ .005  
.XX \_\_\_\_\_ .01  
.XX ROUGH CASTING \_\_\_\_\_ .03  
HOLES \_\_\_\_\_ -.001 / +.006  
ANGLES \_\_\_\_\_ 0°30"

<b>D &amp; D MOTOR SYSTEMS INC</b>			
<b>MOTOR OUTLINE</b>			
SIZE	DRAWN DATE	RELEASE DATE	DWG NO. / PART NO.
B	12-12-13		AUBURN GEAR
SCALE	STF	DRAWN BY	MJG
			REV DATE