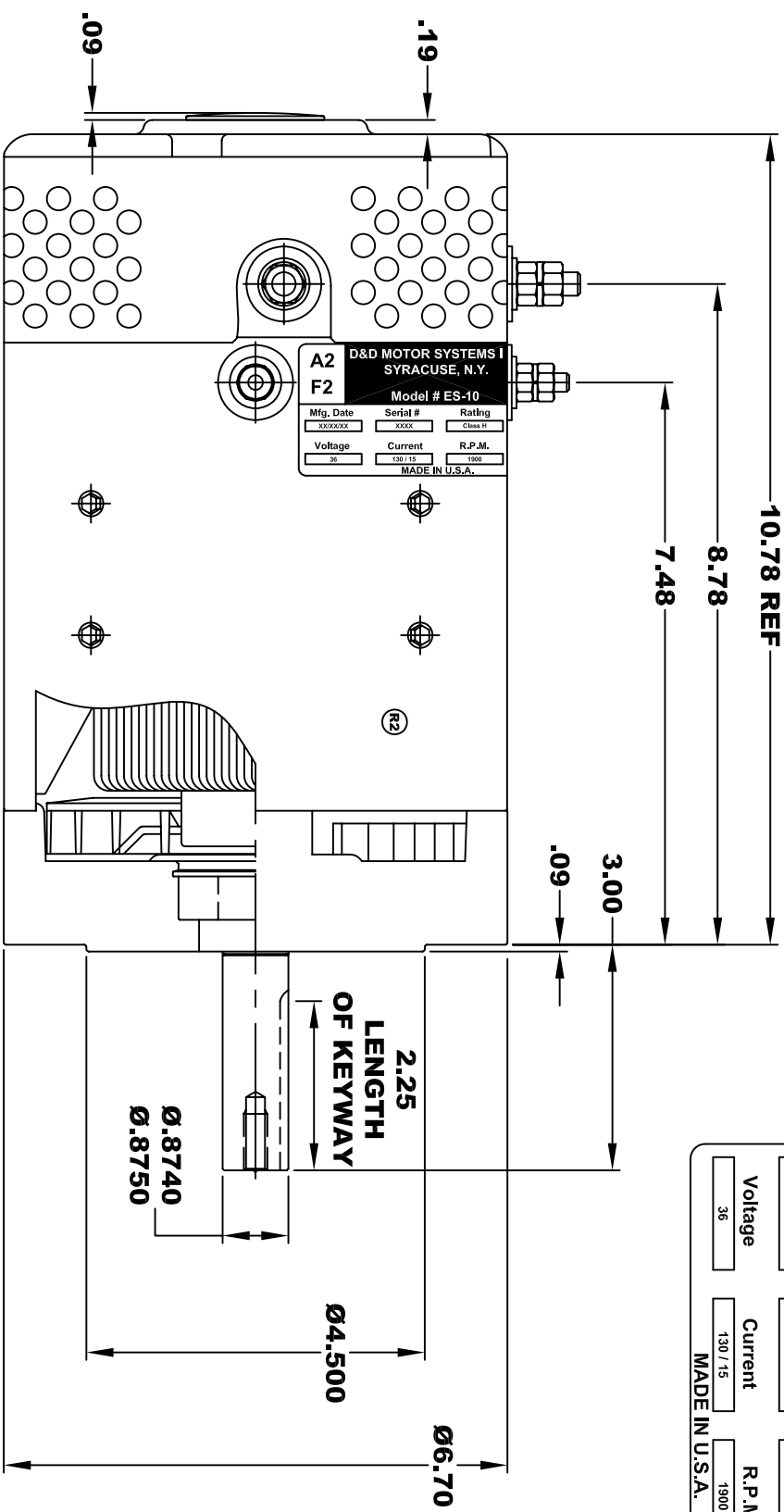
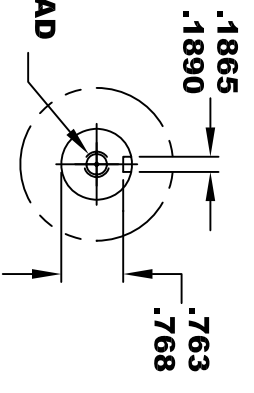


D&D MOTOR SYSTEMS INC.				A1	
SYRACUSE N.Y.				F1	
Model # ES-10					
Mfg. Date	Serial #	Rating	Duty		
XX/XX/XX	XXXX	Class H	S2-60 MIN		
Voltage	Current	R.P.M.	H.P.		
36	130 / 15	1900	5.0		
MADE IN U.S.A.					

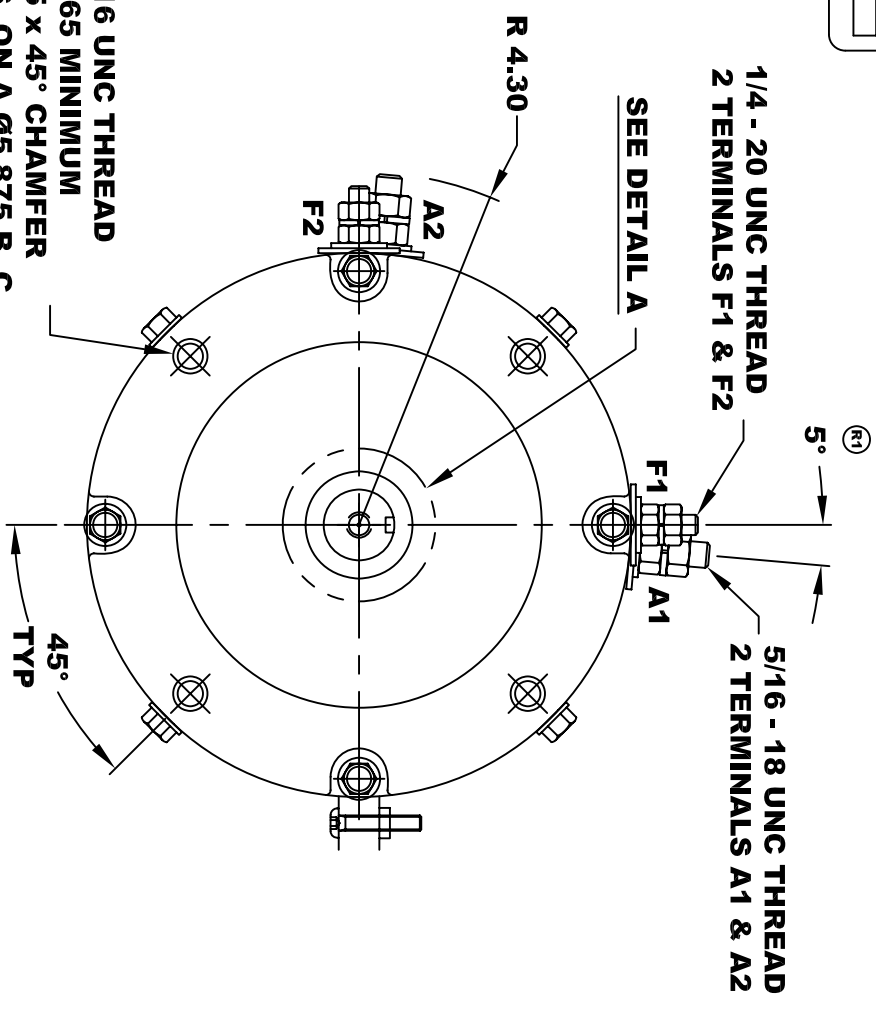


5/16 x 18 UNC THREAD
 ▽ .75

DETAIL A



3/8 - 16 UNC THREAD
 ▽ .65 MINIMUM
 .03 -.05 x 45° CHAMFER
 4 PLACES, ON A Ø5.875 B. C.



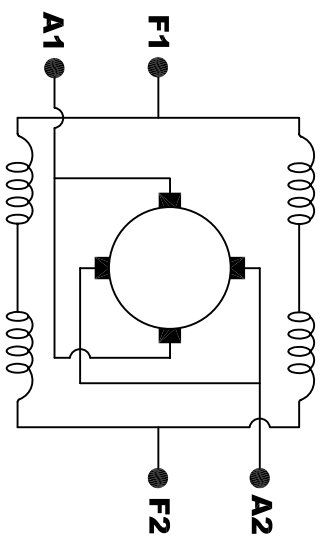
**TORQUE SPECIFICATION FOR
 POWER CABLE SECURING TOP NUTS**
 5/16-18 UNC (A1 / A2) - 110 IN / LBS MAX
 1/4-20 UNC (F1 / F2) - 50 IN / LBS MAX

MOTOR WEIGHT: 50 LBS
CLASS "H" INSULATION
PERFORMANCE SPEC: 5

D & D MOTOR SYSTEMS INC

MOTOR OUTLINE

SIZE	DRAWN DATE	RELEASE DATE	DWG NO. / PART NO.	REV
B	12-26-01		ES-10	R2
SCALE	STF	DRAWN BY	MJG	REV DATE
				5-1-13



ELECTRICAL WIRING DIAGRAM

MOTOR WIRING CONNECTIONS:
CW ROTATION DRIVE END
 CONNECT A1 & F1 TO ONE BATTERY TERMINAL
 CONNECT A2 & F2 TO OTHER BATTERY TERMINAL
CCW ROTATION DRIVE END
 SWITCH F1 & F2 CONNECTIONS

THIS PRINT IS THE PROPERTY OF D&D MOTOR SYSTEMS INC.
 DO NOT SCALE
 WORK TO DIMENSIONS
 TOLERANCES UNLESS OTHERWISE SPECIFIED ARE AS FOLLOWS
 .XX _____ .01
 .XXX _____ .005
 .XX ROUGH CASTING _____ .03
 HOLES _____ -.001 / +.006
 ANGLES _____ 0°30"