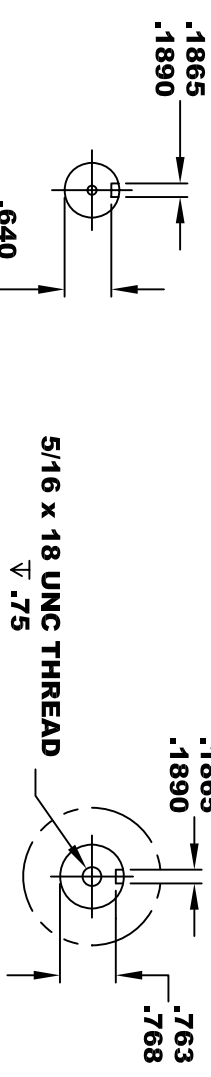
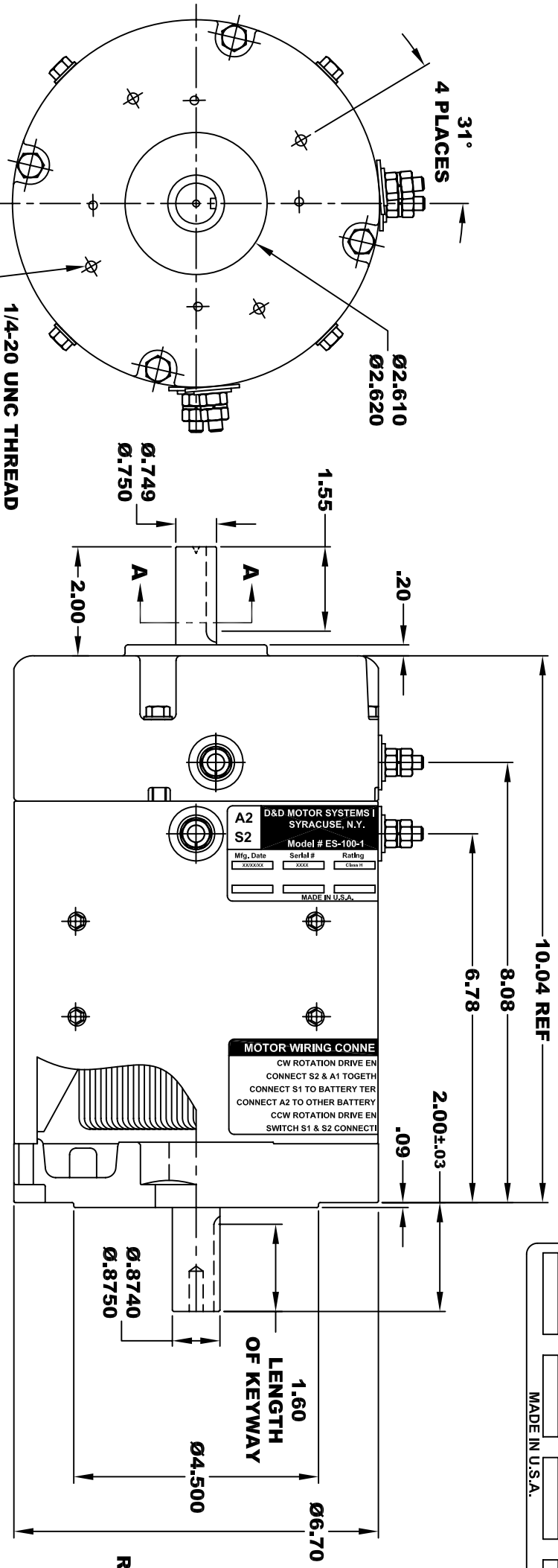
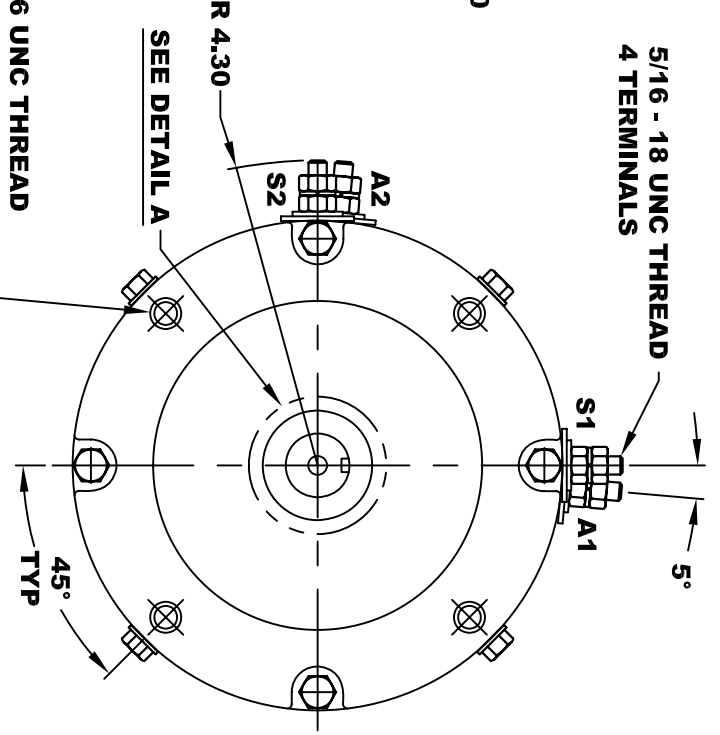


**TORQUE SPECIFICATION FOR  
POWER CABLE SECURING TOP NUTS  
5/16-18 UNC - 110 IN / LBS MAX**

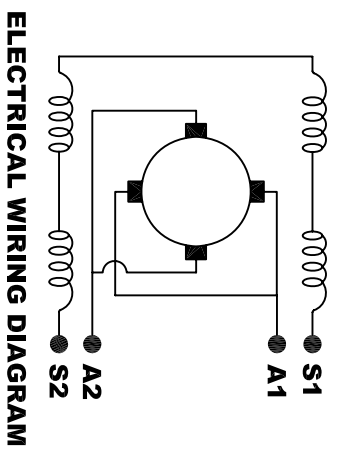
<b>A2</b>		<b>D&amp;D MOTOR SYSTEMS INC.</b>		<b>A1</b>	
<b>S2</b>		SYRACUSE N.Y.		<b>S1</b>	
<b>Model # ES-100-1</b>					
Mfg. Date	Serial #	Rating	Class -H	Voltage	
XXXXXX	XXXX	CLASS -H		XX	
			MADE IN U.S.A.		



**3/8 - 16 UNC THREAD  
.03 - .05 x 45° CHAMFER  
4 PLACES, ON A Ø5.875 B. C.**



**MOTOR WEIGHT: 51 LBS  
CLASS "H" INSULATION  
PERFORMANCE SPEC: 1**



**MOTOR WIRING CONNECTIONS:**  
**CW ROTATION DRIVE END**  
**CONNECT S2 & A1 TOGETHER**  
**CONNECT S1 TO BATTERY TERMINAL**  
**CCW ROTATION DRIVE END**  
**CONNECT A2 TO OTHER BATTERY TERMINAL**  
**SWITCH S1 & S2 CONNECTIONS**

THIS PRINT IS THE PROPERTY OF D&D MOTOR SYSTEMS INC.  
 DO NOT SCALE  
 WORK TO DIMENSIONS  
 TOLERANCES UNLESS OTHERWISE SPECIFIED ARE AS FOLLOWS  
 .XX \_\_\_\_\_ .01  
 .XXX \_\_\_\_\_ .005  
 .XX ROUGH CASTING \_\_\_\_\_ .03  
 HOLES \_\_\_\_\_ -.001 / +.006  
 ANGLES \_\_\_\_\_ 0°30"

<b>D &amp; D MOTOR SYSTEMS INC</b>			
<b>MOTOR OUTLINE</b>			
SIZE	DRAWN DATE	RELEASE DATE	DWG NO. / PART NO.
B	4-12-04		ES-100-1
SCALE	STF	DRAWN BY	REV DATE
		MJG	