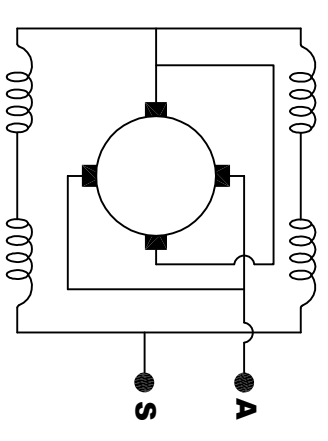
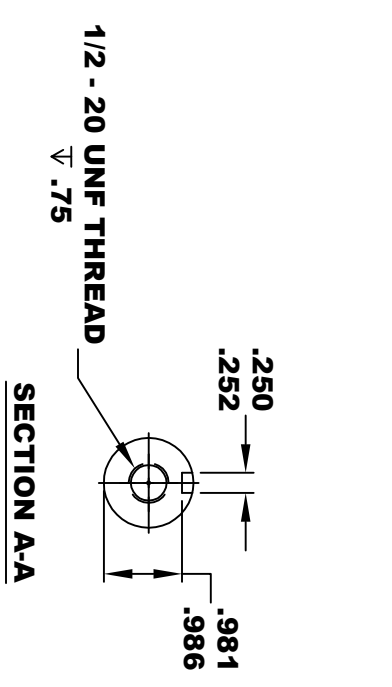
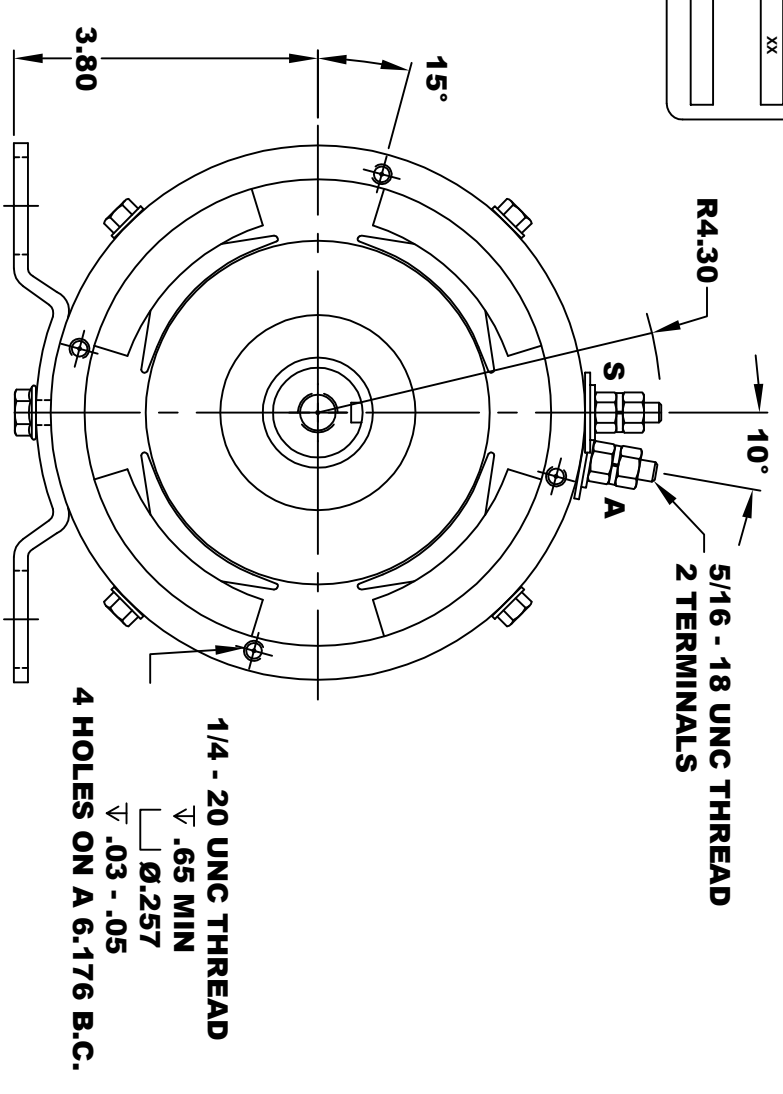
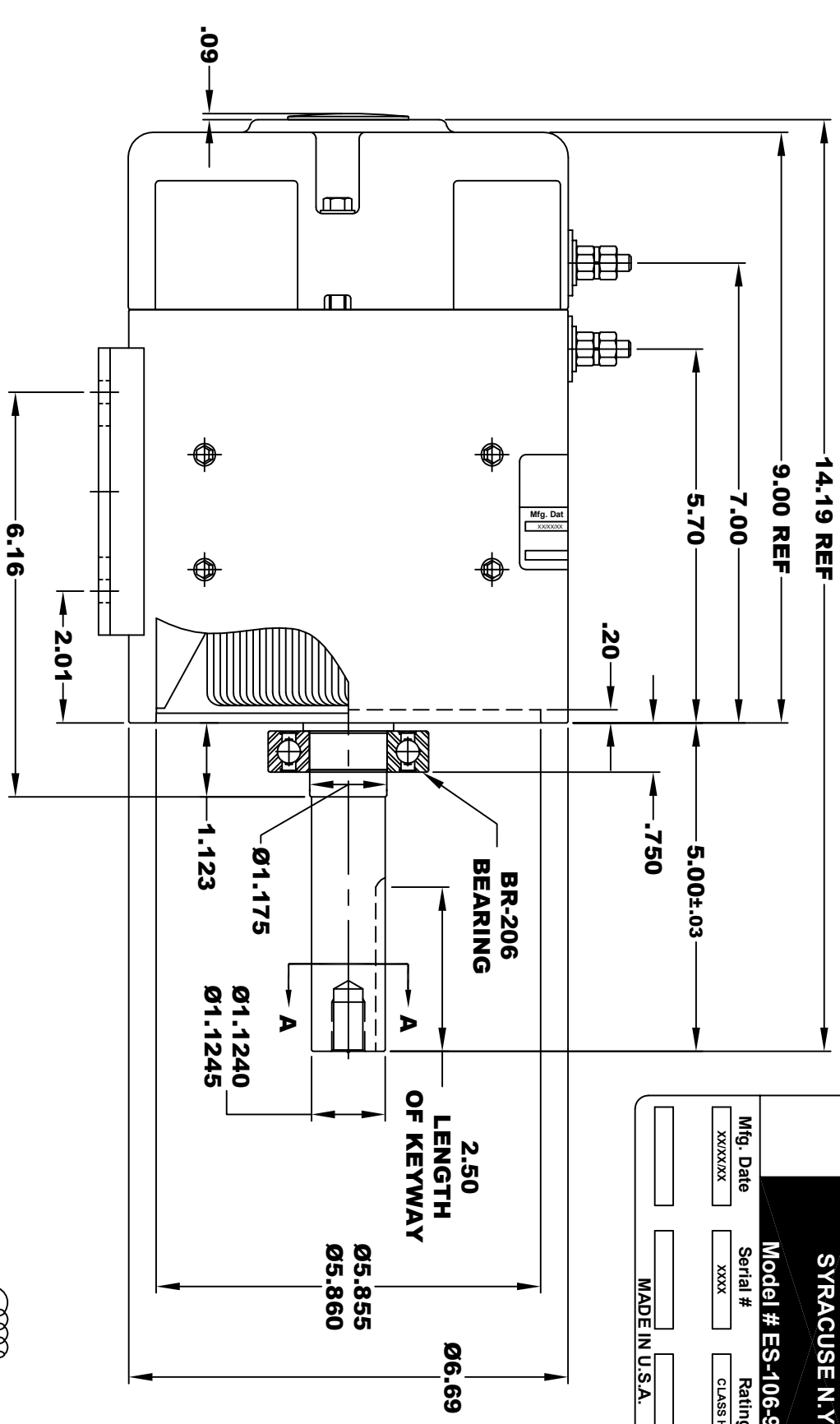


D&D MOTOR SYSTEMS INC.
SYRACUSE N.Y.

Model # ES-106-94

Mfg. Date XXXX/XX	Serial # XXXX	Rating CLASS H	Voltage XX
MADE IN U.S.A.			

**TORQUE SPECIFICATION FOR
 POWER CABLE SECURING TOP NUTS
 5/16-18 UNC - 110 IN / LBS MAX**



ELECTRICAL WIRING DIAGRAM

**MOTOR WIRING CONNECTIONS:
 CGW ROTATION DRIVE END
 CONNECT ONE POWER CABLE TO TERMINAL A
 CONNECT THE OTHER POWER CABLE TO TERMINAL S**

DRAFT

**MOTOR WEIGHT: 49 LBS
 CLASS "H" INSULATION
 PERFORMANCE SPEC: 94**

THIS PRINT IS THE PROPERTY OF D&D MOTOR SYSTEMS INC.
 DO NOT SCALE
 WORK TO DIMENSIONS
 TOLERANCES UNLESS OTHERWISE SPECIFIED ARE AS FOLLOWS
 .XX .01
 .XXX .005
 .XX ROUGH CASTING .03
 HOLES .001 / +.006
 ANGLES 0.30"

D & D MOTOR SYSTEMS INC			
MOTOR OUTLINE			
SIZE	DRAWN DATE	RELEASE DATE	DWG NO. / PART NO.
B	1-10-15		ES-106-94
SCALE	STF	DRAWN BY	REV DATE
		MJG	